

USR-TCP232-E2 User Manual

File Version: V1.1.3



Contents

1. Get Start	5
1.1. Hardware Testing Environment.....	6
1.1.1. Hardware Preparing.....	6
1.1.2. Hardware Connection	7
1.2. Net Testing Environment	8
1.3. Default Parameters Testing	9
1.4. Data Transport Testing	9
2. Overview.....	11
2.1. Brief Introduction	11
2.2. Features.....	12
2.3. Basic Parameters.....	13
3. Hardware Parameters	14
3.1. Pin Definition	14
3.2. Dimension.....	16
4. Product Function	16
4.1. Net basic function.....	17
4.1.1. IP address/subnet masks/gateway.....	17
4.1.2. DNS Address	20
4.1.3. Hardware Restore the Factory Function	20
4.1.4. Web Server	21
4.1.5. Net Firmware Upgrade	22

4.2. Socket	22
4.2.1. TCP Client mode	24
4.2.2. TCP Server Mode	28
4.2.3. UDP Client mode.....	32
4.2.4. UDP Server mode	36
4.2.5. HTTPD client	39
4.2.6. Websocket	41
4.2.7. USR-VCOM.....	44
4.3. Serial Function	45
4.3.1. Serial port Basic Parameters	45
4.3.2. Flow Control	46
4.3.3. Serial Port Mapping	47
4.3.4. Similar RFC2217	48
4.4. Special Function.....	51
4.4.1. Heartbeat Package Function	52
4.4.2. Modbus Gateway.....	53
4.4.3. Registration Package	54
4.4.4. USR-cloud	57
4.4.5. Net Printing.....	60
4.4.6. Customize Webpage	61
4.4.7. Customize MAC.....	62
4.4.8. Restart Timeout	63

4.4.9. Clear Buffer Data.....	64
4.4.10. Short Connection.....	65
5. Parameters Setting	66
5.1. Net Protocol Setting Parameters.....	66
5.1.1. Setup Software Setting Parameters	66
5.1.2. Setting Protocol Setting Parameters	72
5.2. Webpage Setting Parameters	80
5.3. AT Command	86
5.3.1. Net AT Command.....	86
5.3.2. Serial AT Command.....	86
5.3.3. Error AT Command	88
5.3.4. AT Command	89
5.3.5. AT Command Details.....	91
6. Contact us.....	119
7. Disclaimer	120
8. Modified History	120

1. Get Start

USR-TCP232-E2 is a module that can realize data transmission between the Network and TTL serial port, which is equipped with ARM cortex-M4 processor. No need to care of the details, the module realize the protocol converse.parameters can be set in the software and webpage, configure one time and save forever.

This character aimed at get start and the user are advised to operation one time according to the instr to understand USR-TCP232-E2 completely.

Questions occur in the testing, you can refer to our application case and answers:

<https://www.usriot.com/support/faq/ethernet-series/>

Also you can submit the problem into the support: <http://h.usriot.com/>

Product link: <https://www.usriot.com/products/dual-ttl-uart-to-ethernet-module.html>

Related software:

- ✓ M4 setting software: <https://www.usriot.com/support/downloads/usr-m4-setup-software-v234102.html>

(also, it can be used in the industrial serial to Ethernet Converter:USR-N668,USR-N510, USR-N520, USR-N540, USR-TCP232-410S, USR-TCP232-419 and industrial ethernet modules: USR-K7, USR-TCP232-ED2.)

- ✓ Testing software: <https://www.usriot.com/support/downloads/usr-tcp-test-testing-software.html>

Dual TTL UART to Ethernet Module

Model: USR-TCP232-E2

USR-TCP232-E2 is a Dual TTL UART to Ethernet Module, which supports 2*TTL working at the same time.

- Industrial TI M4 Solution
- 2 TTL Serial Ports, 2Kv isolation protection
- Modbus RTU to Modbus TCP

Share to:



General Details

Specifications

Downloads

How to Buy

Models

Diagram 1-1 Download Page

1.1. Hardware Testing Environment

1.1.1. Hardware Preparing

- USR-TCP232-E2*1
- USR-Kx-EVK*1
- Cable*1
- PC *1
- Power adapter (DC5V 1A)*1

- Serial port cable *1



Diagram 1.1.1-1 hardware prepare tools

1. Testing purpose:

- Have a complete understand for USR-TCP232-E2
- Testing the function.

2. Data direction

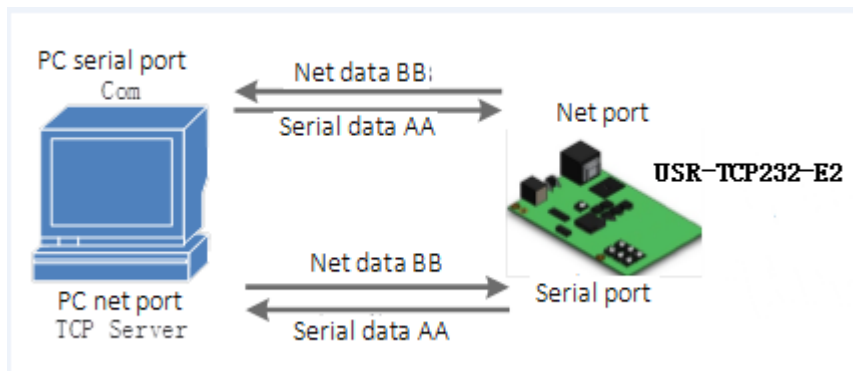


Diagram 1.1.1-2 Data Direction

1.1.2. Hardware Connection

To test the communication converse from serial port to net, connect the USR-TCP232-E2 with evaluation board, and connected with the PC using serial cable, then connect the net port of USR-TCP232-E2 and PC. Power on the it. The diagram is as fellow:



Diagram 1.1.2-1 Hardware Connection

Note: the power adapter and cable are from USR.

1.2. Net Testing Environment

To prevent from searching nothing, not ping and not opening the webpage, you should testing the below contents before using.

1) Shut down firewall and antivirus software.

2) Shut down net card none-related and reserve only one local connection.

3) For the direct connection between PC and server, please provide a static IP in the same LAN with the IP of USR-TCP232-E2, e.g.192.168.0.201

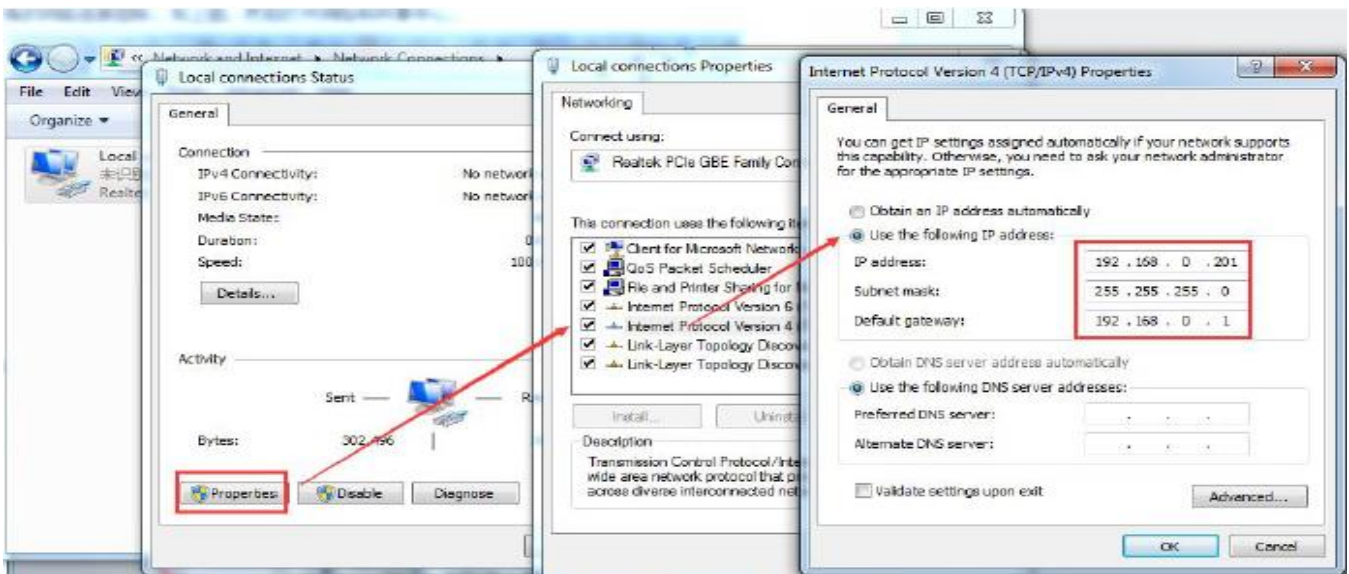


Diagram 1.2-1 Local Connection of the PC

1.3. Default Parameters Testing

Item	Content
Username	admin
Password	admin
IP address of USR-TCP232-E2	192.168.0.7
Subnet masks of USR-TCP232-E2	255.255.255.0
Default gateway of the E2	192.168.0.1
Default mode of the port1 the E2	TCP Server
Default local port of the port1 E2	23
Serial port baud rate	115200
Serial port parameters	None/8/1

Form 1.3-1 Default parameters

1.4. Data Transport Testing

After the above steps, the USR-TCP232-E2 can realize the bi-direction between the serial port and ethernet, operation steps are as follows:

1) Open the “USR-TCP232-Test.exe” connecting the hardware as **Diagram 1.1.2-1** .

2) Net setting change into TCP Client, enter the 192.168.0.7 into IP address, server port is 23. then click to build TCP connection. serial baud rate:115200, Serial port parameters: none/8/1 then open the serial port.

From now, we can have the data transmit testing from the serial port to network.

Direction from serial port to network:

PC serial port → USR-TCP232-E2 serial port → USR-TCP232-E2 network → PC network data

Direction from network to serial port:

PC network data → network → USR-TCP232-E2 serial port → PC serial port

As the below:

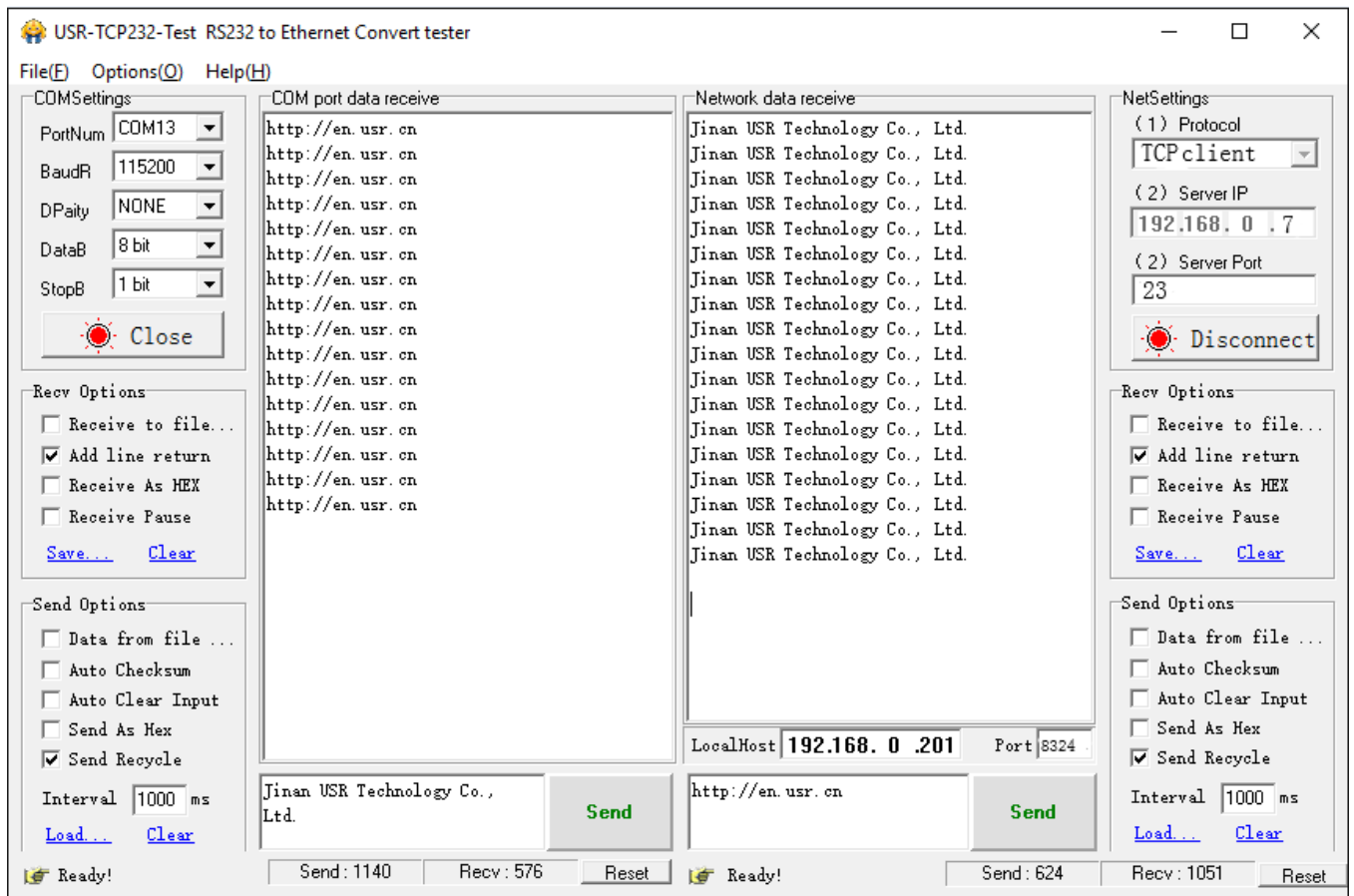


Diagram 1.4-1 Default Parameters Testing

2. Overview

2.1. Brief Introduction

Multifunction serial to Ethernet module USR-TCP232-E2, which supports two TTL serial ports, can realize data transmission between the network and TTL serial port. This module is equipped with ARM cortex-M4 processor, which has the advantages of low power consumption, fast speed and high stability.

10/100M ethernet interface, serial communication baud rate can reach at 1024Kbps, USR-TCP232-E2 supports several work mode such as: TCP Server, TCP Client, UDP, Httpd Client and WEB to Serial(Websocket), can be figured in the webpage or the upset software. The internal integration of TCP/IP protocol stack, user can use it to complete the embedded device networking function easily, saving the development process of human, material and development cycle, so that products can be faster into the market, enhance competitiveness.

Passed the strict testing, USR-TCP232-E2 has successful case in Banks, highways, large corporate networks, busy webcam networks and complex network environments such as fiber-optic to Ethernet.

2.2. Features

- Equipped with ARM cortex-M4, industrial width of temperature,TCP/IP protocol stack, more stable and reliable.
- 10/100Mbps net port, supports Auto-MDI/MDIX
- Supports TCP server, TCP client, UDP server, UDP client and HTTPD client work mode
- Build-in webpage where can set the parameters, also can customize webpage. The port of the webpage can be defined
- Supports two TTL serial ports, can work in same time independently
- Supports RTS/CTS hardware flow control and Xon/Xoff software flow control
- Supports USR-VCOM
- Baud rate:600bps~1Mbps; and five parity way:none, odd, even, mark, space
- Supports modbus gateway
- Supports Reload button, hardware restore to factory setting
- RJ45 have Link/Data indicator, in the net port, there is Isolating transformer,1.5KB ESD
- The unique MAC in the world(begin with D8-B0-4C), and the user can self-defined
- Supports net upgrade firmware,DDNS, DHCP
- Supports static IP and DHCP, query the device in LAN with UDP
- Supports keepalive, check dead connection and abnormal and reconnection
- Supports password and username, more safety
- Supports two websockets to realize the bi-direction transparent transmission between serial port and webpage.
- Supports hardware watch dog, never crash

2.3. Basic Parameters

Parameter	Value
Hardware parameters	
Input Voltage	VCC: 3.0~3.6V(3.3V is best) VDD: 5.0~7.0V(5.0V is best)
Working Current	120mA@3.3V / 120mA5.0V
Net port	RJ45, 10/100Mbps
Encapsulation way	Pin
Serial port	600~1M(bps)
Software parameters	
Network protocol	IP, IPV4, TCP, UDP, DHCP, DNS, HTTP, ARP, ICMP, Web socket
Access way to IP	Static IP, DHCP
DDNS	Support
User parameters	Software setting, webpage setting, AT command
Single transparent transmission	TCP Server/TCP client/UDP Server/UDP Client
Modbus	Supports modbus gateway
Webpage to serial port	Websocket
Similar RFC2217	Support
Httpd client	support

Self-defined webpage	support
TCP server connection	Maximum 8
Net buffer	Send:16Kbyte; receive:16Kbyte
Serial port buffer	Send:2K byte;receive: 2kbyte
Average transport delay	<10ms
Set software	USR-VCOM, USR-Cloud, parameters setting software
others	
Certification	CE,FCC, ROHS
Protection	15KV electromagnetic isolation
Size	50.0x30.0x23.2 mm (L*W*H)
Operating Temp.	-40~+85°C
Storage temp	-40~+105°C
operating humidity	5%~95% RH
Storage humidity	5%~95% RH
Accessory	None
Package	Electrostatic bubble

3. Hardware Parameters

3.1. Pin Definition

NO.	Name	Instr	I/O	Voltage range
-----	------	-------	-----	---------------

1	VDD	5.0V power supply	P	5.0-7.0V
2	VCC	3.3V power supply	P	3.0-3.6V
3	GND	Ground(including power ground and signal ground	P	-
4	RST	RST pin is the module restore pin, please reach the IO of the MCU. Restore after this pin received 200ms low power when it occurs abnormal things. Power on and restore, its the normal operating for the module.	I	3.0-3.6V
5	TXD0	Serial port 1 sent pin.	O	3.0-3.6V
6	RXD0	Serial port 2 received pin	I	3.0-3.6V
7	Reload	Have this pin hang or connect to the high power. When low power, module can be configured via serial port. When you configure the module, please power on and then put down reload pin to enter the serial configure status. When used to restore to factory setting, no data filling in the serial. Please refer to the 4.1.3	I	3.0-3.6V
8	Work	Module work signal(blink 1s/time)	O	3.0-3.6V
9	CTS0	Flow control pin, allow to send pin	I	3.0-3.6V
10	RTS(485_EN)	Flow control pin, require to send pin(RS485 receive and send control)	O	3.0-3.6V
11	RXD1	Serial 1 received	I	3.0-3.6V
12	TXD1	Serial 1 sent	O	3.0-3.6V

Form 3.1-1 Pin Definition

Note:

P power pin

I input pin

O output

I/O bi-direction data transmission pin

3.2. Dimension

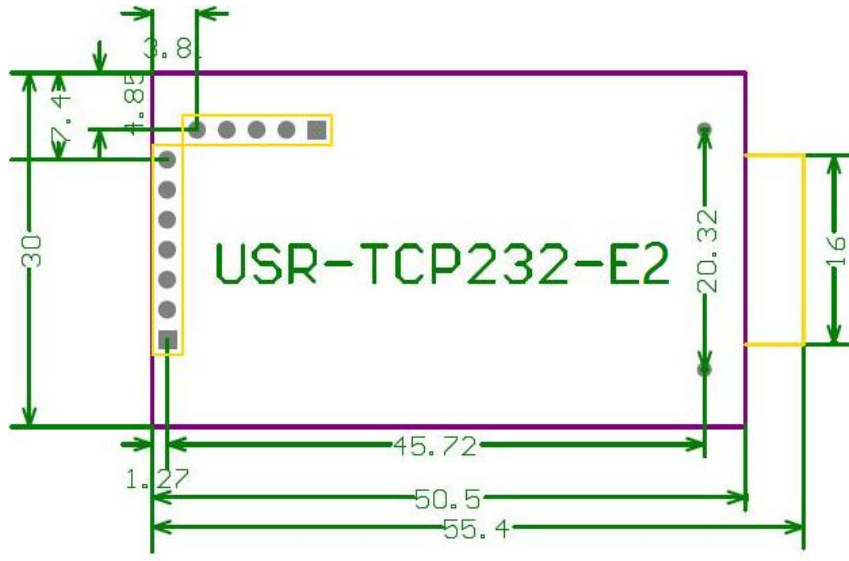


Diagram 3.2-1 Dimension

Note: detailed PCB files download from office webpage: <http://www.usr.cn/Download/52.html>

4. Product Function

This character instruct all the function of the USR-TCP232-E2, below is the details.

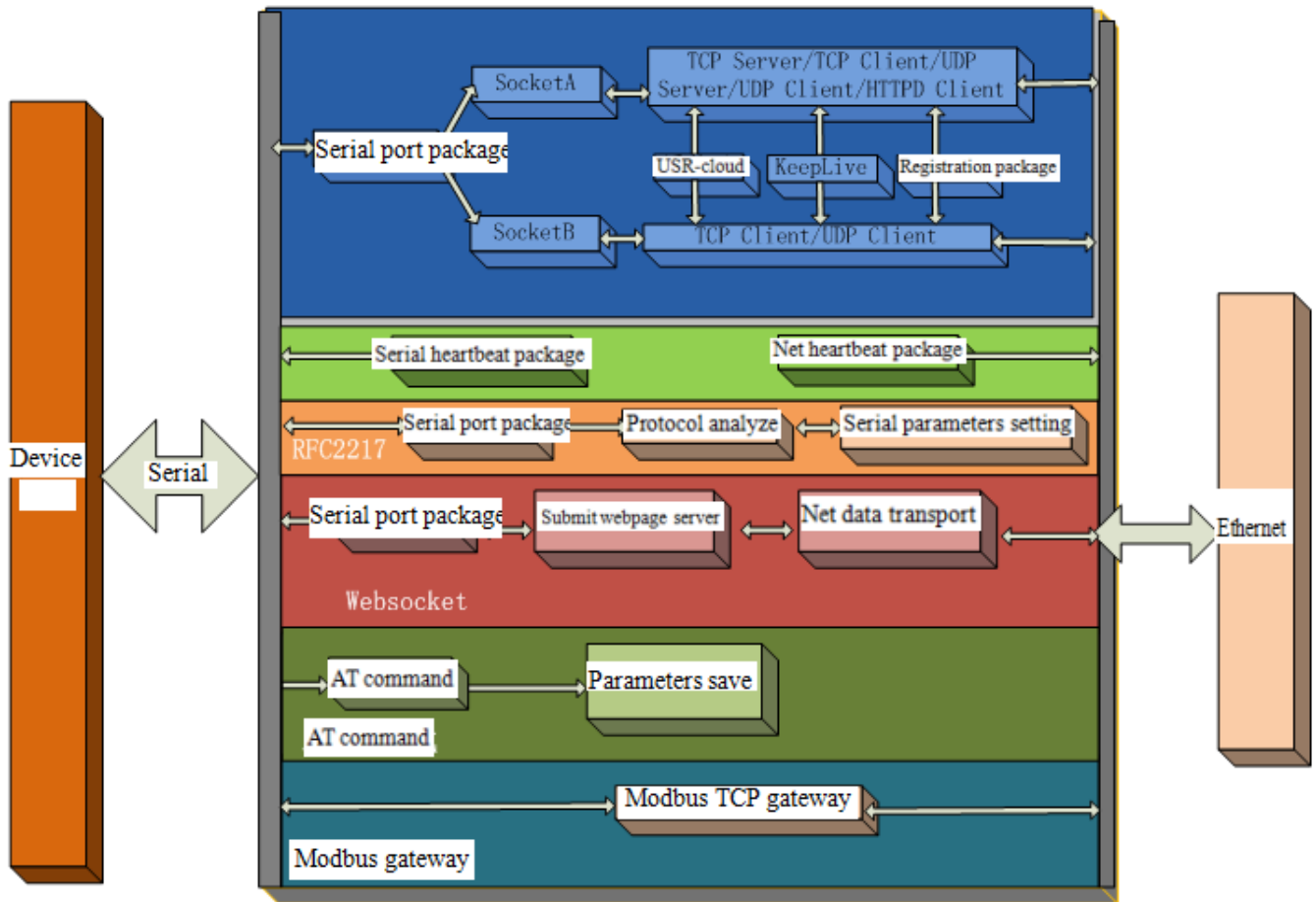


Diagram 4-1 USR-TCP232-E2 Function

4.1. Net basic function

4.1.1. IP address/subnet masks/gateway

1. IP address is the identity representation of the module in the LAN, which is unique in the LAN, so please be sure there is no another device same as it in the LAN.

- Static IP

Handle to setting. Note fill the IP, subnet masks and gateway.

Static IP adopted to the environment that required to statistics the IP and the device and makes them correspond

one to one.

Advantage: accessing the device that can not distribute IP address can be searched via UDP broadcast.

Disadvantage: different net segment in the different LAN can not communicate normally.

- DHCP

Get IP address , gateway address, DNS server and other information from the gateway server to easy the step for setting IP address, DHCP adopted to the environment that have no special requirement to IP.

Advantage: accessing the device equipment with the DHCP server such as router can communicate directly. Reduce the hassle of setting IP address and subnet masks.

Disadvantage: accessing the device with no DHCP server such as computer directly, USR-TCP232-E2 can not work.

2. Subnet masks is a 32 address, used to determine the host number and the network number by shielding some IP address, indicates the number of subnet and determine the flag within the subnet. Using combine with the IP address. The subnet masks needed to set, usually we use the subnet masks: 255.255.255.0. The number of IP addresses in the subnet is 2 to the eighth power minus 2, that is, $2^8-2=254$, and the general host addresses are all 0 or 1 (binary) has its special role.

3. Gateway is the net port of the LAN. If you connect the router to access the internet, the gateway is the router IP address, setting wrong and can not access into the net. No device such as router and no setting, keep the default.

4. Related AT command.

Name	Instr
AT+WANN	Setting and query the access way,IP, subnet masks and gateway parameters for USR-TCP232-E2

Form 4.1.1-1 Related AT Command

5.Setup software

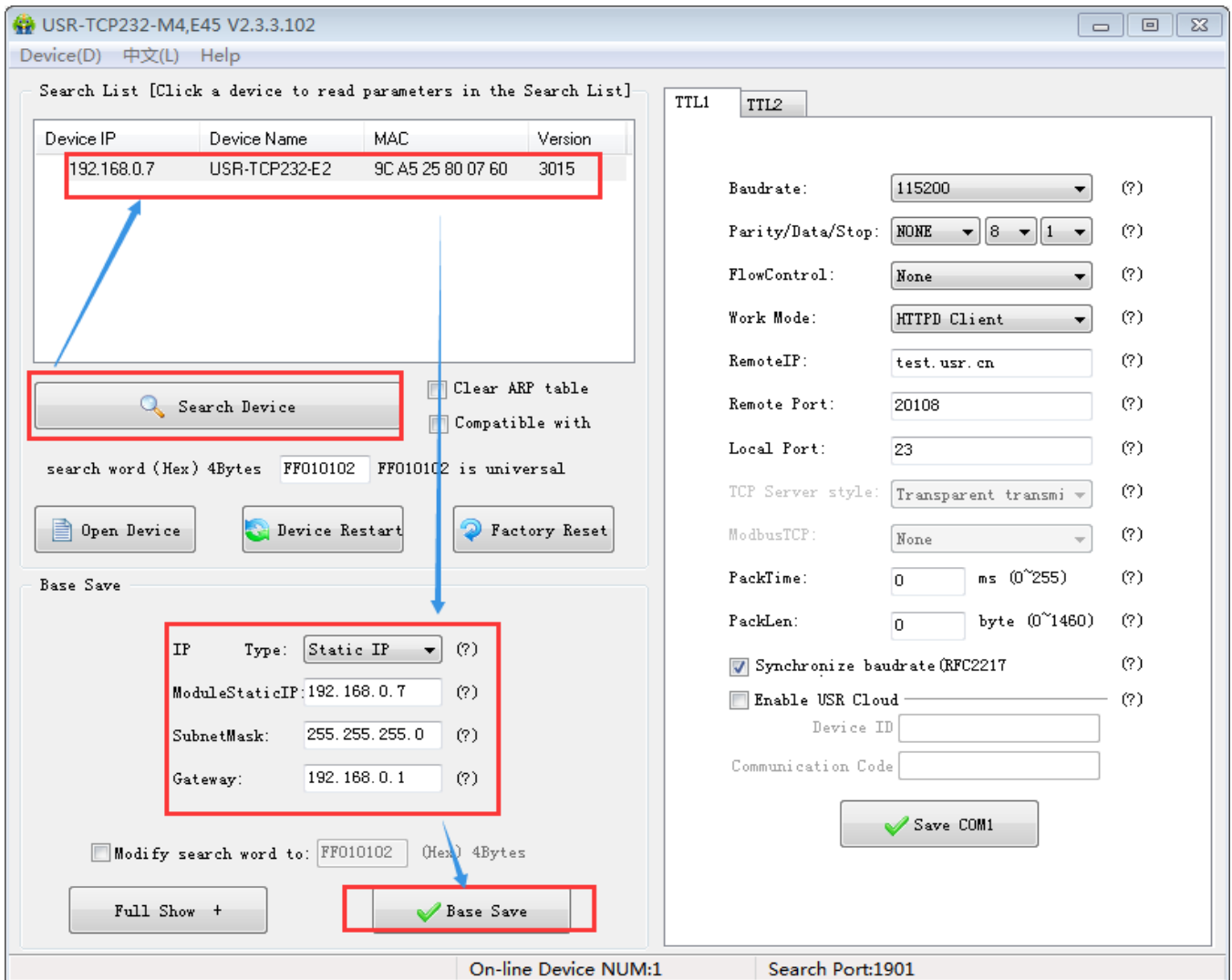


Diagram4.1.1-1 Setup Software

4.1.2. DNS Address

Current Status	parameter
Local IP Config	IP Type: <input type="text" value="Static IP"/>
TTL1	Static IP: <input type="text" value="192"/> . <input type="text" value="168"/> . <input type="text" value="0"/> . <input type="text" value="7"/>
TTL2	Submask: <input type="text" value="255"/> . <input type="text" value="255"/> . <input type="text" value="255"/> . <input type="text" value="0"/>
Web to Serial	Gateway: <input type="text" value="192"/> . <input type="text" value="168"/> . <input type="text" value="0"/> . <input type="text" value="1"/>
Misc Config	Dns Server: <input type="text" value="208"/> . <input type="text" value="67"/> . <input type="text" value="222"/> . <input type="text" value="222"/>
Reboot	<input type="button" value="Save"/> <input type="button" value="Cancel"/>

Diagram 4.1.2-1 DNS Server

DNS address of the USR-TCP232-E2 can be set. When USR-TCP232-E2 need DNS, it will quest for the address that you set.(3013 and above version support self-define DNS address.)

The default DNS server address is the gateway. In DHCP, default DNS address is acquired automatically.

DNS address can be set, which means that if the domain name server are imperfect, user also can realize the domain name analyze referred to AT command.

Name	Instr
AT+DNS	Setting and query the DNS address server.

form 4.1.2-1 DNS AT Command

4.1.3. Hardware Restore the Factory Function

Module supports hardware restore factory function.

Powered off and put down the reload. Then power on and keep the reload down for 5s. After put up, restore to factory setting successfully.

Steps:

Put down the reload →power on →reload keep for 5s→ put up

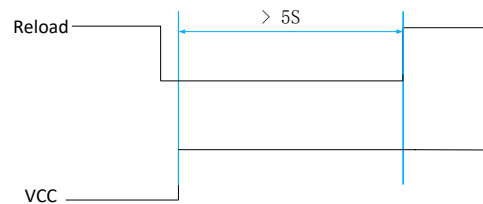


Diagram 4.1.3-1 Restore to Factory Setting Step

When there are wronged parameters or forget the password, you can use hardware restore.

Name	Instr
AT+RELD	Restore to factory setting

Form 4.1.3-1 Hardware Restore Factory AT Command

4.1.4. Web Server

The build-in webpage of the USR-TCP232-E2 same as the common webpage. User can check the related status of the module via webpage. Default port of the web server:80(can be modify, after modify, you can access the webpage via other port.

Check the running status of the USR-TCP232-E2

- 1) Running time: determine the running time and whether restart.
- 2) TX count(eth): determine how many data USR-TCP232-E2 send to internet.
- 3) RX count(eth): determine how many data send to module from net
- 4) Conn status(eth)A: connection status of the A to determine which status that USR-TCP232-E2 stay.

Connection status: IDLE, LISTEN, CONNECTING, CONNECTED, ERROR

IDLE: initial status, no connection and no listening. e.g. waiting connection of the short connection or original status.

LISTEN: under TCP server mode, listening and wait being connected.

CONNECTING: under TCP client, USR-TCP232-E2 building the connection to TCP server

CONNECTED: have built

CONNECTED(n):under TCP server, the number of the client connected.

ERROR: USR-TCP232-E2 stayed in abnormal disconnection.

5) Conn status (ETH)B:connection status of socket B

Current Status	parameter
Local IP Config	Module Name: USR-TCP232-E2
TTL1	Firmware Revision: 3015
TTL2	Current IP Address: 172.16.11.75
Web to Serial	MAC Address: 9c-a5-25-80-07-60
Misc Config	Run Time: 0day: 0hour: 1min
Reboot	TX Count(ETH) : 0/0/0 bytes
	RX Count(ETH) : 0/0/0 bytes
	Conn Status(ETH)A: ERROR/LISTEN/LISTEN
	Conn Status(ETH)B: IDLE/IDLE/IDLE

Diagram4.1.4-1 Running Status

4.1.5. Net Firmware Upgrade

Net upgrade firmware is stable and easy. New function can be enjoyed in the last firmware to meet the high requirement. Ask for new firmware from supply or from the USR support: <http://h.usriot.com>, details please refer to 5.1.1 firmware upgrade.

4.2. Socket

There are five work modes for USR-TCP232-E2: TCP server, TCP client, UDP server, UDP client and HTTPD client. Setting from the setup software or the webpage.

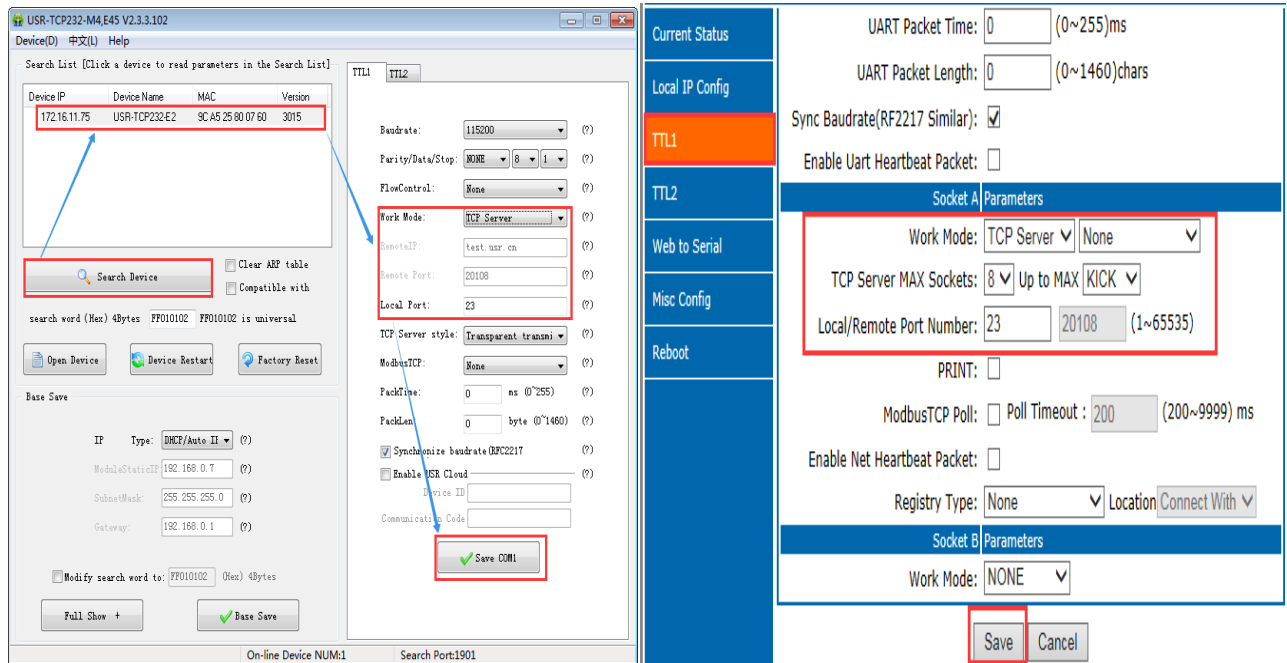


Diagram 4.2-1 Work Mode

Name	Instr
AT+SOCKA1	Setting the protocol/ remote IP/remote port of USR-TCP232-E2 SOCKA
AT+SOCKB1	Setting the protocol/ remote IP/ remote port of USR-TCP232-E2 SOCKB

Form 4.2-1 Work Mode AT Command

4.2.1. TCP Client mode

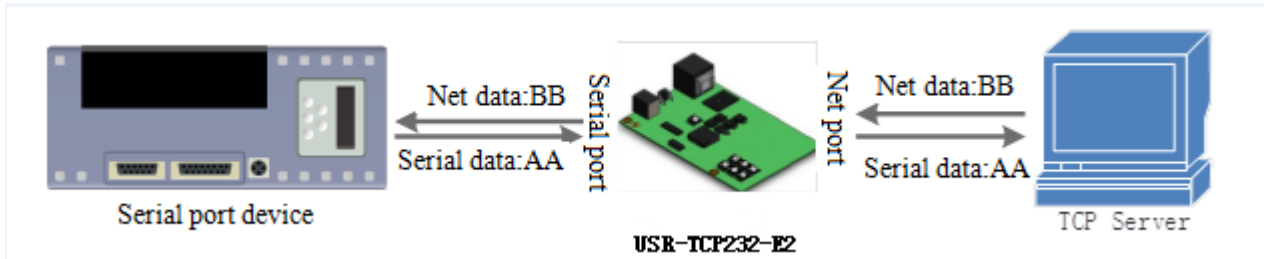


Diagram 4.2.1-1 TCP Client Mode

1. TCP client provides client connection for TCP net server. Build connection automatically and connect to server to realize the data transmit between serial port and server port. According to related rule of TCP, TCP client has difference between connecting and disconnecting, to confirm the data transport reliable. Usually used in the data interaction between device and server, which is the commonest communication way.

2. Under TCP client mode, USR-TCP232-E2 supports recognize the abnormal connection automatically. About 15s interval to send Keep Alive to keep active after build. If there is abnormal disconnection, USR-TCP232-E2 will find it and reconnection. USR-TCP232-E2 connects the server as a TCP, remote port is 0, connecting with random port every time.

3. connecting the remote IP automatically, but do not receive any other connecting quest.

4. Supporting the similar RFC2217, USR-cloud and modbus TCP. In LAN, if the USR-TCP232-E2 is static IP, please be sure that set the IP of USR-TCP232-E2 in the same LAN and set gateway correctly, or USR-TCP232-E2 is can not communication.

5. **Note:** keep alive, similar RFC2217, USR-cloud and modbus TCP are instructed in the bellow.

6. TCP client communication case:

① USR-TCP232-E2 work in TCP client mode, remote IP:172.16.11.8, remote port:8234, click to save then search the USR-TCP232-E2 again and check the parameters.

Also you can set in the webpage, remote IP and port are as above, then save and restart.

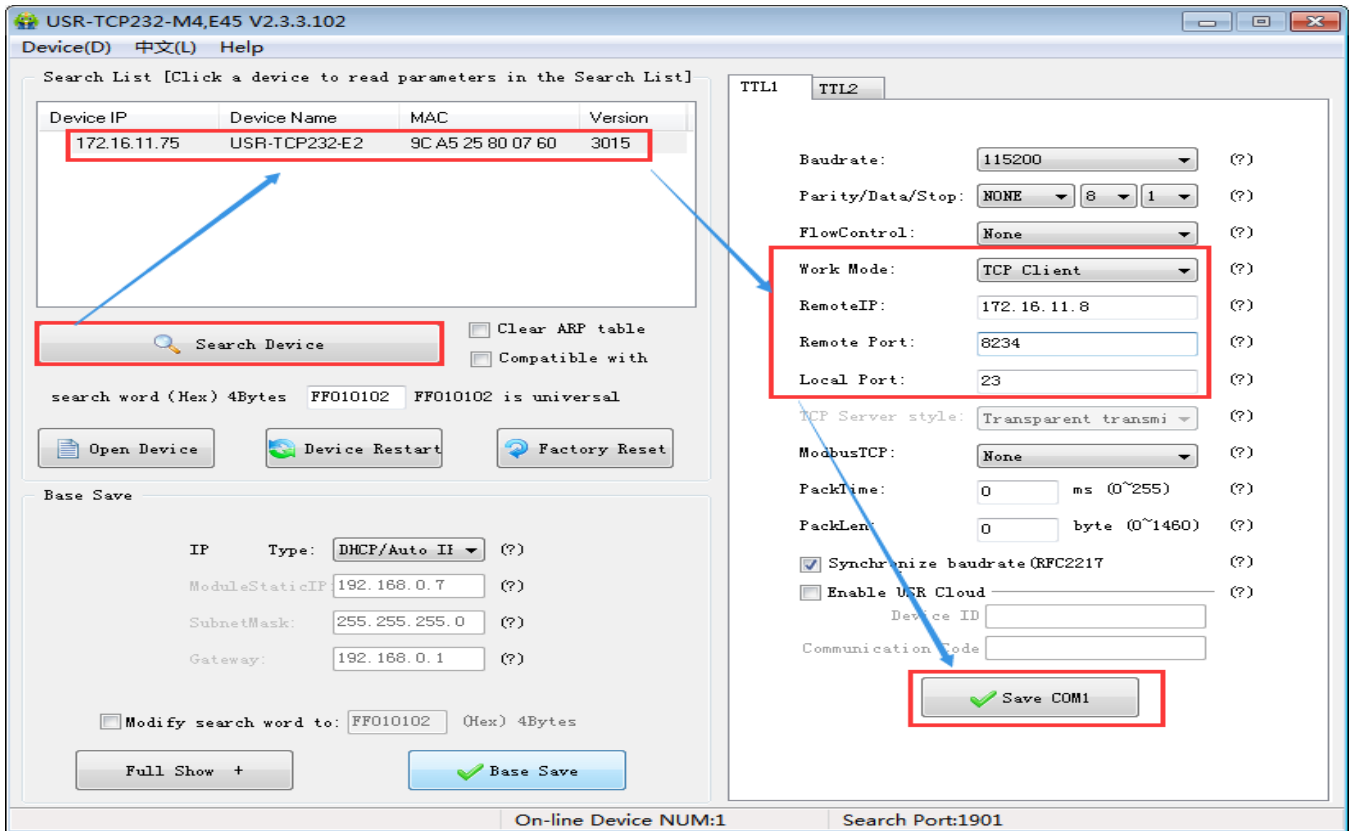


Diagram 4.2.1-2 TCP Client Setup Software Setting

Current Status	Parity: <input type="text" value="None"/>
Local IP Config	Stop Bits: <input type="text" value="1"/> bit
TTL1	Flow Mode: <input type="text" value="NONE"/>
TTL2	1 UART Packet Time: <input type="text" value="0"/> (0~255)ms
Web to Serial	UART Packet Length: <input type="text" value="0"/> (0~1460)chars
Misc Config	Sync Baudrate(RF2217 Similar): <input checked="" type="checkbox"/>
Reboot	Enable Uart Heartbeat Packet: <input type="checkbox"/>
	Socket A Parameters
	2 Work Mode: <input type="text" value="TCP Client"/> <input type="text" value="None"/>
	3 Remote Server Addr: <input type="text" value="172.16.11.8"/> [<input]<="" td="" type="text" value="172.16.11.8"/>
	4 Local/Remote Port Number: <input type="text" value="23"/> <input type="text" value="8234"/> (1~65535)
	Timeout Reconnection : <input type="text" value="86400"/> (1~99999)s
	PRINT: <input type="checkbox"/>
	ModbusTCP Poll: <input type="checkbox"/> Poll Timeout : <input type="text" value="200"/> (200~9999) ms
	Enable Net Heartbeat Packet: <input type="checkbox"/>
	Registry Type: <input type="text" value="None"/> Location <input type="text" value="Connect With"/>
	Socket B Parameters
	Work Mode: <input type="text" value="NONE"/>
	5 <input type="button" value="Save"/> <input type="button" value="Cancel"/>

Diagram 4.2.1-3 TCP Client Webpage Setting

② connecting the TCP server, the IP of my computer:172.16.11.8, local host port:8234(can be modify), testing software show the connection information:172.16.11.68:24(if the local port of USR-TCP232-E2 is 0, here will distribute a port randomly for USR-TCP232-E2, e.g.172.16.11.68:49155).

③ setting the correct serial port parameters, click the serial port and the sent, receive the bi-direction data transmission.

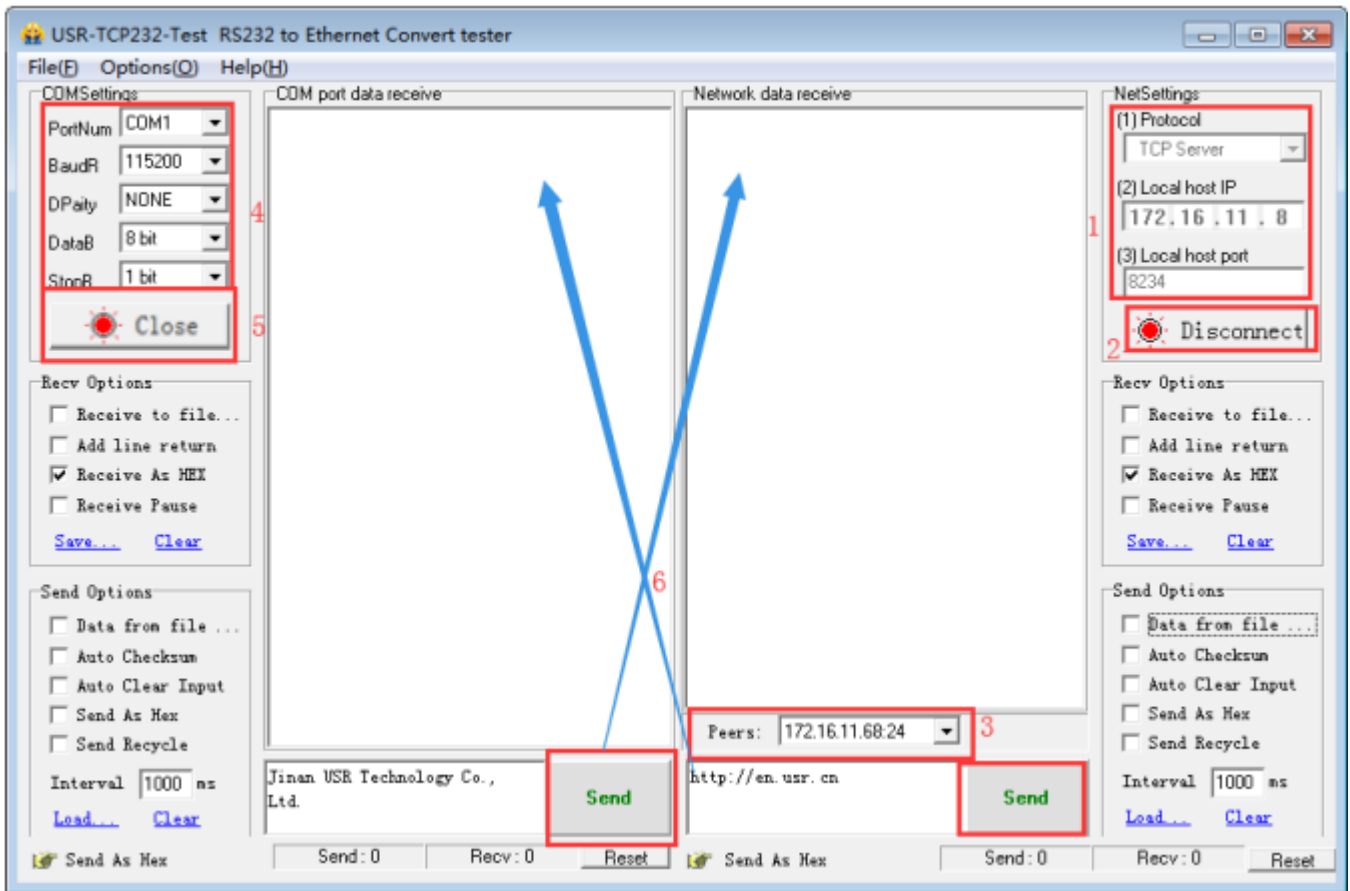


Diagram 1.4-1 TCP Connection Testing

4.2.2. TCP Server Mode

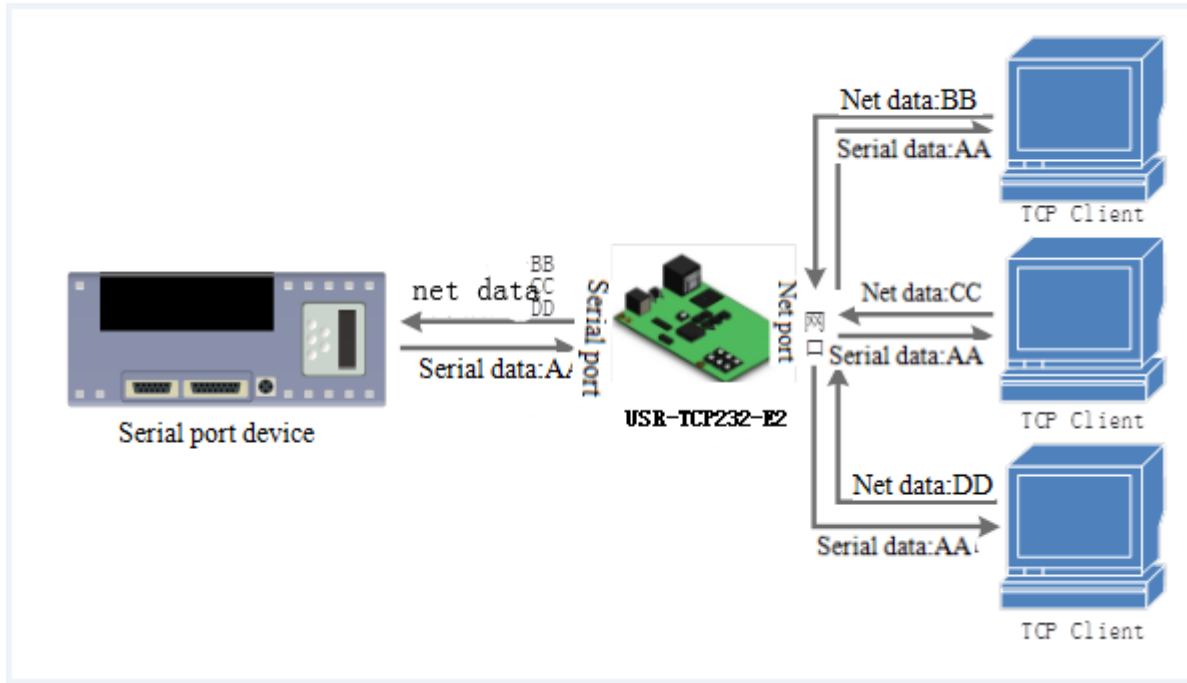


Diagram 4.2.2-1 TCP Server Mode

1. Under TCP server mode ,module monitoring the local port, receive and build connection when there is connecting quest, receive the data and sent all to the client connected. If access the TCP server of USR-TCP232-E2 across the public net, user should build termination mapping on the router.(mapping way: <http://www.usr.cn/Download/155.html>) also TCP server supports Keepalive to monitoring connection timely.
2. Used in communicating with the TCP client in LAN. Adopt to the situation where is no server and several PC and phone sending quest. And same as TCP client , TCP server has different between connecting and disconnecting to confirm data transport stable.
3. TCP server supports similar RFC2217 and modbus TCP
4. At most USR-TCP232-E2 can receive 8 client to connect when work as TCP server. The max number of the client can be connected can be set.
5. Under TCP server,USR-TCP232-E2 listens the local port and do not monitoring, if the questing number more than max number you set, kick off the oldest one.

6. communication case:

USR-TCP232-E2 work in CP server mode, local port 23. Open the testing software and have the mode to be TCP client, writing the remote IP and remote local port, the click connection and testing data transporting.

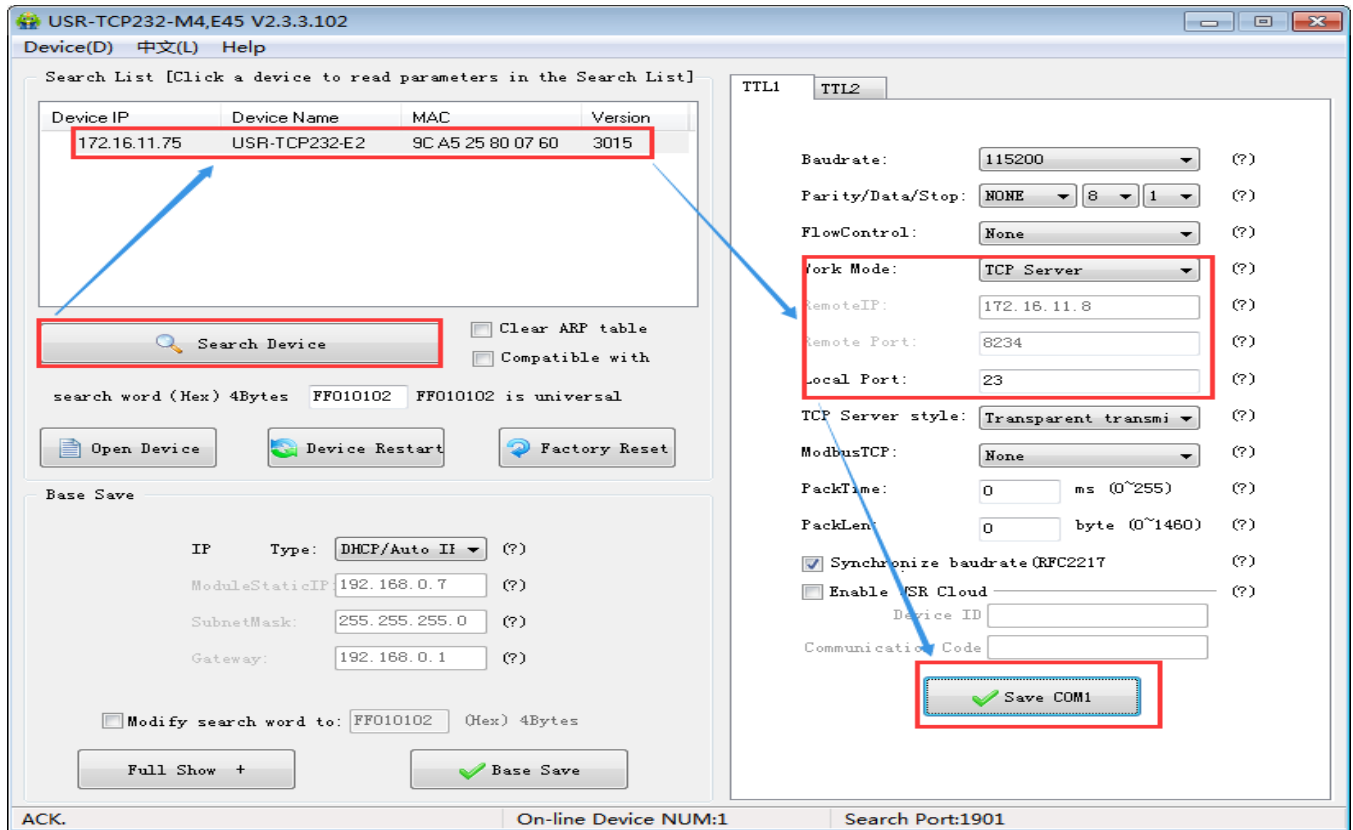


Diagram 4.2.2-2 TCP Server Setup Setting

Current Status	Parity: <input type="text" value="None"/>
Local IP Config	Stop Bits: <input type="text" value="1"/> bit
TTL1	Flow Mode: <input type="text" value="NONE"/>
TTL2	UART Packet Time: <input type="text" value="0"/> (0~255)ms
Web to Serial	UART Packet Length: <input type="text" value="0"/> (0~1460)chars
Misc Config	Sync Baudrate(RF2217 Similar): <input checked="" type="checkbox"/>
Reboot	Enable Uart Heartbeat Packet: <input type="checkbox"/>
	Socket A Parameters
	2 <input type="text" value="Work Mode: TCP Server"/> <input type="text" value="None"/>
	3 <input type="text" value="TCP Server MAX Sockets: 8"/> <input type="text" value="Up to MAX"/> <input type="text" value="KICK"/>
	4 <input type="text" value="Local/Remote Port Number: 23"/> <input type="text" value="8234"/> (1~65535)
	PRINT: <input type="checkbox"/>
	ModbusTCP Poll: <input type="checkbox"/> Poll Timeout : <input type="text" value="200"/> (200~9999) ms
	Enable Net Heartbeat Packet: <input type="checkbox"/>
	Registry Type: <input type="text" value="None"/> Location <input type="text" value="Connect With"/>
	Socket B Parameters
	Work Mode: <input type="text" value="NONE"/>
	5 <input type="button" value="Save"/> <input type="button" value="Cancel"/>

Diagram 4.2.2-3 TCP Server Webpage Setting

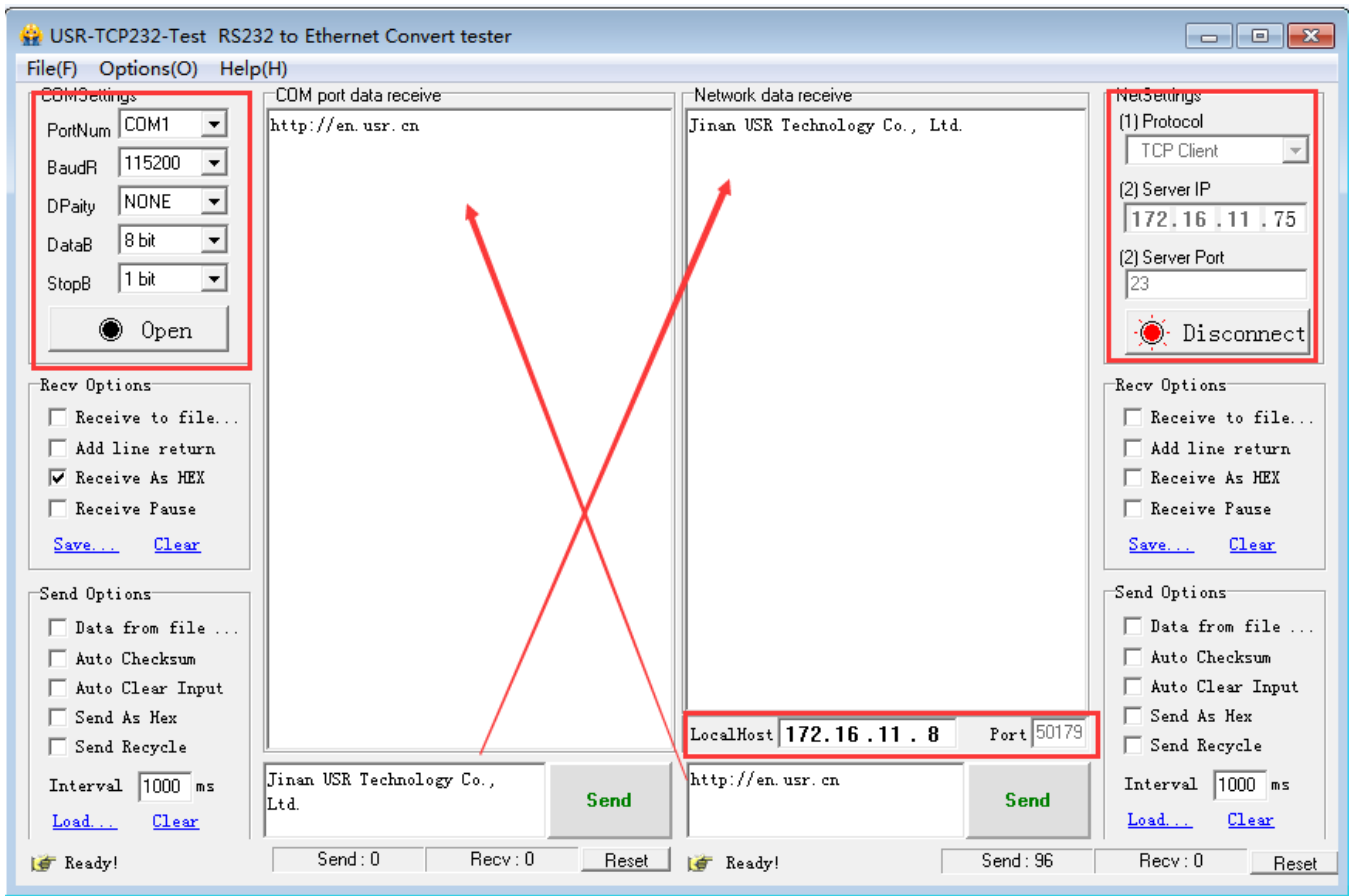


Diagram 4.2.2-4 TCP Connection Testing

4.2.3. UDP Client mode

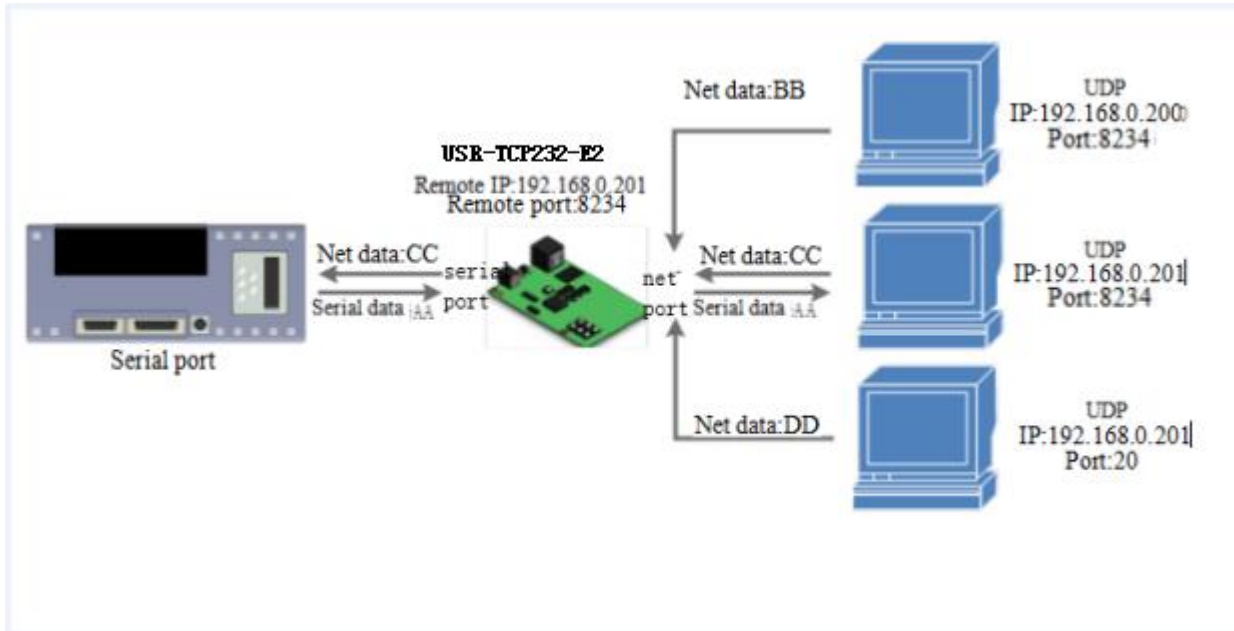


Diagram 4.2.3-1 UDP Client Mode

1. This mode belongs to UDP protocol.
2. UDP client is a wireless transport protocol, provide the transmission service that easy and not reliable. No difference between the disconnecting and connecting, make the IP and port then send data to it. No requirement for drop package. Small data package and fast frequency, send data to point IP.
3. Under UDP client mode ,USR-TCP232-E2 communicate with the remote port of the remote IP, if the data comes from other tunnel, it will not be received by USR-TCP232-E2.
4. Under the UDP client, USR-TCP232-E2 can realize the UDP broadcast if the remote address is 255.255.255.255; meanwhile, it also can receive the broadcast data. 3013 and above firmware supports broadcast in LAN, like xxx.xxx.xxx.255.
5. Communication case:
 - ① Build a UDP, the IP of the PC: 172.16.11.8, port:20108
 - ② USR-TCP232-E2 work in UDP client mode, remote port is 20108

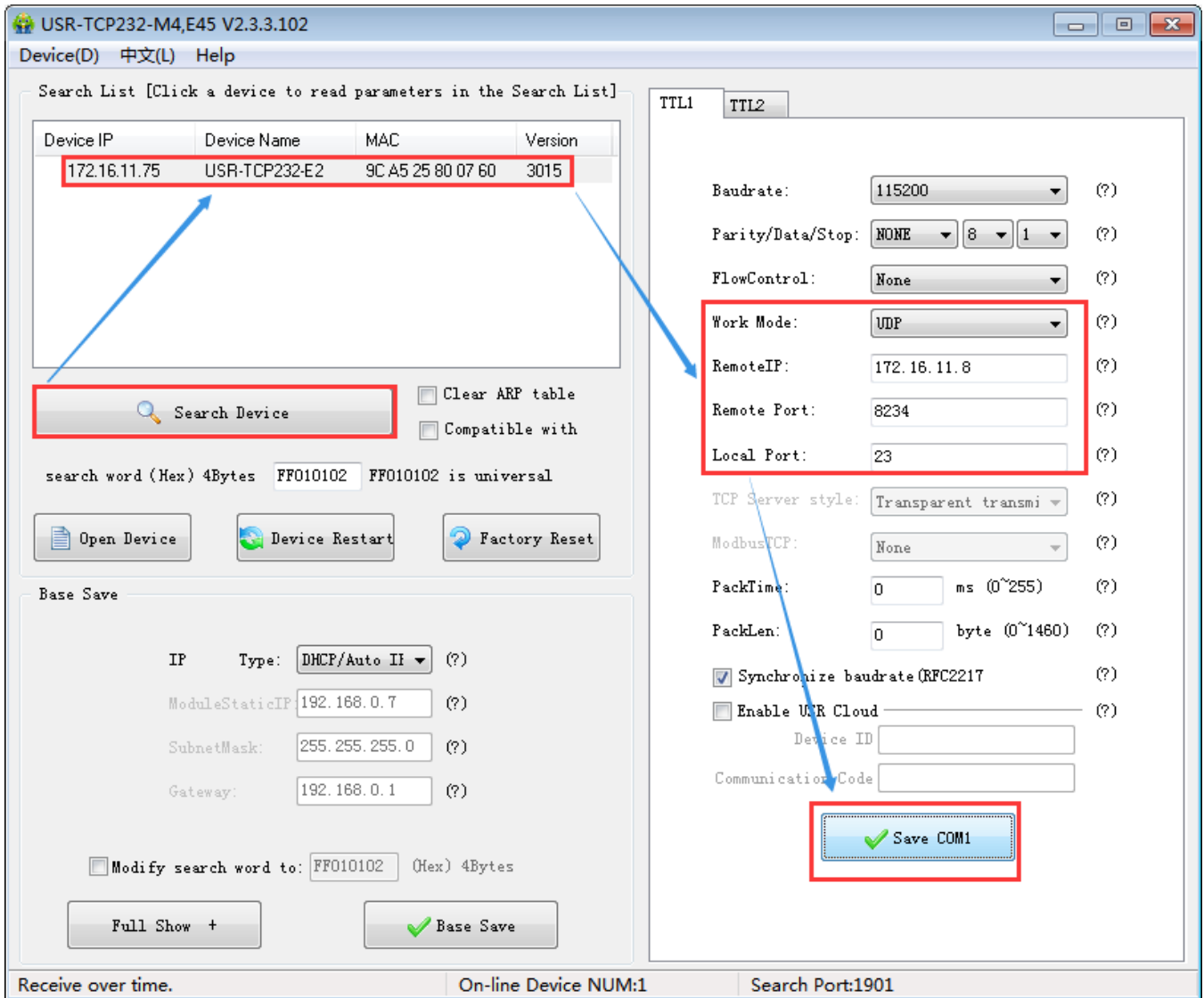


Diagram4.2.3-1 UDP Setup Setting

Current Status	Parity: <input type="text" value="None"/>
Local IP Config	Stop Bits: <input type="text" value="1"/> bit
TTL1	Flow Mode: <input type="text" value="NONE"/>
TTL2	UART Packet Time: <input type="text" value="0"/> (0~255)ms
Web to Serial	UART Packet Length: <input type="text" value="0"/> (0~1460)chars
Misc Config	Sync Baudrate(RF2217 Similar): <input checked="" type="checkbox"/>
Reboot	Enable Uart Heartbeat Packet: <input type="checkbox"/>
Socket A Parameters	
Work Mode: <input type="text" value="UDP Client"/> <input type="text" value="None"/>	
Remote Server Addr: <input type="text" value="172.16.11.8"/> [172.16.11.8]	
Local/Remote Port Number: <input type="text" value="23"/> <input type="text" value="8234"/> (1~65535)	
UDP Not Check Remote PORT: <input type="checkbox"/>	
PRINT: <input type="checkbox"/>	
ModbusTCP Poll: <input type="checkbox"/> Poll Timeout : <input type="text" value="200"/> (200~9999) ms	
Enable Net Heartbeat Packet: <input type="checkbox"/>	
Registry Type: <input type="text" value="None"/> Location <input type="text" value="Connect With"/>	
Socket B Parameters	
Work Mode: <input type="text" value="NONE"/>	
<input type="button" value="Save"/> <input type="button" value="Cancel"/>	

Diagram 4.2.3-2 UDP Webpage

③ Click the serial port send. Received data, the testing software remote IP and port change into IP and port for USR-TCP232-E2, then click net send and send data to serial port.

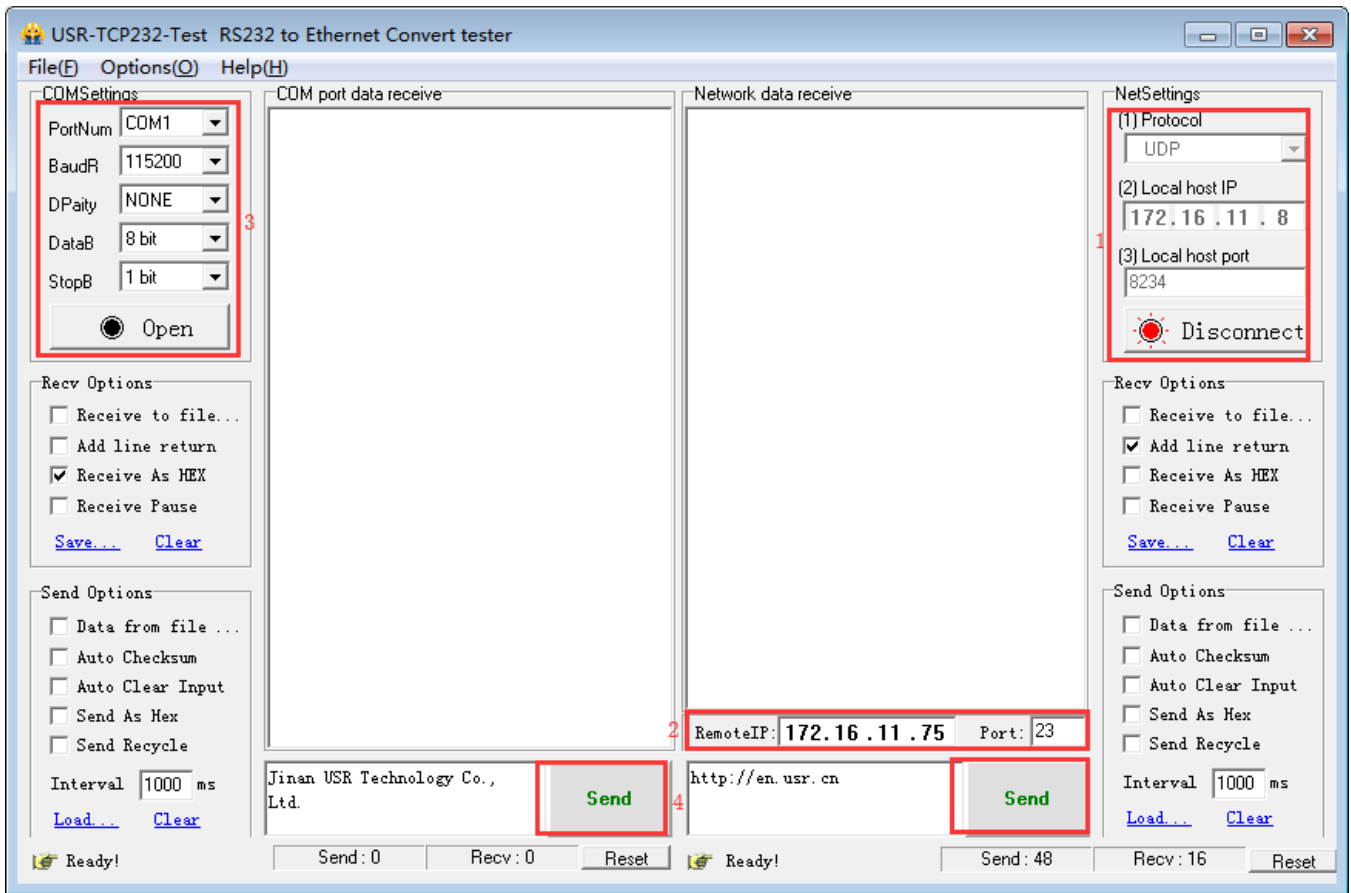


Diagram 4.2.3-3 UDP Connection Testing

4.2.4. UDP Server mode

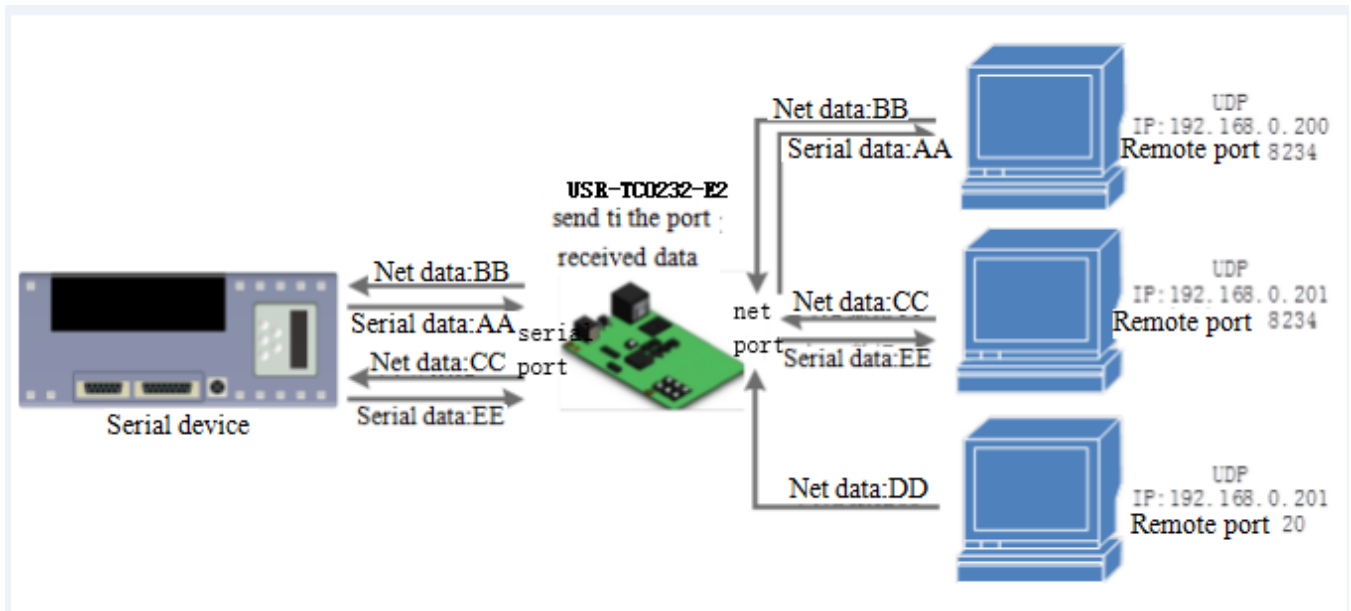


Diagram 4.2.4-1 UDP Server Mode

1. Do not check the original IP address basic on the common UDP, under UDP server mode, USR-TCP232-E2 received the UDP data package and change the remote IP change into data original IP and port, the turn back to the last IP and port.

2. Used in communicating with several device and do not want to use the TCP for the high speed.

3. Application case:

① set USR-TCP232-E2 into UDP server mode, local port is 23

② Click two testing software, work mode:UDP; remote IP and port is the IP and port of USR-TCP232-E2. then click send, the serial port will receive the data , click serial port send, the testing software will display the data that received by the recent one communicating with USR-TCP232-E2.

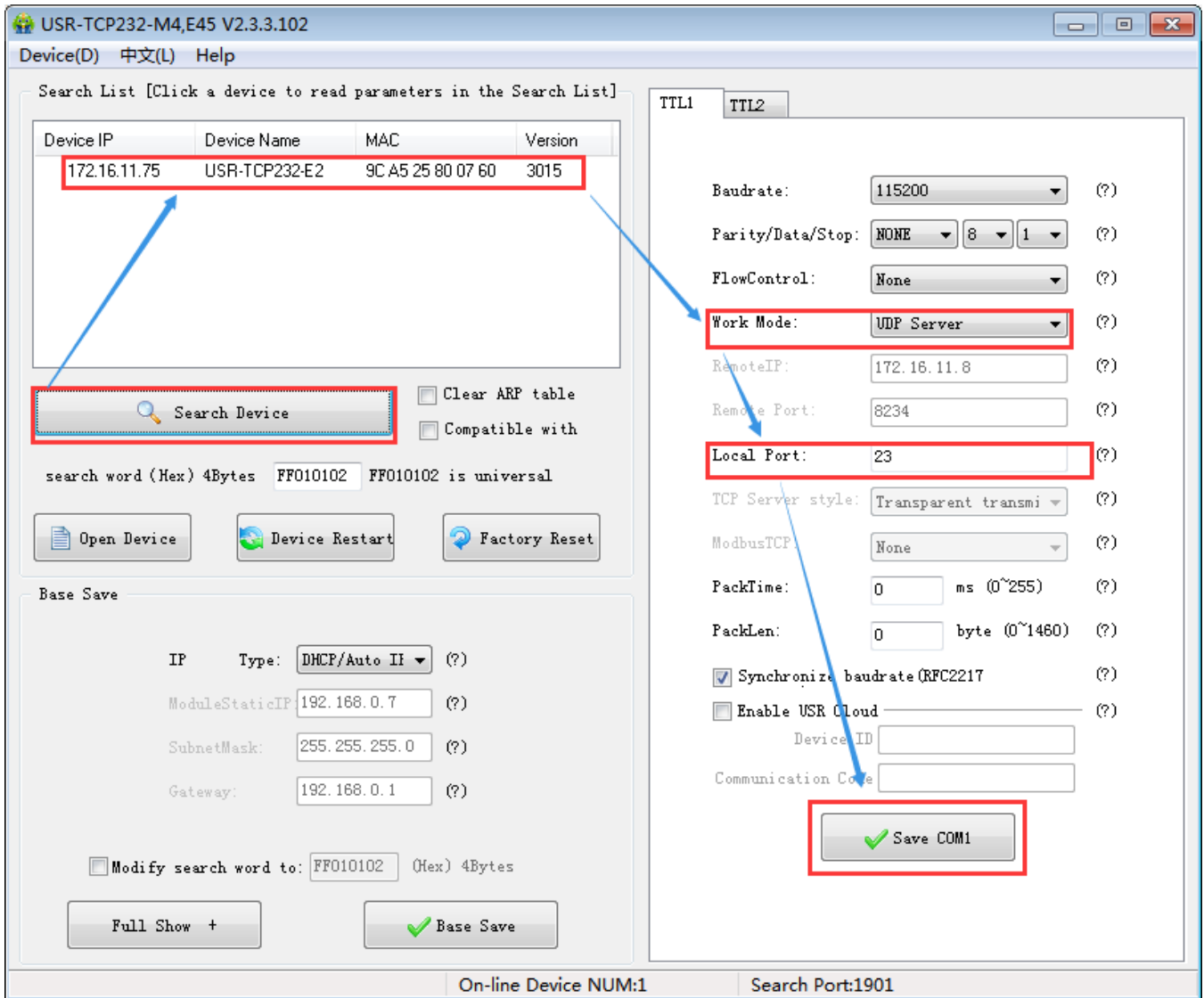


Diagram 4.2.4-2 Setup Setting Software

Current Status	Parity: <input type="text" value="None"/>
Local IP Config	Stop Bits: <input type="text" value="1"/> bit
TTL1	Flow Mode: <input type="text" value="NONE"/>
TTL2	UART Packet Time: <input type="text" value="0"/> (0~255)ms
Web to Serial	UART Packet Length: <input type="text" value="0"/> (0~1460)chars
Misc Config	Sync Baudrate(RF2217 Similar): <input checked="" type="checkbox"/>
Reboot	Enable Uart Heartbeat Packet: <input type="checkbox"/>
Socket A Parameters	
	Work Mode: <input type="text" value="UDP Server"/> <input type="text" value="None"/>
	Remote Server Addr: <input type="text" value="172.16.11.8"/> [N/A]
	Local/Remote Port Number: <input type="text" value="23"/> <input type="text" value="8234"/> (1~65535)
	PRINT: <input type="checkbox"/>
	ModbusTCP Poll: <input type="checkbox"/> Poll Timeout : <input type="text" value="200"/> (200~9999) ms
	Enable Net Heartbeat Packet: <input type="checkbox"/>
	Registry Type: <input type="text" value="None"/> Location <input type="text" value="Connect With"/>
Socket B Parameters	
	Work Mode: <input type="text" value="NONE"/>
	<input type="button" value="Save"/> <input type="button" value="Cancel"/>

Diagram 4.2.4-3 Webpage Setting

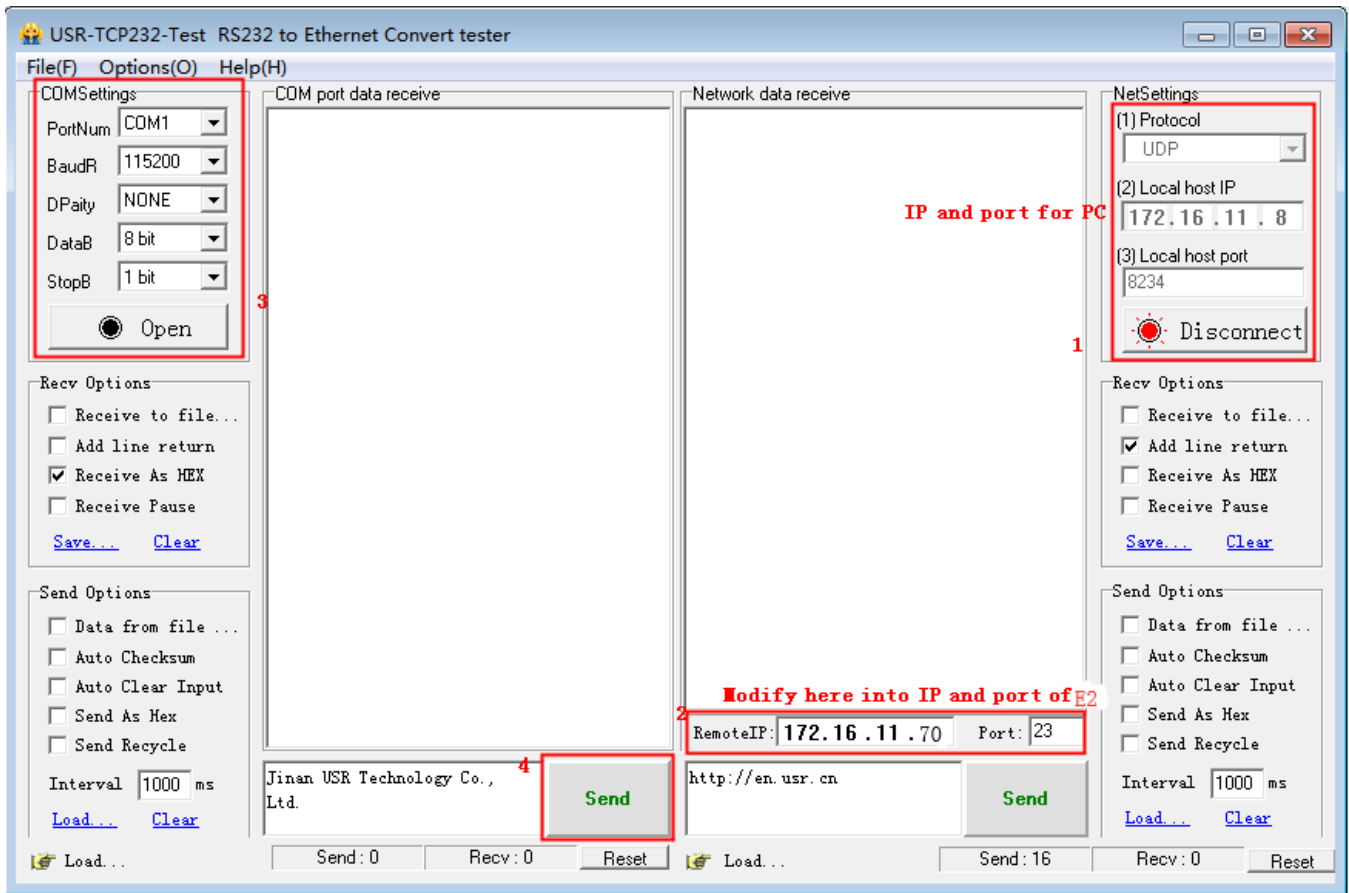


Diagram 4.2.4-4 Connection Testing

4.2.5. HTTPD client

1. Under the HTTPD client mode, user's device send questing data to appointed HTTP server via USR-TCP232-E2, then USR-TCP232-E2 received the data from HTTP serve and analyze it and send to serial device.

2. No need to care of the data converse between the serial port data and net data package, easy parameters configuring and can realize the serial device send questing data to HTTP server.

3. When sending data to HTTP server, the URL, header, remote IP, remote port and other information can be set via USR-TCP232-E2, then save them. Every time send data, USR-TCP232-E2 will add URL and header. In terms of the returned data, user can choose whether to drop the header.

4. Application case:

Current Status	Socket A Parameters	
Local IP Config	Work Mode: Httpd Client None	
TTL1	Httpd Type: GET <input checked="" type="checkbox"/> Remove Httpd Head	
TTL2	Httpd URL(<100byte): <input type="text" value="/1.php?"/>	
Web to Serial	Httpd Client Header(<180byte): <input type="text" value="User_Agent: Mozilla/4.0"/>	
Misc Config	Remote Server Addr: <input type="text" value="172.16.11.8"/> [172.16.11.8]	
Reboot	Local/Remote Port Number: <input type="text" value="23"/> <input type="text" value="8234"/> (1~65535)	
	Server Response Time : <input type="text" value="10"/> (2~255)s	
	PRINT: <input type="checkbox"/>	
	ModbusTCP Poll: <input type="checkbox"/> Poll Timeout : <input type="text" value="200"/> (200~9999) ms	
	Enable Net Heartbeat Packet: <input type="checkbox"/>	
	Registry Type: None Location Connect With	
	Socket B Parameters	
	Work Mode: NONE	
	<input type="button" value="Save"/>	<input type="button" value="Cancel"/>

Diagram 4.2.5-1 HTTP Client Webpage Setting

1. Set into HTTPD client mode via webpage, and set correspond remote IP and port.
2. Setting the HTTPD type, HTTPD URL and httpd client header
3. Hook whether remove HTTPD head when the data send back.
4. Then save them, and restart.
5. Open the serial port to send data and the serial data will submit to your webpage, meanwhile the serial device also received the information that server return.
6. Detailed information can refer to the below diagram.

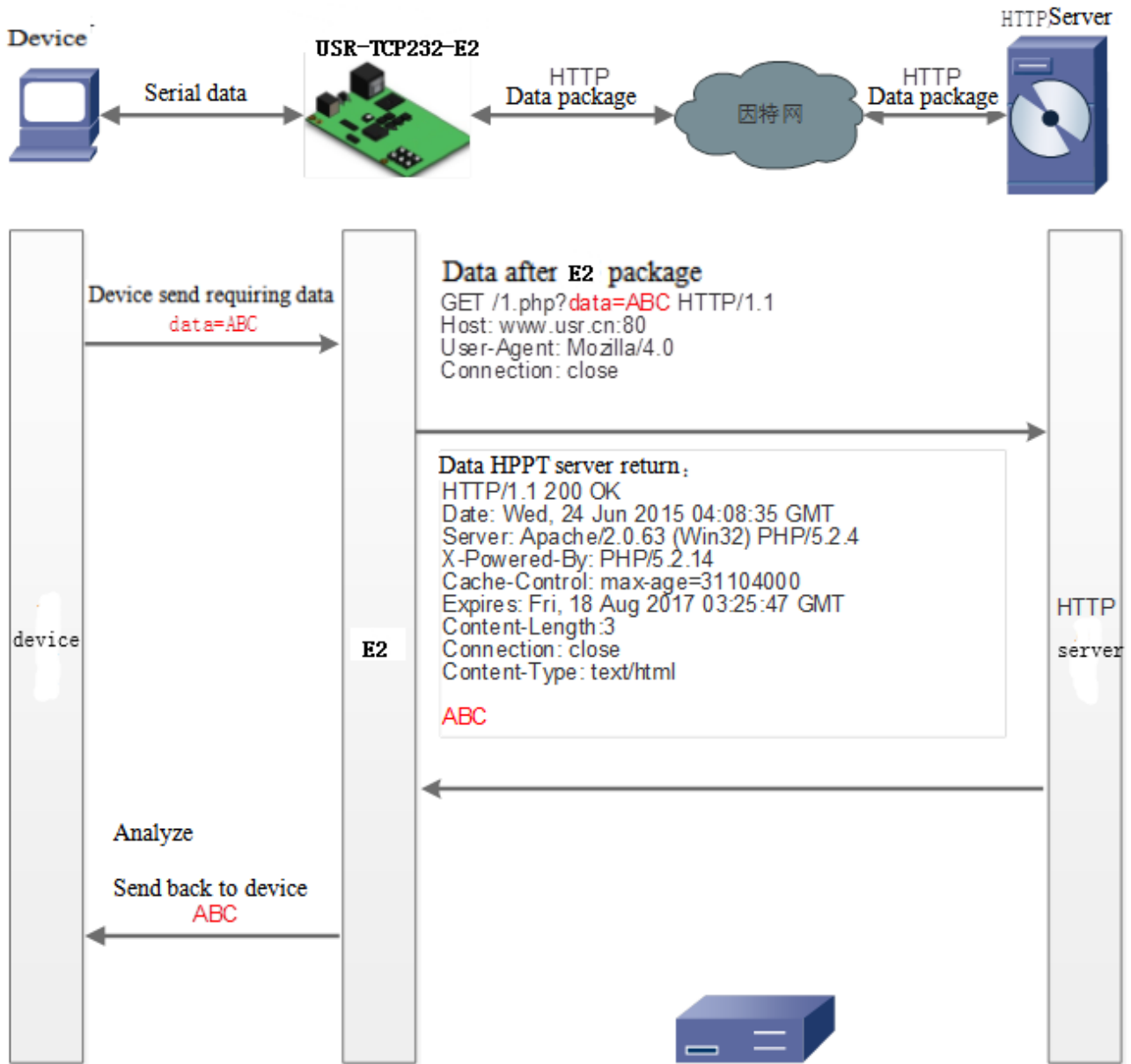


Diagram4.2.5-2 HTTP Work Mode

4.2.6. WebSocket

Webpage to serial port function can realizes the interaction between the serial port and webpage for USR-TCP232-E2. user's device data display to webpage, and realize the interaction between the webpage and device.

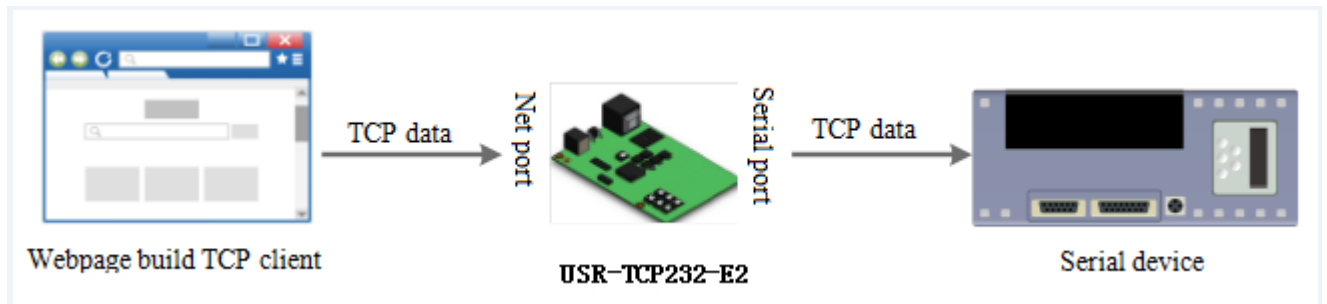


Diagram 4.2.6-1 Websocket Mode

Web to serial port function display:

1. Setting web to serial port, default port:6432
2. Enter webpage, click the web to serial, bond out “connect success” and means that you can receive and send. Open the Testing software, configuring the serial parameters then open the serial port.
3. Click to send ASCII code, serial receive the data. Click send in testing software, the webpage receive the data.


Current Status	parameter
Local IP Config	Websocket connection: 1
TTL1	Receive hex data
TTL2	
Web to Serial	
Misc Config	<div style="border: 1px solid gray; padding: 5px; width: fit-content; margin: auto;"> 来自网页的消息 X <div style="text-align: center; margin: 10px 0;">  connect success! </div> <div style="text-align: center; margin-top: 10px;"> 确定 </div> </div>
Reboot	send ascii data send hex data clear

Diagram 4.2.6-2 Web to Serial Webpage

Webpage to serial port, user should possess of some web program, design the webpage, asking their device data and deal with the data. Then the result will display on the web. After design the webpage, download the webpage to USR-TCP232-E2 according to the defined webpage to realize the development.

1. Build a connection and connect to USR-TCP232-E2

```
function connectx(){  
  
try{  
  
socket=new WebSocket('ws://'+window.location.host+':6432');  
  
socket.binaryType = "arraybuffer";  
  
}catch(e){  
  
alert('error');  
  
return;  
  
}  
  
socket.onopen = sOpen;  
  
socket.onerror=sError;  
  
socket.onmessage=sMessage;  
  
socket.onclose=sClose  
  
}
```

2. Receive the data

```
function sMessage(msg)
```

3. Send data

```
function send()
```

Browser	Version
Chrome	Supported in version 4+
Firefox	Supported in version 4+
Internet Explorer	Supported in version 10+
Opera	Supported in version 10+
Safari	Supported in version 5+

Form 4.2.6-1 Webpage Browser and Version

4.2.7. USR-VCOM



Diagram 4.2.6-1 VCOM

Receive the data assigned VCOM data, and send it in the data of net data using VCOM to solve the PC as a serial port and can not connect with device, which is convenient for users.

E.g.

1. Take USR-TCP232-E2 in TCP Server mode as a server, which is convenient for user to change the computer and connected.

2. Setting the way to connect the VCOM and USR-TCP232-E2 manually:

① Open the VCOM and add the serial port, choose the port: COM2(avoid the exist COM port) protocol use the TCP client, remote IP set to the IP of the USR-TCP232-E2, remote port is the port of the USR-TCP232-E2. note fill the device name.

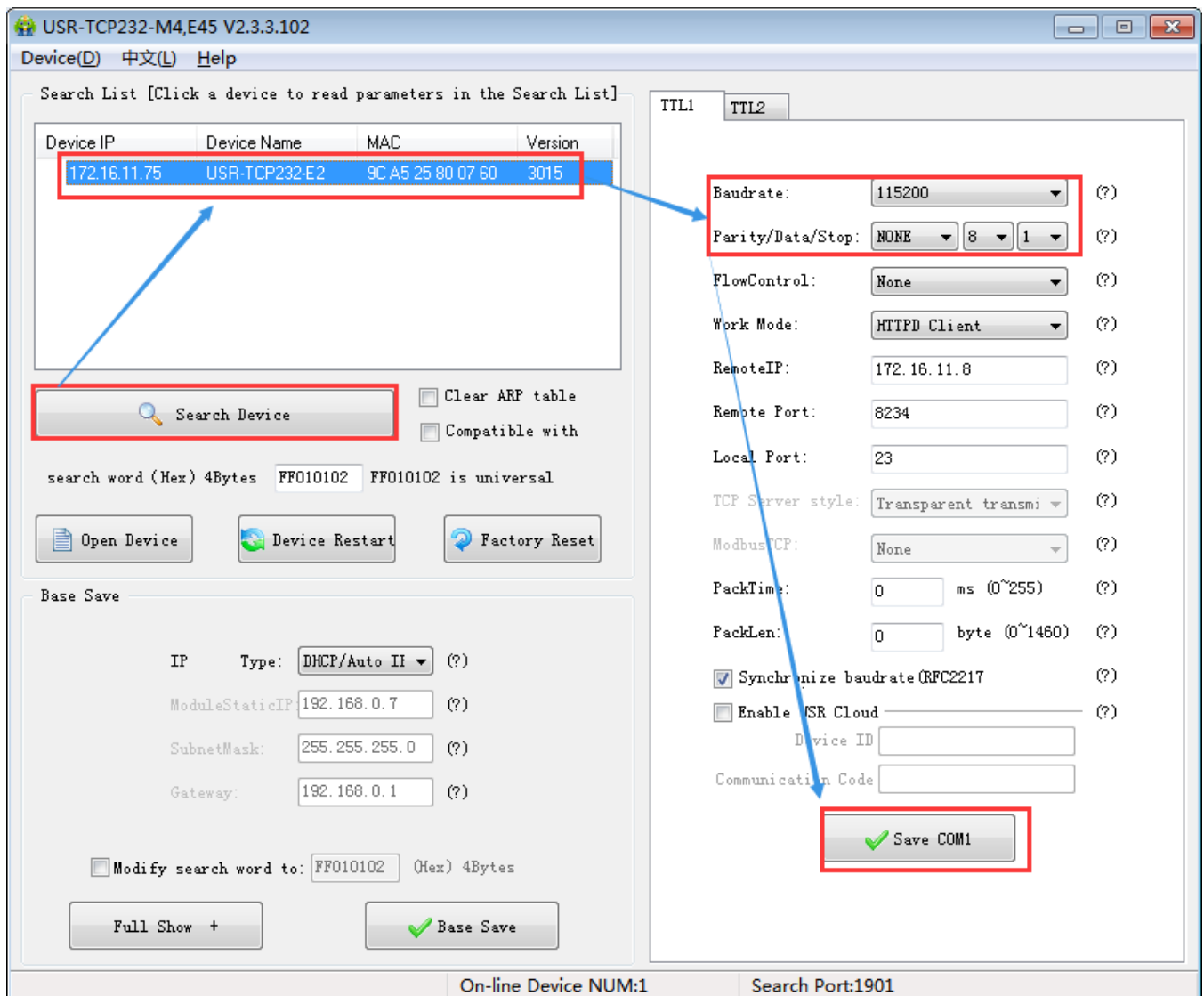
② Click sure, observe if the connection is established, if the connection has established, and you can test the data transport transmission.

3. More information reference the below:

<http://www.usr.cn/Search/getList/keyword/%E8%99%9A%E6%8B%9F%E4%B8%B2%E5%8F%A3/>

4.3. Serial Function

4.3.1. Serial port Basic Parameters



The screenshot shows the 'USR-TCP232-M4,E45 V2.3.3.102' software interface. The 'Search List' table contains the following data:

Device IP	Device Name	MAC	Version
172.16.11.75	USR-TCP232-E2	9C A5 25 80 07 60	3015

The 'Search Device' button is highlighted with a red box. The 'Base Save' section shows the following configuration:

- IP Type: DHCP/Auto II
- ModuleStaticIP: 192.168.0.7
- SubnetMask: 255.255.255.0
- Gateway: 192.168.0.1
- Modify search word to: FFO10102 (Hex) 4Bytes

The 'Serial Function' section shows the following configuration:

- Baudrate: 115200
- Parity/Data/Stop: NONE 8 1
- FlowControl: None
- Work Mode: HTTPD Client
- RemoteIP: 172.16.11.8
- Remote Port: 8234
- Local Port: 23
- TCP Server style: Transparent transmi
- Modbus TCP: None
- PackTime: 0 ms (0~255)
- PackLen: 0 byte (0~1460)
- Synchronize baudrate (RFC2217)
- Enable USR Cloud
- Device ID: []
- Communication Code: []

The 'Save COM1' button is highlighted with a red box. The status bar at the bottom shows 'On-line Device NUM:1' and 'Search Port:1901'.

Diagram 4.3.1-1 Serial Port Basic Parameters

Serial basic parameters includes: baud rate, parity, data and stop

1. Baud rate: serial communication rate, can be set from:600~1Mbps, baud rate supports random baud rate.
2. Data: the length of the data, range from 5~8
3. Stop: can be set from 1~2
4. Parity: none, odd, even, mark, space.

Via setting serial port parameters, keep consistent with the device to make sure communicating.

4.3.2. Flow Control

Current Status	Parity: <input type="text" value="None"/>
Local IP Config	Stop Bits: <input type="text" value="1"/> bit
TTL1	Flow Mode: <input type="text" value="NONE"/>
TTL2	UART Packet Time: <input type="text" value="RTS/CTS"/> ~255)ms
Web to Serial	UART Packet Length: <input type="text" value="0"/> (0~1460)chars
Misc Config	Sync Baudrate(RF2217 Similar): <input checked="" type="checkbox"/>
Reboot	Enable Uart Heartbeat Packet: <input type="checkbox"/>
Socket A Parameters	
Work Mode: <input type="text" value="TCP Client"/> <input type="text" value="None"/>	
Remote Server Addr: <input type="text" value="172.16.11.8"/> [172.16.11.8]	
Local/Remote Port Number: <input type="text" value="23"/> <input type="text" value="8234"/> (1~65535)	
Timeout Reconnection : <input type="text" value="86400"/> (1~99999)s	
PRINT: <input type="checkbox"/>	
ModbusTCP Poll: <input type="checkbox"/> Poll Timeout : <input type="text" value="200"/> (200~9999) ms	
Enable Net Heartbeat Packet: <input type="checkbox"/>	
Registry Type: <input type="text" value="None"/> Location <input type="text" value="Connect With"/>	
Socket B Parameters	
Work Mode: <input type="text" value="NONE"/>	
<input type="button" value="Save"/> <input type="button" value="Cancel"/>	

Diagram 4.3.2-1 Serial Flow Control

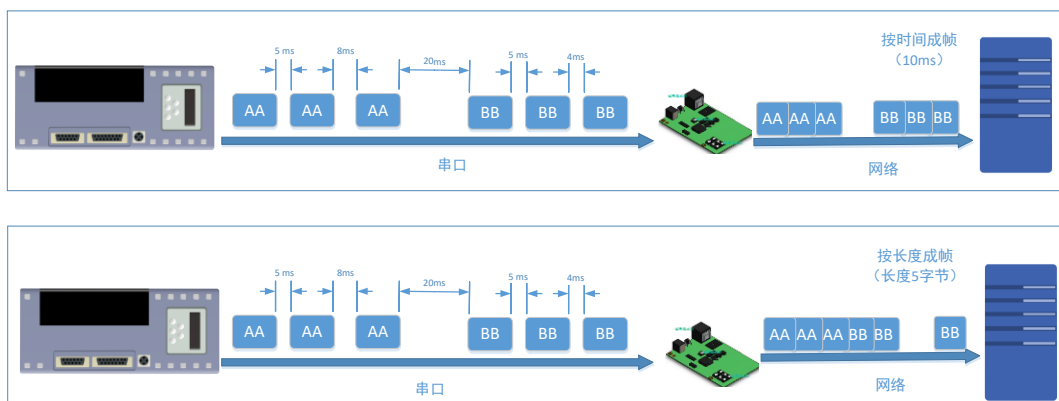
Flow control: the way for serial port flow control, users can choose to enable 485 or not, control the receive and send for 485, 3013 and later default enable 485 control mode, under the condition that no hardware flow control, enable 485.

1. NONE: default serial port mode, under this mode, 3013 and later version enable 485
2. RTS/CTS: hardware flow control. The hardware flow control for USR-TCP232-E2 supports RTS/CTS.
3. Xon/Xoff: software flow control. 3013 and later version enable the software flow control.

Hardware or software flow control deal the serial port data for better. When the serial port received buffer data out than the threshold value, inform the remote port stop sending data until complete buffering, then inform to deal with data.

Usually used in the situation that rich in time.

4.3.3. Serial Port Mapping



The serial packing time and length of USR-TCP232-E2 can be set. Packing the serial port data according to the packing time and packing length under the transparent transmission mode .

The frame mechanism of serial port is based on the packaging time and the packaging length. The case are as fellow.

1. Packing time set as 10ms and the length as 512.

If the internal time for serial received the data more than 10ms, or the length more than 512, USR-TCP232-E2 send packing to net when the serial port receive data.

2. If the packing time is 0 and the packing length is not 0, only the packing length work; and if the packing length is 0 and the packing time is not 0, only the packing time work.

3. Set the packing time is 0 ms and the packing length is 0

When the packing time is 0ms, USR-TCP232-E2 works the default packing time: if the interval that serial port received data more than packing time for send 4 byte, USR-TCP232-E2 send packing. E.g. baud rate 115200, 4 bytes packing time is:

$T=0.4\text{ms}$, (if the value less than 0.1ms. Packing time calculates as 0.1ms.

$$T = 1/\text{baud rate} * 10 * 4$$

4. For the limit of the serial port speed, users should control the flow when USR-TCP232-E2 receive the data from net and send to serial, or there will be data over flow in serial. So when send net data to serial, user should calculate the data flow. E.g.

Calculate way: if sending M bytes need N s. the way to check for possible overflow methods (if the net situation is ok, the time can be ignored). The time for M bytes:

$$T = 1/\text{baud rate} * 10 * m$$

If there is no overflow, M bytes of data must be transmit within Ns,

$N > 2T$ is require for USR-TCP232-E2 to work properly. If the baud rate is less than 9600, keep $n > T$.

Serial packing time: default is 4 bytes time, can be set from 0~255.

Serial packing length: default 1460, can be set from the 0~1460.

4.3.4. Similar RFC2217

Similar RFC2217 is a simple RFC2217 protocol, working with the VCOM and changing serial port parameters candynamically to realize the communication with variable serial port parameters.

Enable this function, using USR-VCOM can open this function, which can realize the serial baud of the PC software and USR-TCP232-E2 automatically match. No need to pay attention to serial port baud rate setting.

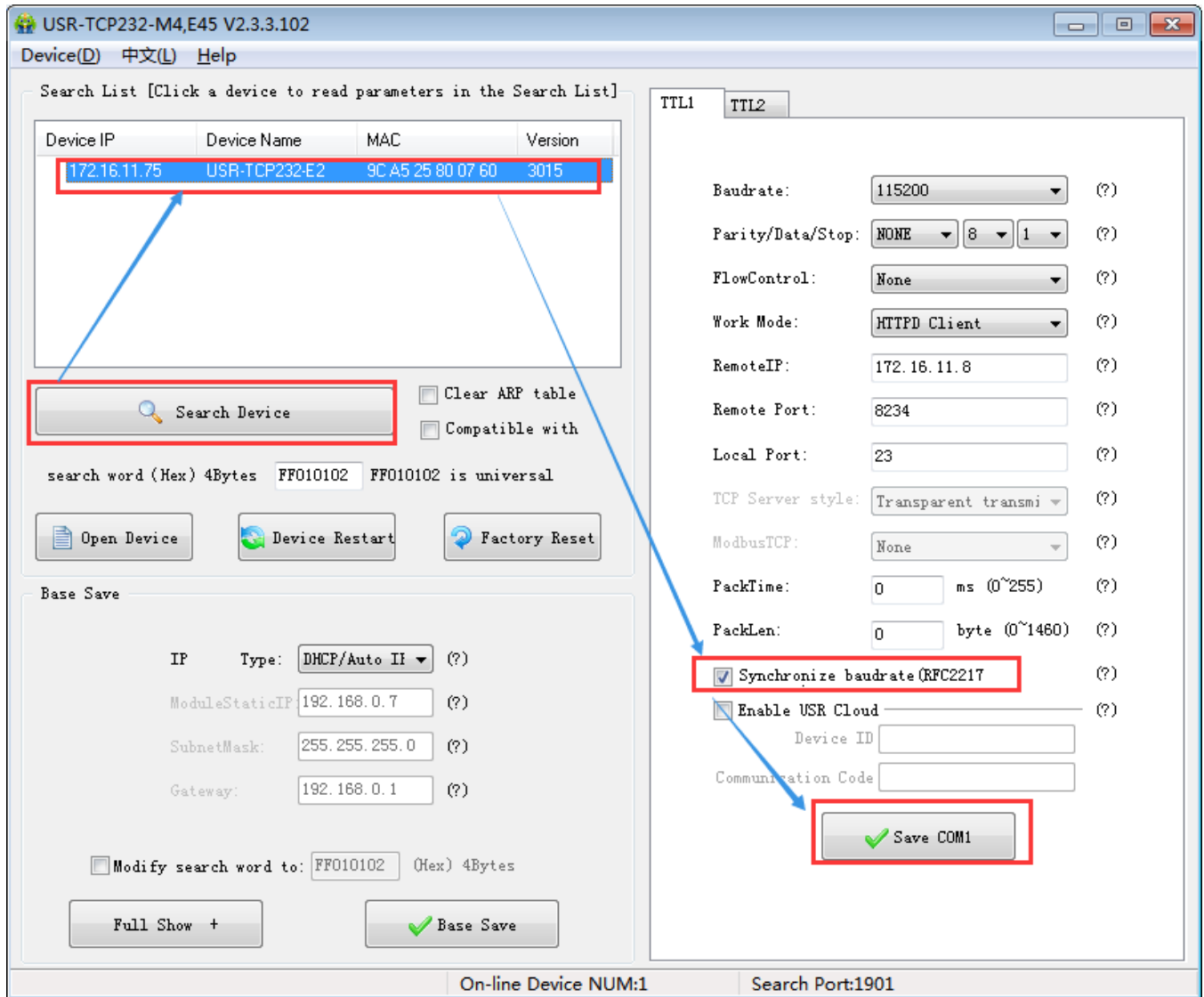


Diagram 4.3.4-1 Similar RFC2217 Function

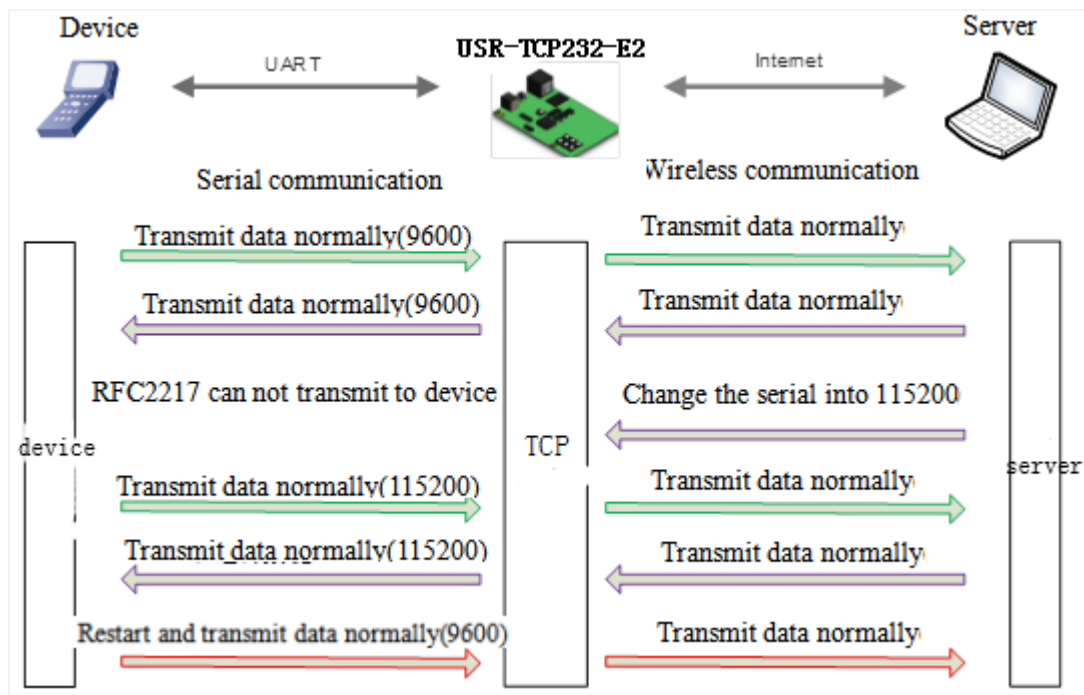


Diagram 4.3.4-2 RFC2217 Function

For the encryption of data transmission in some industrial situation, some device will change the data length, baud, parity and other parameters in the transmission, and USR-TCP232-E2 supports this function.

Protocol length is 8 bytes, details are as follows. The value in example are in HEX type.

name	Package head	Baud rate	Median parameter	Parity sum
bytes	3	3	1	1
instr	3 byte to reduce miscalculation	High in front, and the minimum is 600(00 02 58)	data/stop/parity, next chart	Four sum except the package head .
115200,N,8,1	55 AA 55	01 C2 00	03	C6
9600, N,8,1	55 AA 55	00 25 80	03	A8

Form4.3.4-1 RFC 2217 Function Protocol

A no.	instr	value	Describe
1:0	data bits select	00	5 data bits
		01	6 data bits
		10	7 data bits
		11	8 data bits
2	stop	0	1 stop
		1	2 stop
3	Parity enable	0	Disable parity
		1	Enable parity
5:4	Parity type	00	ODD
		01	EVEN
		10	Mark
		11	Clear
7:6	none	00	Please fill 0

Form4.3.4-2 Serial Port Parameters Basic Meaning

Enable Note:

- 1) When using RFC2217, click setting software RFC2217 to enable this function.
- 2) When the serial port parameters change, send the RFC2217 package, after USR-TCP232-E2 received the RFC2217 command, modify the serial parameters and can not transparent transmission.

4.4. Special Function

4.4.1. Heartbeat Package Function

Under Transparent transmission mode, have the USR-TCP232-E2 sent heartbeat package to net server or the serial port.

Heartbeat package send to the net to keep connecting with server and works in TCP client and UDP client mode.

Send heartbeat package to serial port and instead of the query command from net to reduce the communication flow.

3013 and above version supports heartbeat function which can send to serial and net.

Current Status	UART Packet Length: <input type="text" value="0"/> (0~1460)chars
Local IP Config	Sync Baudrate(RF2217 Similar): <input checked="" type="checkbox"/>
TTL1	Enable Uart Heartbeat Packet: <input checked="" type="checkbox"/>
TTL2	Uart Heartbeat Packet: <input type="text" value="www.usr.cn"/>
Web to Serial	HEX: <input type="checkbox"/> ASCII: <input checked="" type="checkbox"/>
Misc Config	Beat Time: <input type="text" value="30"/> (1~65535)s
Reboot	Socket A Parameters
	Work Mode: <input type="text" value="TCP Client"/> <input type="text" value="None"/>
	Remote Server Addr: <input type="text" value="172.16.11.8"/> [<input]]<="" td="" type="text" value="172.16.11.8"/>
	Local/Remote Port Number: <input type="text" value="23"/> <input type="text" value="8234"/> (1~65535)
	Timeout Reconnection : <input type="text" value="86400"/> (1~99999)s
	PRINT: <input type="checkbox"/>
	ModbusTCP Poll: <input type="checkbox"/> Poll Timeout : <input type="text" value="200"/> (200~9999) ms
	Enable Net Heartbeat Packet: <input type="checkbox"/>
	Registry Type: <input type="text" value="None"/> Location <input type="text" value="Connect With"/>
	Socket B Parameters
	Work Mode: <input type="text" value="NONE"/>
	<input type="button" value="Save"/> <input type="button" value="Cancel"/>

Diagram 4.4.1-1 Heartbeat Webpage

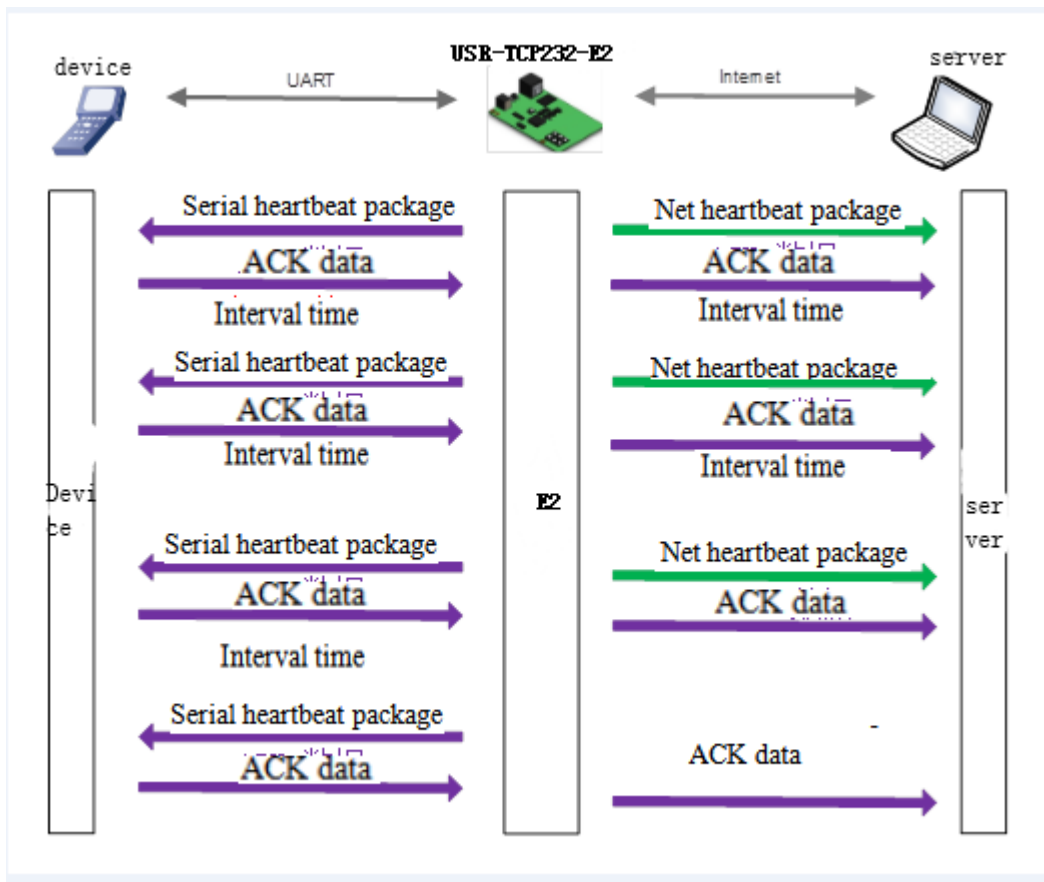


Diagram 4.4.1-2 Heartbeat Function

Note: net heartbeat package and serial heartbeat package can be not used.

4.4.2. Modbus Gateway

Modbus gateway includes modbus RTU transmission, modbus ASCII transmission, modbus RTU to TCP, modbus polling and serial query.

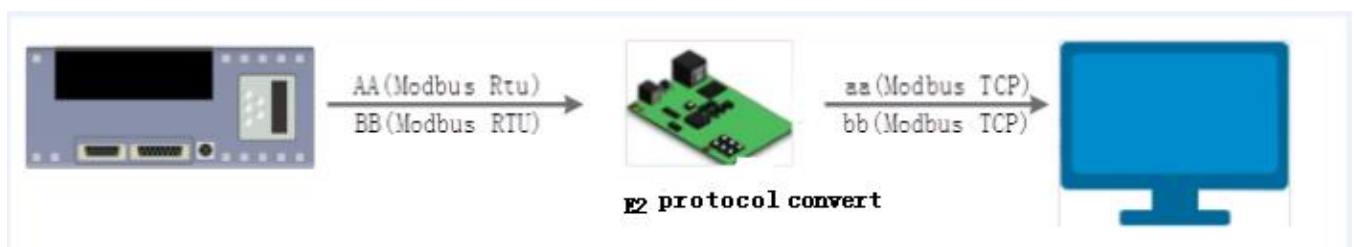


Diagram 4.4.2-1 Modbus TCP

Modbus RTU and modbus TCP: can realize the modbus serial port protocol and modbus net protocol convert.

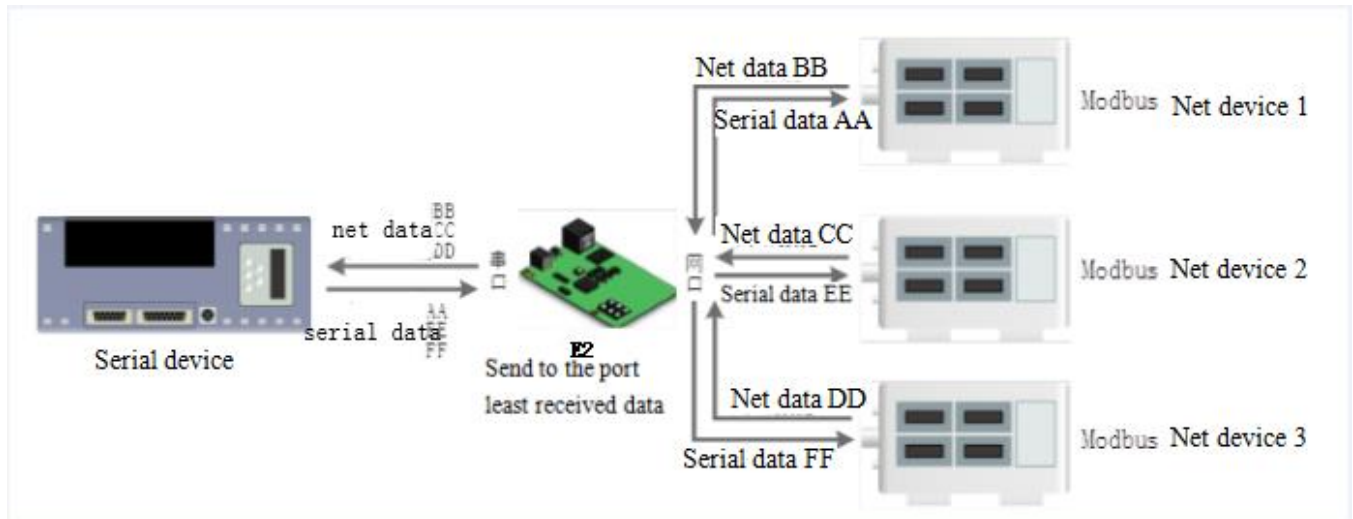


Diagram 4.4.2-1 Modbus TCP Polling

Modbus polling:supports more than one master PC query the data of slave PC, the timeout can be set. 3013 and above version supports this function.

4.4.3. Registration Package

Under the net transparent transmission mode, user can have the module sent registration package to server to recognize the original of the data or work as the authorization code for server function.

Registration can be sent when the connection build between the module and server, also it can inset a registration package data in front of the data package. The data registered can be MAC address or the definition registration package(at most the definition registration can be 40 byte.)

3013 and above version supports the registration package.

Send registration package when building connection usually used in the situation that connecting the server needed to register.



Diagram 4.4.3-1 Building send Registration Package

Carrying the registration package:insert the package in front of the registration and used in the protocol transmission.

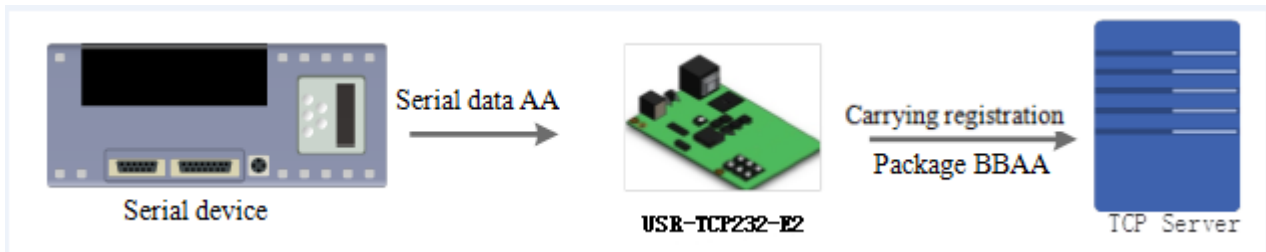


Diagram 4.4.3-2 Carrying Registration Package

Current Status	UART Packet Length: <input type="text" value="0"/> (0~1460)chars
Local IP Config	Sync Baudrate(RF2217 Similar): <input checked="" type="checkbox"/>
TTL1	Enable Uart Heartbeat Packet: <input checked="" type="checkbox"/>
TTL2	Uart Heartbeat Packet: <input type="text" value="www.usr.cn"/>
Web to Serial	HEX: <input type="checkbox"/> ASCII: <input checked="" type="checkbox"/>
Misc Config	Beat Time: <input type="text" value="30"/> (1~65535)s
Reboot	Socket A Parameters
	Work Mode: <input type="text" value="TCP Client"/> <input type="text" value="None"/>
	Remote Server Addr: <input type="text" value="172.16.11.8"/> [172.16.11.8]
	Local/Remote Port Number: <input type="text" value="23"/> <input type="text" value="8234"/> (1~65535)
	Timeout Reconnection : <input type="text" value="86400"/> (1~99999)s
	PRINT: <input type="checkbox"/>
	ModbusTCP Poll: <input type="checkbox"/> Poll Timeout : <input type="text" value="200"/> (200~9999) ms
	Enable Net Heartbeat Packet: <input type="checkbox"/>
	Registry Type: <input type="text" value="USER Register"/> Location <input type="text" value="Connect With"/>
	Net Registry Packet: <input type="text" value="www.usr.cn"/>
	HEX: <input type="checkbox"/> ASCII: <input checked="" type="checkbox"/>
	Socket B Parameters
	Work Mode: <input type="text" value="NONE"/>
	<input type="button" value="Save"/> <input type="button" value="Cancel"/>

Diagram 4.4.3-3 Registration Webpage

4.4.4. USR-cloud

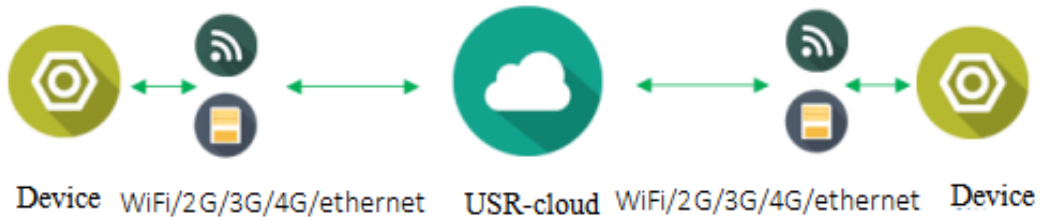


Diagram 4.4.3-1 USR-cloud

USR-cloud aim to solve the problem of the communication between device and device, device and upper machine(android, IOS,PC).USR-cloud used to transparent transport the data, the device connected can access remote data without modify.USR-cloud can used in remote monitor, the internet of things, the internet of cars and intelligent house, so the USR-TCP232-E2 installed USR-cloud. More information can be scan <http://console.usriot.com>

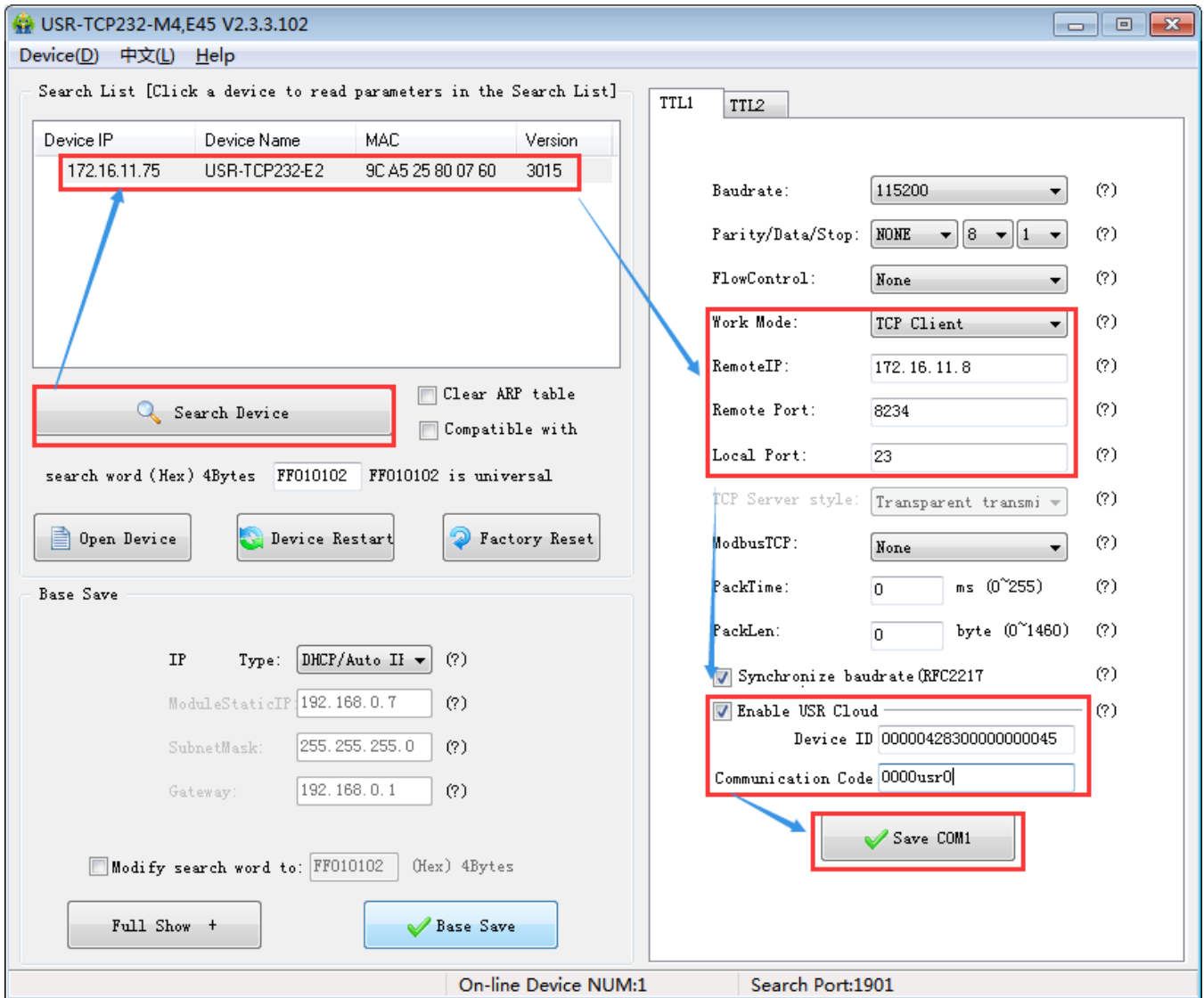


Diagram 4.4.3-2 USR-cloud Software Setting

Note: under the TCP client mode .

Also can be set in the webpage as follows:

Current Status	UART Packet Time: <input type="text" value="0"/> (0~255)ms
Local IP Config	UART Packet Length: <input type="text" value="0"/> (0~1460)chars
TTL1	Sync Baudrate(RF2217 Similar): <input checked="" type="checkbox"/>
TTL2	Enable Uart Heartbeat Packet: <input type="checkbox"/>
Web to Serial	Socket A Parameters
Misc Config	Work Mode: <input type="text" value="TCP Client"/> <input type="text" value="None"/>
Reboot	Remote Server Addr: <input type="text" value="172.16.11.8"/> [<input]]<="" td="" type="text" value="172.16.11.8"/>
	Local/Remote Port Number: <input type="text" value="23"/> <input type="text" value="8234"/> (1~65535)
	Timeout Reconnection : <input type="text" value="86400"/> (1~99999)s
	PRINT: <input type="checkbox"/>
	ModbusTCP Poll: <input type="checkbox"/> Poll Timeout : <input type="text" value="200"/> (200~9999) ms
	Enable Net Heartbeat Packet: <input type="checkbox"/>
	Registry Type: <input type="text" value="USR Cloud"/> Location <input type="text" value="Connect With"/>
	Device ID: <input type="text" value="00000428300000000045"/>
	Communications Code: <input type="text" value="0000usr0"/>
	Socket B Parameters
	Work Mode: <input type="text" value="NONE"/>
	<input type="button" value="Save"/> <input type="button" value="Cancel"/>

Diagram 4.4.3-3 USR-cloud Webpage Setting

USR-cloud software is a platform for communication between devices and PC software. The cloud software is mainly used for data transmission or monitoring remotely. This function only works in TCP client mode and supports the devices with firmware 3009 and later versions.

- Login link of USRIOT Cloud: <http://console.usriot.com>
- Remote server address: console.usriot.com
- Local port: The port of device, Remote port: Cloud software's port
- Device ID: It is assigned to device by cloud software
- Communications Code: Password generated after adding the device to cloud software

The following is test account of USR-cloud:

Account:jin321_

Password:1987322

4.4.5. Net Printing

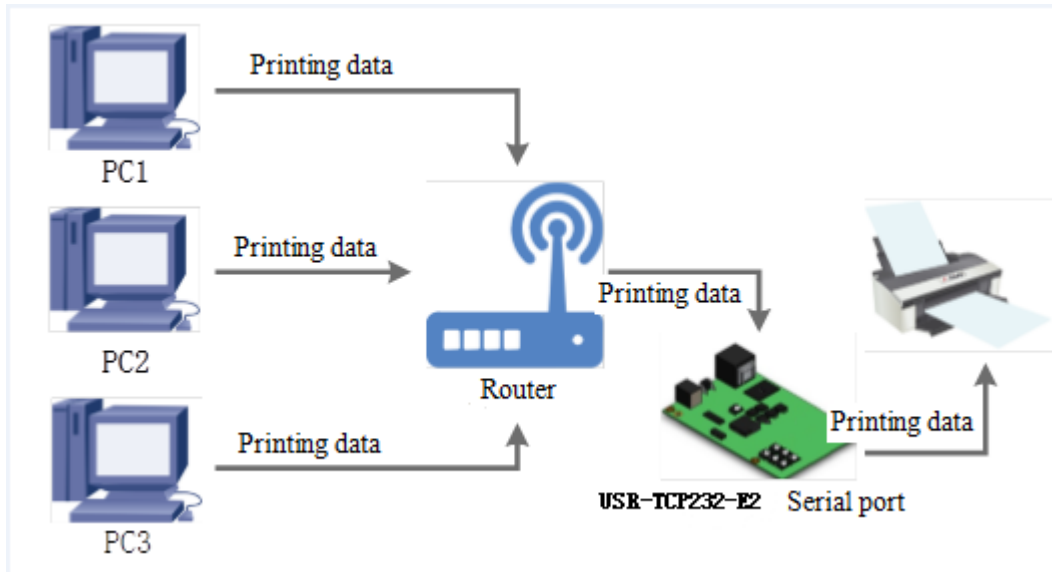


Diagram 4.4.5-1 Net Printing

USR-TCP232-E2 can connect with the serial printing, operating the printing via net, and change the serial printer into net printer, 3013 and above version supports this function.

Testing way:

1. Configuring module parameters:work mode:TCP server, local port:9100

Current Status	UART Packet Time: <input type="text" value="0"/> (0~255)ms
Local IP Config	UART Packet Length: <input type="text" value="0"/> (0~1460)chars
TTL1	Sync Baudrate(RF2217 Similar): <input checked="" type="checkbox"/>
TTL2	Enable Uart Heartbeat Packet: <input type="checkbox"/>
Web to Serial	Socket A Parameters
Misc Config	Work Mode: <input type="text" value="TCP Server"/> <input type="text" value="None"/>
Reboot	TCP Server MAX Sockets: <input type="text" value="8"/> Up to MAX <input type="text" value="KICK"/>
	Local/Remote Port Number: <input type="text" value="9100"/> <input type="text" value="8234"/> (1~65535)
	PRINT: <input checked="" type="checkbox"/>
	ModbusTCP Poll: <input type="checkbox"/> Poll Timeout : <input type="text" value="200"/> (200~9999) ms
	Enable Net Heartbeat Packet: <input type="checkbox"/>
	Registry Type: <input type="text" value="None"/> Location: <input type="text" value="Connect With"/>
	Socket B Parameters
	Work Mode: <input type="text" value="NONE"/>
	<input type="button" value="Save"/> <input type="button" value="Cancel"/>

Diagram 4.4.5-2 Net Printing

4.4.6. Customize Webpage

USR-TCP232-E2 supports customize webpage. The user can upgrade their webpage into USR-TCP232-E2 via customize webpage. To be more convenient for user, we have prepared upgrade webpage package

Including webpage code(USR-TCP232-E2 default webpage code and medium webpage code), webpage tools can be download.

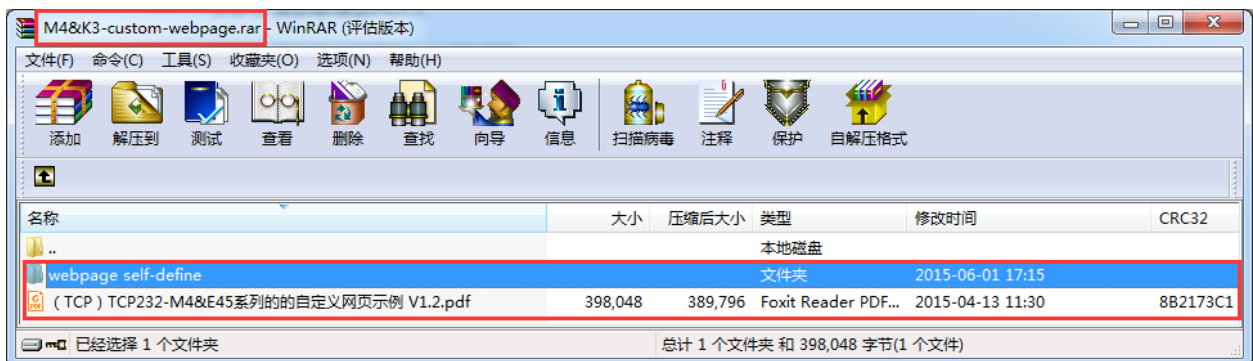


Diagram 4.4.6-1 Package Update

Steps to realize the customize webpage:

1. If you will customize webpage, please contact with the USR supports or the sale.

Modify the webpage code, open “UpgradeHtml.exe”, destination IP is the IP of USR-TCP232-E2, the final name of file is “fs”, product choose the “M4”, then click the upgrade.

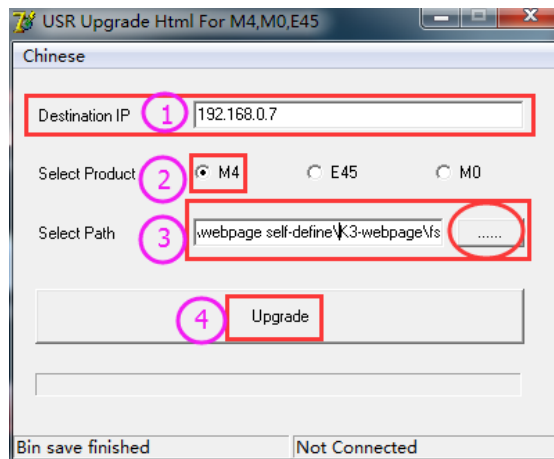


Diagram 4.4.6-2 Webpage Upgrade

4.4.7. Customize MAC

The unique MAC in the world for USR-TCP232-E2, begin with D8B04, checked in the webpage. If the user have special demand, can set instant MAC via webpage. Please do not all F. restore to the factory setting and the MAC will be back to the factory MAC.

The below is MAC setting webpage.

Current Status	<p style="text-align: center;">parameter</p> <p>Module Name: <input type="text" value="USR-TCP232-E2"/></p> <p>Websocket Port : <input type="text" value="6432"/></p> <p>Webserver Port: <input type="text" value="80"/></p> <p>MAC Address: <input type="text" value="9c-a5-25-80-07-60"/></p> <p>User Name: <input type="text" value="admin"/></p> <p>Pass Word: <input type="text" value="admin"/></p> <p>Buffer Data Before Connected: <input type="checkbox"/></p> <p>Reset Timeout: <input type="text" value="3600"/> (60~65535) s</p> <p style="text-align: center;"><input type="button" value="Save"/> <input type="button" value="Cancel"/></p>
Local IP Config	
TTL1	
TTL2	
Web to Serial	
Misc Config	
Reboot	

Diagram 4.4.7-1 Customize MAC

4.4.8. Restart Timeout

Restart timeout(no data restore) used to keep USR-TCP232-E2 long time stable work. When net port can not receive the data, or have note receive data for long time, USR-TCP232-E2 will restart in the time to prevent the communication from the abnormal. The time can be set via webpage and AT command, range from 60~65535s, default value is 3600s. When the time less than 60s, default is 0 which means that disable this function.

Current Status	parameter
Local IP Config	Module Name: <input type="text" value="USR-TCP232-E2"/>
TTL1	Websocket Port : <input type="text" value="6432"/>
TTL2	Webserver Port: <input type="text" value="80"/>
Web to Serial	MAC Address: <input type="text" value="9c-a5-25-80-07-60"/>
Misc Config	User Name: <input type="text" value="admin"/>
Reboot	Pass Word: <input type="text" value="admin"/>
	Buffer Data Before Connected: <input type="checkbox"/>
	Reset Timeout: <input type="text" value="3600"/> (60~65535) s
	<input style="border: 2px solid red;" type="button" value="Save"/> <input type="button" value="Cancel"/>

Diagram 4.4.8-1 Reset timeout

4.4.9. Clear Buffer Data

Before data connection, data serial port received will be put in the buffer zone. USR-TCP232-E2 serial received buffer:2Kbyte. After connecting the TCP connection, clear the buffer data or not can be choose in the webpage, default do not clear. If user enable the short connection, this function will do not work.

Current Status	parameter
Local IP Config	Module Name: <input type="text" value="USR-TCP232-E2"/>
TTL1	Websocket Port : <input type="text" value="6432"/>
TTL2	Webserver Port: <input type="text" value="80"/>
Web to Serial	MAC Address: <input type="text" value="9c-a5-25-80-07-60"/>
Misc Config	User Name: <input type="text" value="admin"/>
Reboot	Pass Word: <input type="text" value="admin"/>
	Buffer Data Before Connected: <input type="checkbox"/>
	Reset Timeout: <input type="text" value="3600"/> (60~65535) s
	<input style="border: 2px solid red;" type="button" value="Save"/> <input type="button" value="Cancel"/>

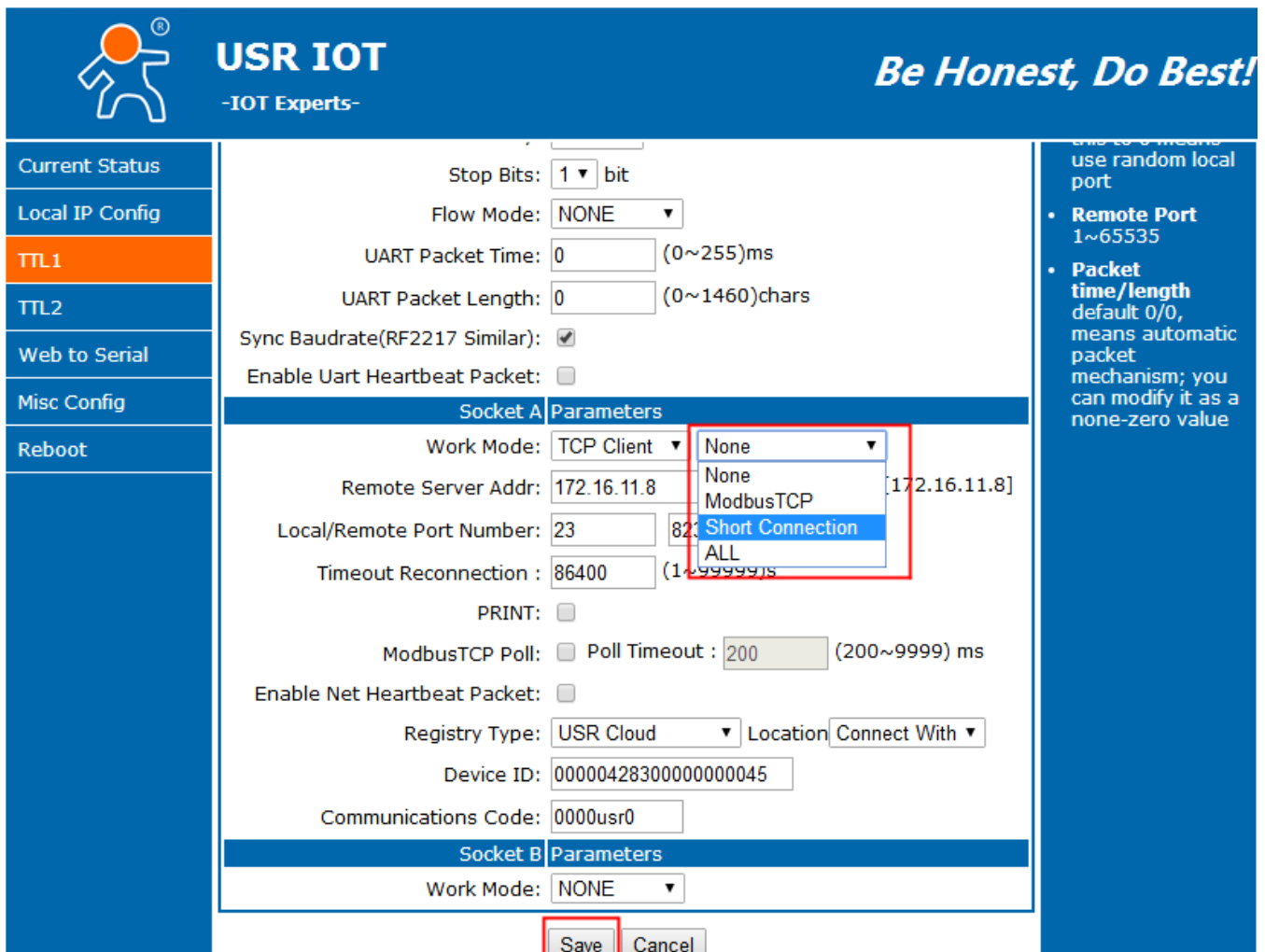
Diagram4.4.9-1 Clear Buffer Data

4.4.10. Short Connection

Used to save the server resource, used in the situation that several point to one. Short connection make sure all the connection can work, do not need any extra way to filtrate.

TCP short connection can used under the TCP client mode. Enable the short connection and send data, if there is no data received any data in serial port or the net port, it will disconnect.

Default disable, the interval time can be set, range from 2~255s, default 3s. setting diagram are as follow:



The screenshot shows the USR IOT configuration interface. On the left is a navigation menu with options: Current Status, Local IP Config, **TTL1**, TTL2, Web to Serial, Misc Config, and Reboot. The main area is titled 'Socket A Parameters' and contains the following settings:

- Stop Bits: 1 bit
- Flow Mode: NONE
- UART Packet Time: 0 (0~255)ms
- UART Packet Length: 0 (0~1460)chars
- Sync Baudrate(RF2217 Similar):
- Enable Uart Heartbeat Packet:
- Work Mode: TCP Client (dropdown menu is open, showing options: None, None, ModbusTCP, **Short Connection**, ALL)
- Remote Server Addr: 172.16.11.8
- Local/Remote Port Number: 23
- Timeout Reconnection: 86400 (1~9999)s
- PRINT:
- ModbusTCP Poll: Poll Timeout: 200 (200~9999) ms
- Enable Net Heartbeat Packet:
- Registry Type: USR Cloud Location: Connect With
- Device ID: 00000428300000000045
- Communications Code: 0000usr0

Below the Socket A Parameters section is the 'Socket B Parameters' section, which is currently empty, showing only 'Work Mode: NONE'. At the bottom of the configuration area are 'Save' and 'Cancel' buttons.

Diagram 4.4.10-1 Short Connection

5. Parameters Setting

This character shows how to set USR-TCP232-E2 parameters to realize the application.

The way to set USR-TCP232-E2 including setup software, webpage setting and serial port setting.

Configuring steps:

Modify the user name and password→ setting the access way to the IP address→ serial parameter→ the related parameters for working method.

To ensure the normal using of software, the following steps are necessary

1. When using setting software to setting parameter, USR-TCP232-E2 and the PC of the setting software are in a LAN.
2. Close the antivirus software and firewall software.
3. Close the irrelevant network card.

5.1. Net Protocol Setting Parameters

5.1.1. Setup Software Setting Parameters

Click setup software and search USR-TCP232-E2, searched all USR-TCP232-E2. Display the device IP, device name, MAC and version for USR-TCP232-E2.

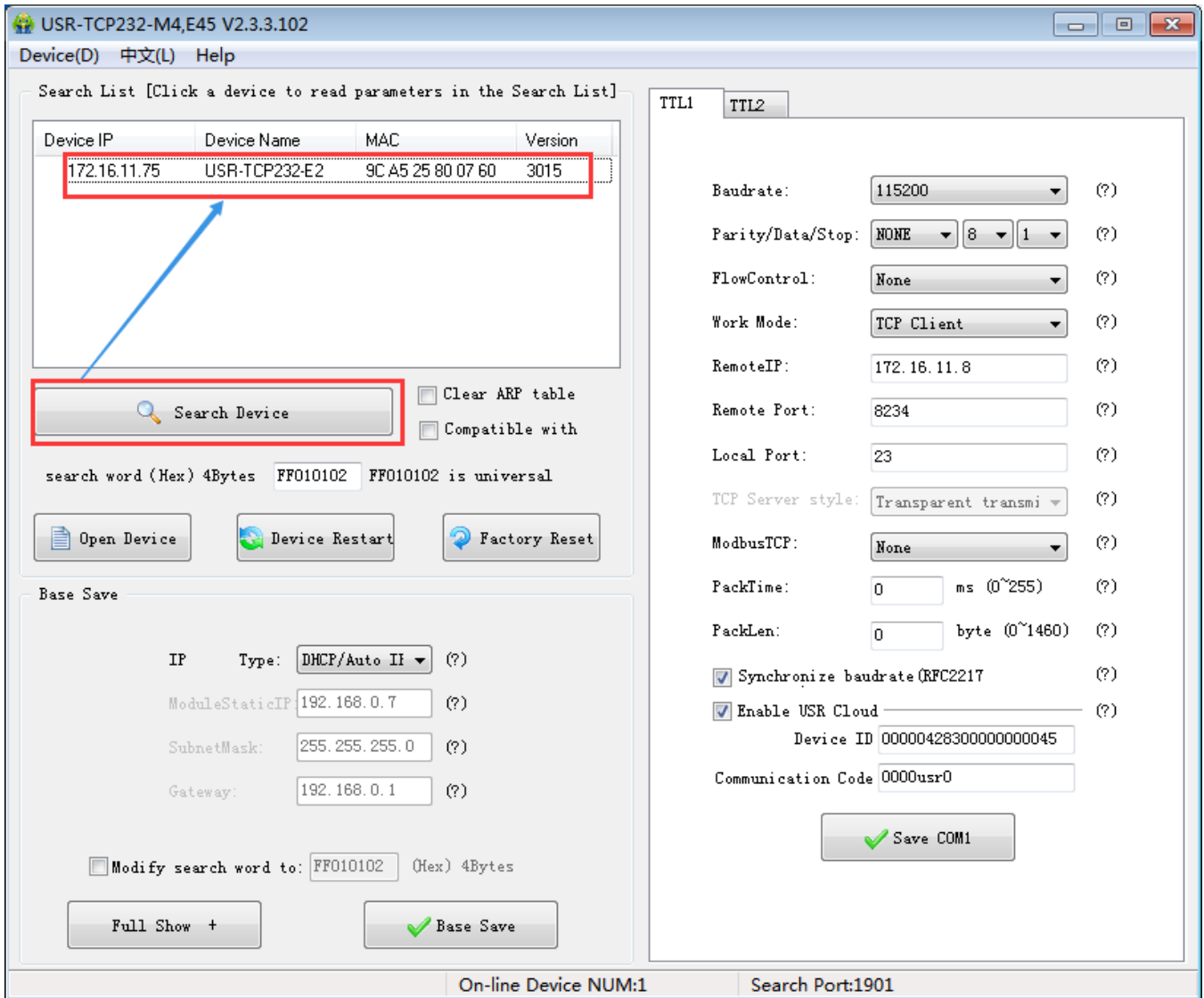


Diagram 5.1.1-1 Searching

1. Click the USR-TCP232-E2 you searched. At first you should check the password, if the password is correct, there will show the information for USR-TCP232-E2, if the password is error, software will bond out the window that you should enter the username and password, the click enter. Both default username and password are admin. All the default parameters setting and there will not bond out username and password.

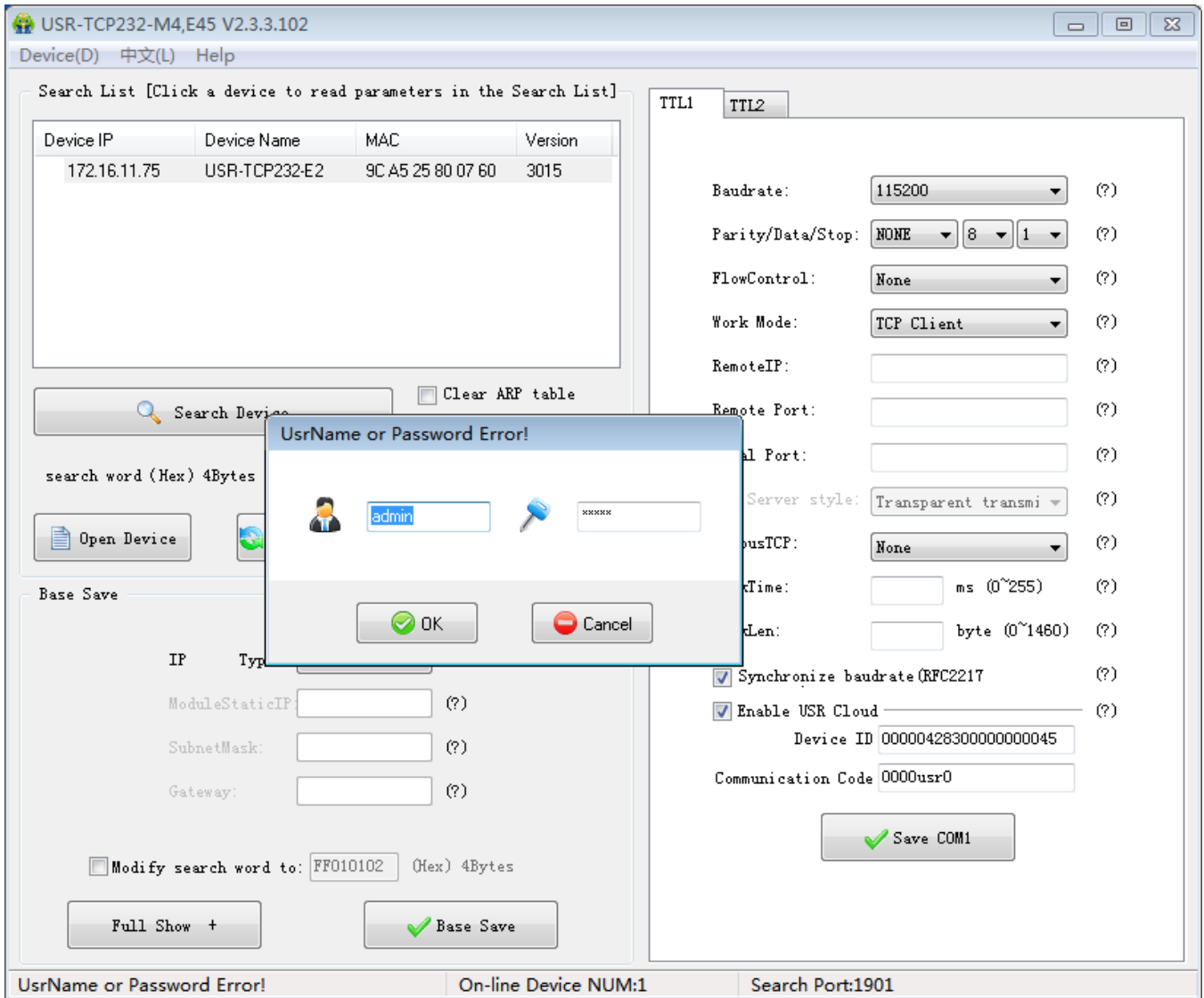


Diagram 5.1.1-2 Username and Password

2. Basic Parameters setting

Click Tidy Show and you will see all the basic parameters we can set, setting the parameters you need, and then base save, and you can save the parameters you set, keep others in default.

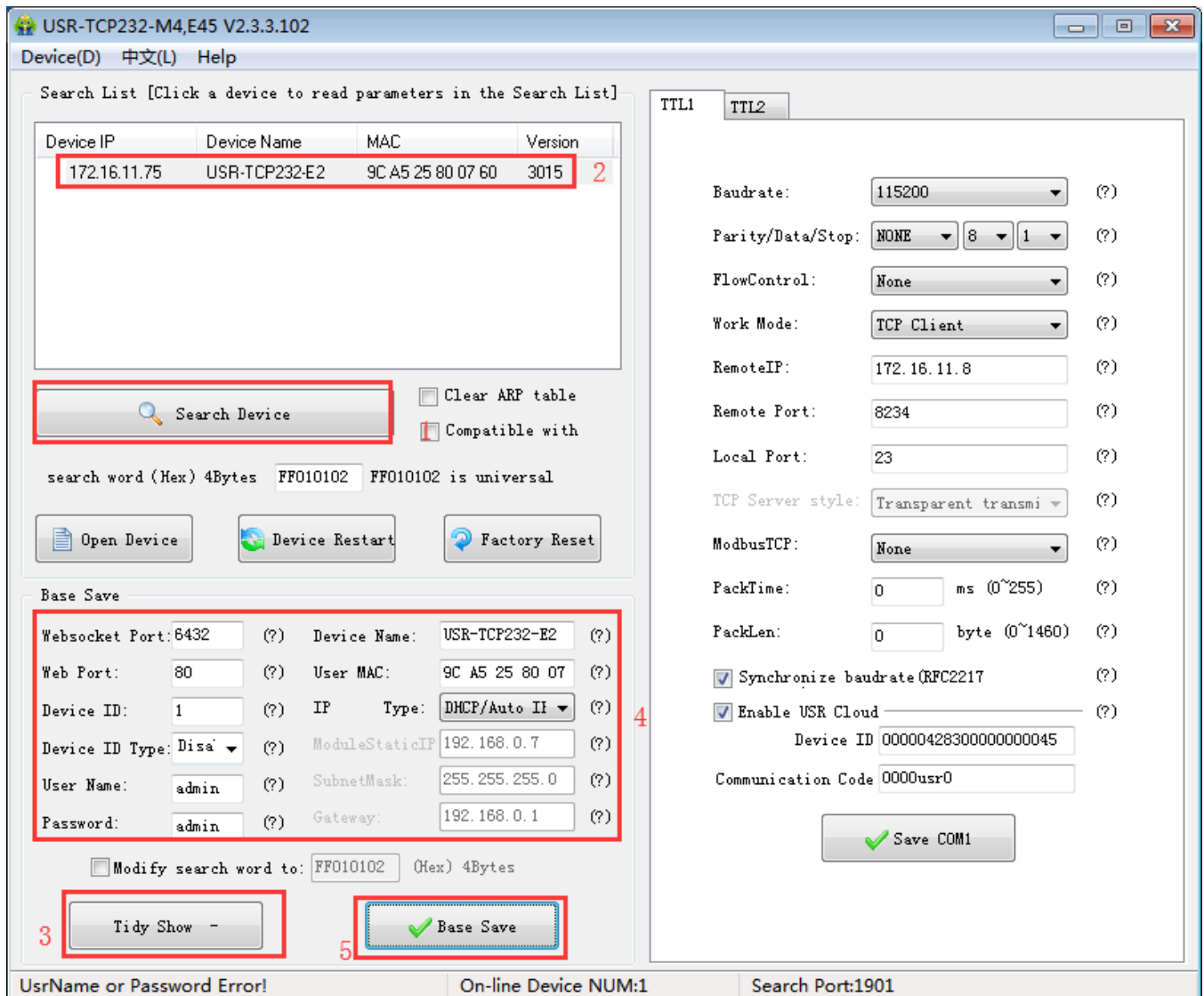


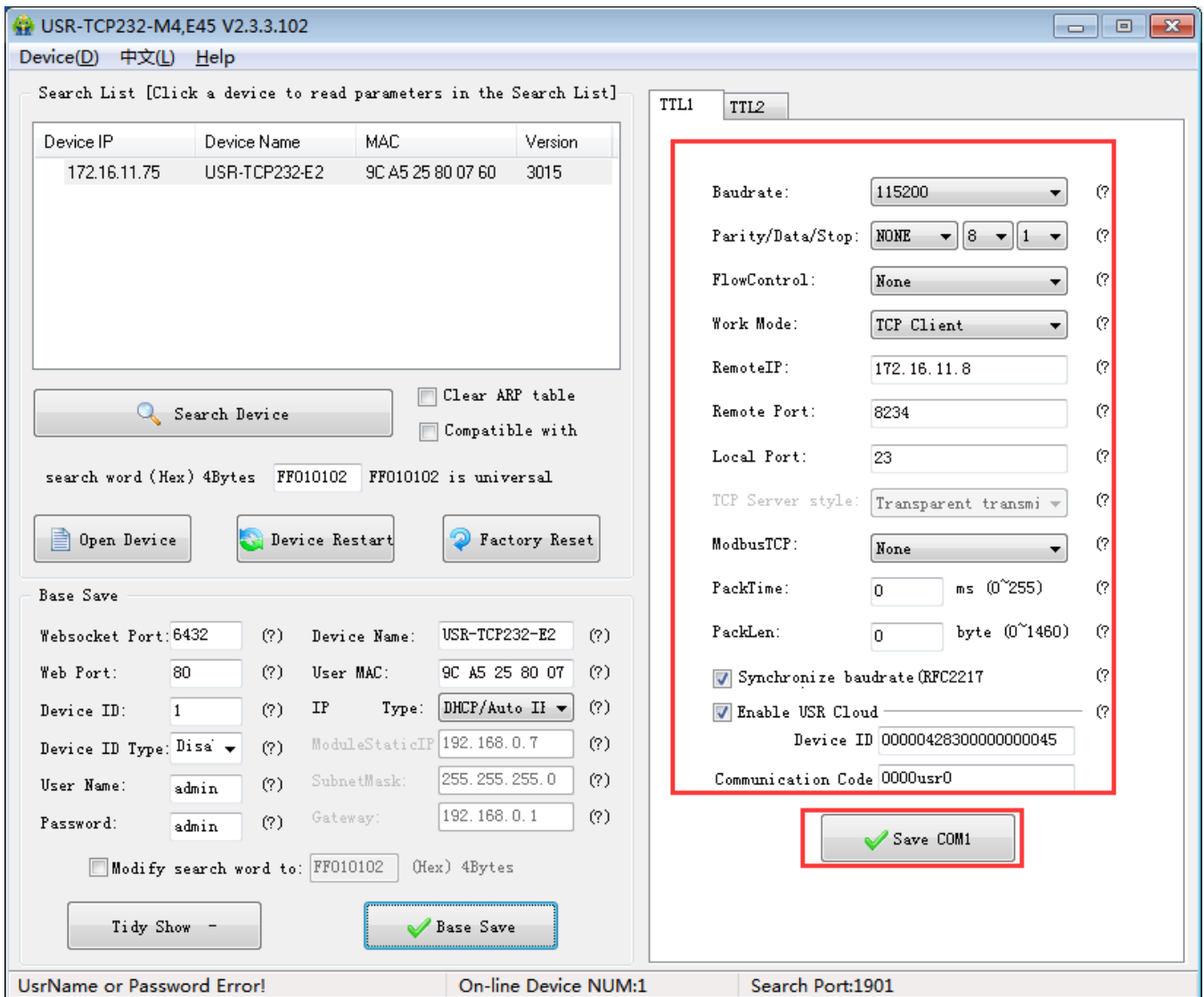
Diagram 5.1.1-3 Basic Parameters

- Websocket port: refer to the character “ webpage to serial”, this port is the webpage to serial port
- Web port: the default port to access the webpage is 80.
- Username: the username for USR-TCP232-E2 to log in, the certification code to modify the parameters which can prevent other user in the same LAN from changing USR-TCP232-E2 parameters.
- Password: as the username, the password for USR-TCP232-E2.
- Device name: default USR-TCP232-E2 and can be modify

- User MAC: the MAC address of the USR-TCP232-E2
- IP address type: static IP and DHCP
- Module static IP: the static IP for USR-TCP232-E2, keep it in the same LAN with your router.
- Subnet mask: default is 255.255.255.0
- Gateway: usually is the IP for router, setting correctly and user can communicating across the LAN and DDNS.

3. Port setting

Modify the parameters you need to setting then save them.



USR-TCP232-M4,E45 V2.3.3.102

Device(D) 中文(L) Help

Search List [Click a device to read parameters in the Search List]

Device IP	Device Name	MAC	Version
172.16.11.75	USR-TCP232-E2	9C A5 25 80 07 60	3015

Search Device Clear ARP table
 Compatible with

search word (Hex) 4Bytes FF010102 FF010102 is universal

Open Device Device Restart Factory Reset

Base Save

Websocket Port: 6432 (?) Device Name: USR-TCP232-E2 (?)
 Web Port: 80 (?) User MAC: 9C A5 25 80 07 (?)
 Device ID: 1 (?) IP Type: DHCP/Auto II (?)
 Device ID Type: Disa' (?) ModuleStaticIP: 192.168.0.7 (?)
 User Name: admin (?) SubnetMask: 255.255.255.0 (?)
 Password: admin (?) Gateway: 192.168.0.1 (?)

Modify search word to: FF010102 (Hex) 4Bytes

Tidy Show - Base Save

UsrName or Password Error! On-line Device NUM:1 Search Port:1901

TTL1 TTL2

Baudrate: 115200 ?
 Parity/Data/Stop: NONE 8 1 ?
 FlowControl: None ?
 Work Mode: TCP Client ?
 RemoteIP: 172.16.11.8 ?
 Remote Port: 8234 ?
 Local Port: 23 ?
 TCP Server style: Transparent transmi ?
 ModbusTCP: None ?
 PackTime: 0 ms (0~255) ?
 PackLen: 0 byte (0~1460) ?
 Synchronize baudrate(RFC2217) ?
 Enable USR Cloud ?
 Device ID 00000428300000000045
 Communication Code 0000usr0

Save COM1

Diagram 5.1.1-4 Serial Port Parameters

- Baud rate: serial port communication baud rate, can be the standard baud rate or customize.
- Parity/ data/ stop:serial parameters: parity:none, odd, even, mark, space; data:5,6,7,8; stop:1,2.
- Flow control: None/RS485/Hardware, Hardware means hardware flow control, none or RS485 means no flow control.
- Work mode: TCP Server /TCP Client/ Httpd Client/UDP Client/UDP Server
- Remote IP/remote port:the IP and port of server connected when USR-TCP232-E2 work as a client including TCP Client/ Httpd Client/UDP Client
- Local port: the port that USR-TCP232-E2 build connection, recommend set to be 0 when USR-TCP232-E2 work as TCP client, which means build in random connection.
- TCP server style: none
- Modbus TCP: setting when using the modbus TCP to modbus RTU
- Pack time and packlen: used in the serial port mapping
- Synchronize baud rate(RFC2217)

4. Firmware upgrade:

If the module firmware need to upgrade to the high vision,user can consult with sales to get the upgraded firmware and click the device, upgrade the vision. When you upgrade it, connect directly the device and PC and notice that PC upgrading module is forbidden.

Select the device, then choose upgrade the firmware.

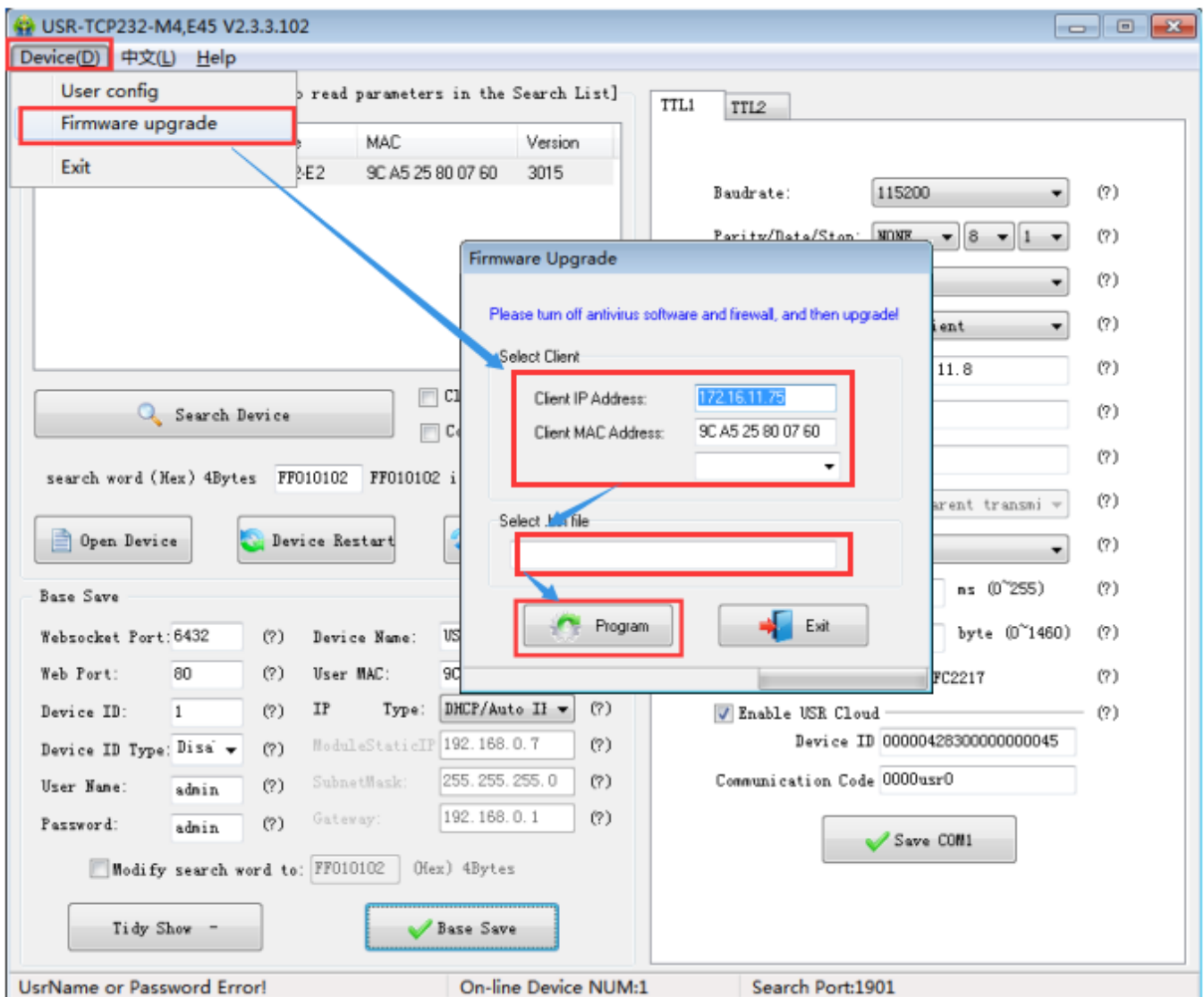


Diagram 5.1.1-5 Firmware Upgrade

5.1.2. Setting Protocol Setting Parameters

Via the protocol, you can complete: search, set, save parameters, restore. For user to make their own setup parameters.

1. Net setting parameters steps

- ① Built socket:

Build a UDP socket, remote IP :255.255.255.255, remote port:1901.

② Setting command steps

- Send searching order on the internet.
- USR-TCP232-E2 return the IP address and MAC.
- Net port read the parameters of USR-TCP232-E2.
- Combine the MAC address the username, password and the parameter that need setting to be a setting command.
- Send setting command.
- USR-TCP232-E2 return setting right.
- Upper send storage setting command.
- USR-TCP232-E2 return setting right.
- Restart command.
- The return command of USR-TCP232-E2 right (wrong).

2. Net setting command content

① Command query

function	Package head	length (order~ parameters bit)	order	MAC (6 bits)	Username and password (12 bits)	parameters	Parity (sum)
search	FF	01	01	-	-	-	02
restore	FF	xx	02	[MAC]	[username] [password]	-	xx
Read setting	FF	xx	03	[MAC]	[username] [password]	-	xx

Storage setting	FF	xx	04	[MAC]	[username] [password]	-	xx
basic setting	FF	xx	05	[MAC]	[username] [password]	basic parameters	xx
serial port 0 setting	FF	xx	06	[MAC]	[username] [password]	serial port parameters	xx
serial port 1 setting	FF	xx	07	[MAC]	[username] [password]	serial port parameters	xx
serial port 2 setting	FF	xx	08	[MAC]	[username] [password]	serial port parameters	xx
USR-cloud			0x10	[MAC]	[username] [password]		

Form 5.1.2-1 Command Query

Note: the parity is sum parity: begin at the length add to the first digit of the parity. The sum is the value to parity, and reserve the lower bits.

② Some command example

➤ Search command

Search command is: FF 01 01 02, parity sum 02 = 01 + 01.

➤ Restore command

FF 13 02 D8 B0 4C C0 0D 65 61 64 6D 69 6E 00 61 64 6D 69 6E 00 2D

parity sum:

2D = 13 + 02 + ... + 6E + 00

Note: username and password are 5 bytes+00, fill the blanks with 0

➤ Read setting command

Send (16bits): FF 13 03 D8 B0 4C C0 0D 65 61 64 6D 69 6E 00 61 64 6D 69 6E 00 2E

➤ Storage setting command

Send (16bits):FF 13 04 D8 B0 4C C0 0D 65 61 64 6D 69 6E 00 61 64 6D 69 6E 00 2F

③ detailed example for some command

➤ Basic parameter setting command

Name	bits	E.g.	Instr
Uc Sequence Num	1	xx	Fill what you read
Uc CRC	1	xx	Fill what you read
Uc Version	1	xx	Fill what you read
Uc Flags	1	80	IP address type 8 th is 0: DHCP: 1: static IP
Us Location URL Port	2	20 19	Fill what you read
Us HTTP Server Port	2	50 00	HTTP server port
Uc User Flag	1		Fill what you read
UI Static IP	4	38 00 A8 C0	Static IP
UI Gateway IP	4	01 00 A8 C0	Gateway
UI Subnet Mask	4	00 FF FF FF	Subnet Mask
Uc Mod Name	16	55 53 52 2D 54 43 50 32 33 32 2D 45 00 00 00 00	Name for USR-TCP232-E2

Username	6	61 64 6D 69 6E 00	username
password	6	61 64 6D 69 6E 00	password
Uc Net Send Time	1		Fill what you read
Ui Id	2	01 00	device ID
Uc Id Type	1	00	Device ID type(0~3) 0:no use 1:send ID when connect 2:send ID when send data 3:both
ucUserMAC	6	FF FF FF FF FF FF	Device MAC address
ucReserved	8		Unused

Form 5.1.2-2 Basic Parameter Web Setting

e.g.

FF 56 05 D8 B0 4C C0 0D 65 61 64 6D 69 6E 00 61 64 6D 69 6E 00 04 78 03 00 20 19 50 00 02 07 00 A8 C0 01 00 A8 C0 00 FF FF FF 55 53 52 2D 4B 33 00 00 00 00 00 00 00 00 00 00 61 64 6D 69 6E 00 61 64 6D 69 6E 00 02 01 00 00 D8 B0 4C C0 0D 65 10 0E 00 00 01 00 00 00 31

➤ Port parameters command details

Name	Bits	E.g.	Instr
Ul Baud Rate	4	00 C2 01 00	Serial port baud rate
Uc Data Size	1	08	Serial port data bits(0x05/0x06/0x07/0x08)
Uc Parity	1	01	Serial port parity 1: no, 2: odd, 3: even, 4: mark, 5: space

Uc Stop Bits	1	01	Serial port stop(0x01/0x02)
Uc Flow Control	1	00	Serial port flow control(0x01: no, 0x03: HW)
Uc Telnet Timeout	4	00 00 00 00	Time for net reconnection
Us Telnet Local Port	2	17 00	Local port
Us Telnet Remote Port	2	17 00	Remote port
Ui Telnet URL	30	31 39 32 2E 31 36 38 2E 30 2E 31 00 00 00 00 00 00 00 00 00 00 00 00 00 00 00 00 00 00 00	Send the IP address or domain name in ASCII code, e.g:92.168.0.1
Uc Telnet IP Addr	4	00 00 00 00	No effect, set randomly
Uc Flags	1	02	Special selection Enable modbus function: 0x010(bit2) Enable similar RFC2217 function: 0x08(bit3) Enable USR-cloud function: 0x010(bit4)
Uc Work Mode	1	03	Work mode: 0: UDP, 1: TCP Client, 2: UDP Server, 3: TCP Server, 4: HTTPD Client
uiPackLen	4	C8 00 00 00	Serial packing length
ucPackTime	1	0A	Serial packing time
ucTimeCount	1	91	Fill what you read
TCP server type	1	1	Fill what you read
ucReserved	4	random	Reserve to extend

Form 5.1.2-3 Serial Port Parameters

E.g.

```
FF 52 06 D8 B0 4C C0 0D 65 61 64 6D 69 6E 00 61 64 6D 69 6E 00 00 C2 01 00 08 01 01 01 00 00 00 00 17 00 17
00 31 39 32 2E 31 36 38 2E 30 2E 32 30 31 00 00 00 00 00 00 00 00 00 00 00 00 00 00 00 00 00 00 00 09 03 00
00 00 00 00 00 81 01 01 01 01 85
```

3. Net return the command

① The result of search command return

name	bits	E.g.	Instr
TAG_STATUS	0	FF	
Packet_length	1	24	
CMD_DISCOVER_TARGET	2	01	
Board_type	3	00	
Board_ID	4	00	
Client_IP_address	5~8	C0 A8 00 07	device IP(higher in front)
MAC_address	9~14	AC CF 23 20 FE 3D	device MAC(higher in front)
Firmware_version	15~18	D0 07 12 34	D0 07 : Firmware version(lower in front) 12 34: encryption version, others are not encrypted version; encrypted version can upgrade the encrypt program and no encrypted one should analyze the encryption then send.
Application_title	19~34	55 53 52 2D 54 43 50 32 33 32 2D 35 30 30 00 00	device name
checksum	35	F0	(this value can be ignore) Check sum initial value is 0x00, reduce every bits of TAG_STATUS in order,till the last bit, and the result is

			checksum.
--	--	--	-----------

Form 5.1.2-7 Return Command

e.g.

search command returned result(36 bytes):

FF 24 01 00 00 C0 A8 01 6B D8 B0 4C C0 0D 65 C3 0B 01 00 55 53 52 2D 4B 33 00 00 00 00 00 00 00 00 8E

Parity is minus the sum parity, original value is 0x00, then minus every bytes one by one as below:

0x8E = 00 - FF - 24 - 01 - 00 - 4B - ... - 31 - 00 - 00

② Restart command return result

Respond (4 bits): FF 01 02 4B if the password right 4B = 'K'

FF 01 02 45 username password wrong 45 = 'E'

③ Read order command return result

Return all the parameters of USR-TCP232-E2 net, totally 180 bytes without parity

No protocol and return directly

Returned content:180 bytes(basic parameters + serial parameters+ USR-cloud)

④ Storage setting command return result

Correct:

FF 01 04 4B

⑤ Other return

Parity and return: return 'E' + right value:

Correct perform: FF 01 CMD'K':

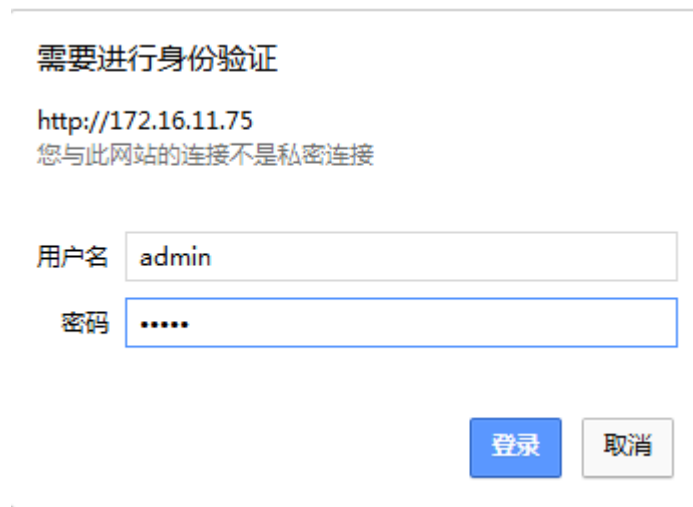
Username password wrong return: FF 01 CMD'P':

Other wrong return: FF 01 CMD'E'.

5.2. Webpage Setting Parameters

Open the browser and enter the IP of USR-TCP232-E2,(default is 192.168.0.7) and user can open the USR-TCP232-E2 login windows. Enter

:admin, password:admin, then click enter and enter the webpage.



需要进行身份验证

http://172.16.11.75
您与此网站的连接不是私密连接

用户名

密码

Diagram 5.2-1 Username and Password

Click the English on the right up, change the language.


Version : v3015		中文
 USR IOT -IOT Experts- <i>Be Honest, Do Best!</i>		
Current Status	parameter	help
Local IP Config	Module Name: USR-TCP232-E2	<ul style="list-style-type: none"> • Run time: run time means the minutes since latest reboot • TX/RX Count: TX/RX count give us a calculation of the total byte we have been received or send.
TTL1	Firmware Revision: 3015	
TTL2	Current IP Address: 172.16.11.75	
Web to Serial	MAC Address: 9c-a5-25-80-07-60	
Misc Config	Run Time: 0day: 0hour: 0min	
Reboot	TX Count(ETH) : 0/0/0 bytes	
	RX Count(ETH) : 0/0/0 bytes	
	Conn Status(ETH)A: ERROR/LISTEN/LISTEN	
	Conn Status(ETH)B: IDLE/IDLE/IDLE	

Diagram 5.2-2 Language

Note: default is English.

1. Current status webpage

- Module name: default is USR-TCP232-E2
- Firmware revision: the current version is 3016
- Current IP address: default is static IP(192.168.0.7),here using DHCP to connect the PC.
- NAC address
- Run time: count time from power on.
- TX count(ETH): the send number of the data from power on.
- RX count(ETH):the received number of the data from power on.
- Conn status(ETH): using in the debugging, check the connection.

2. Local IP config

Current Status	parameter
Local IP Config	IP Type: <input type="text" value="DHCP/AutoIP"/>
TTL1	Static IP: <input type="text" value="192"/> . <input type="text" value="168"/> . <input type="text" value="0"/> . <input type="text" value="7"/>
TTL2	Submask: <input type="text" value="255"/> . <input type="text" value="255"/> . <input type="text" value="255"/> . <input type="text" value="0"/>
Web to Serial	Gateway: <input type="text" value="192"/> . <input type="text" value="168"/> . <input type="text" value="0"/> . <input type="text" value="1"/>
Misc Config	Dns Server: <input type="text" value="208"/> . <input type="text" value="67"/> . <input type="text" value="222"/> . <input type="text" value="222"/>
Reboot	<div style="text-align: center;"> <input type="button" value="Save"/> <input type="button" value="Cancel"/> </div>

Diagram 5.2-3 local IP

- IP type: DHCP or static IP
- Static IP
- Sub mask:subnet mask
- Gateway:gateway address

3. TTL1

Current Status	Parameter
Local IP Config	Baud Rate: <input type="text" value="115200"/> bps(600~230400)bps
TTL1	Data Size: <input type="text" value="8"/> bit
TTL2	Parity: <input type="text" value="None"/>
Web to Serial	Stop Bits: <input type="text" value="1"/> bit
Misc Config	Flow Mode: <input type="text" value="NONE"/>
Reboot	UART Packet Time: <input type="text" value="0"/> (0~255)ms
	UART Packet Length: <input type="text" value="0"/> (0~1460)chars
	Sync Baudrate(RF2217 Similar): <input checked="" type="checkbox"/>
	Enable Uart Heartbeat Packet: <input type="checkbox"/>
	Socket A Parameters
	Work Mode: <input type="text" value="TCP Client"/> <input type="text" value="None"/>
	Remote Server Addr: <input type="text" value="172.16.11.8"/> [172.16.11.8]
	Local/Remote Port Number: <input type="text" value="23"/> <input type="text" value="8234"/> (1~65535)
	Timeout Reconnection : <input type="text" value="86400"/> (1~99999)s
	PRINT: <input type="checkbox"/>
	ModbusTCP Poll: <input type="checkbox"/> Poll Timeout : <input type="text" value="200"/> (200~9999) ms
	Enable Net Heartbeat Packet: <input type="checkbox"/>
	Registry Type: <input type="text" value="None"/> Location <input type="text" value="Connect With"/>
	Socket B Parameters
	Work Mode: <input type="text" value="NONE"/>

Diagram 5.2-4 Port 1 Parameters Configuring

- Baud rate
- Data
- Parity
- Stop bits
- Flow mode: none/ hardware
- Port mapping: UART packet time and length can be set here

- Similar RFC2217
- Enable UART heartbeat package
- Work mode: TCP server,TCP client, UDP server,UDP client, HTTPD client
- Remote server address
- Local/ remote port number
- Print:net printing function,default disable

4. Web to serial



Diagram 5.2-5 Webpage to Serial

5. Misc Config

Current Status	parameter
Local IP Config	Module Name: <input type="text" value="USR-TCP232-E2"/>
TTL1	Websocket Port : <input type="text" value="6432"/>
TTL2	Webserver Port: <input type="text" value="80"/>
Web to Serial	MAC Address: <input type="text" value="9c-a5-25-80-07-60"/>
Misc Config	User Name: <input type="text" value="admin"/>
Reboot	Pass Word: <input type="text" value="admin"/>
	Buffer Data Before Connected: <input type="checkbox"/>
	Reset Timeout: <input type="text" value="3600"/> (60~65535) s
	<input type="button" value="Save"/> <input type="button" value="Cancel"/>

Diagram 5.2-6 Misc Config

- Module name:default:USR-TCP232-E2 and can be change
- Websocket port
- Net port
- MAC address(can be modify)
- Username
- Password
- Buffer data before connected: whether to clear the buffer data.
- Reset timeout: after set time interval, serial or net have not receive the data, USR-TCP232-E2 will reset, and 0 means this function disable.

6. Reboot

Current Status	Reboot/Reset	
Local IP Config	Restart Module	Restart Module
TTL1		
TTL2		
Web to Serial		
Misc Config		
Reboot		

Diagram 5.2-7 Reboot

Save all the parameters and click restart module to work.

5.3. AT Command

5.3.1. Net AT Command

Net AT command, the command collection that delivery via net port and module under the command mode, details are like the serial port command.

Net AT command mode: keep the module and PC in the same LAN, and the user can setting via AT command.

Send www.usr.cn via UDP, if the module and PC in the same LAN, PC will receive the return data from USR-TCP232-E2, which means module have enter the net AT command and can configure it.

Under AT command mode, if there is no command for 30s, USR-TCP232-E2 will exit the AT command.

5.3.2. Serial AT Command

AT+ command is the command collection that perform the command transport using UART and module under the order mode. Later we will interpret the type in detail.

Powered successfully, we can setting the module with UART.

The default UART port parameters of the module are: baud rate1152000, no parity, data 8 and stop 1.

Instr

AT command test tools. UART interface command to use secureCRT software tool or USR pro APP. Below are using the secureCRT with UART to perform.

From transparent transport to order mode need two step as below:

- Fill “+++” in the UART. After the module receive the “+++”, it will send a “a” to confirm;
- Fill the confirming “a” in the UART, after the module receive and send “+ok”, enter the command mode.

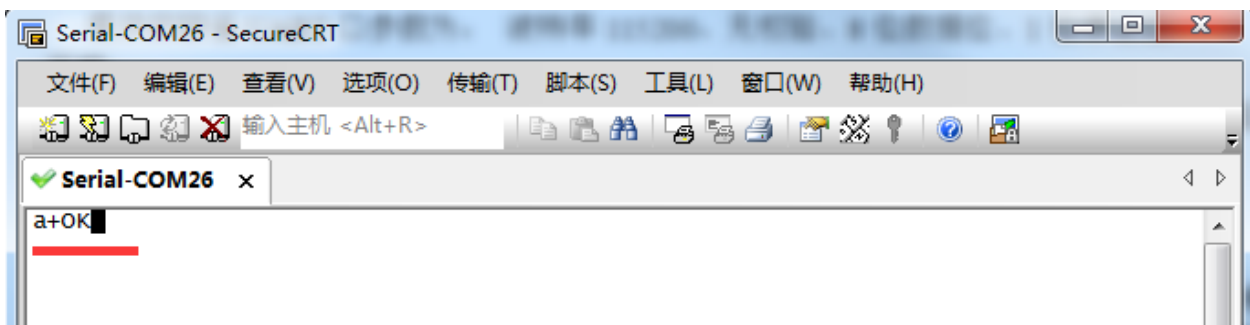


Diagram 5.3.1-1 Enter the AT Command

Instr: if no feedback after fill “+++” and “a”, as the above.

Fill “+++” and “a” need to achieve in the time to reduce the chance of entering command mode while working normally accidentally. Detail requirement are as follows.

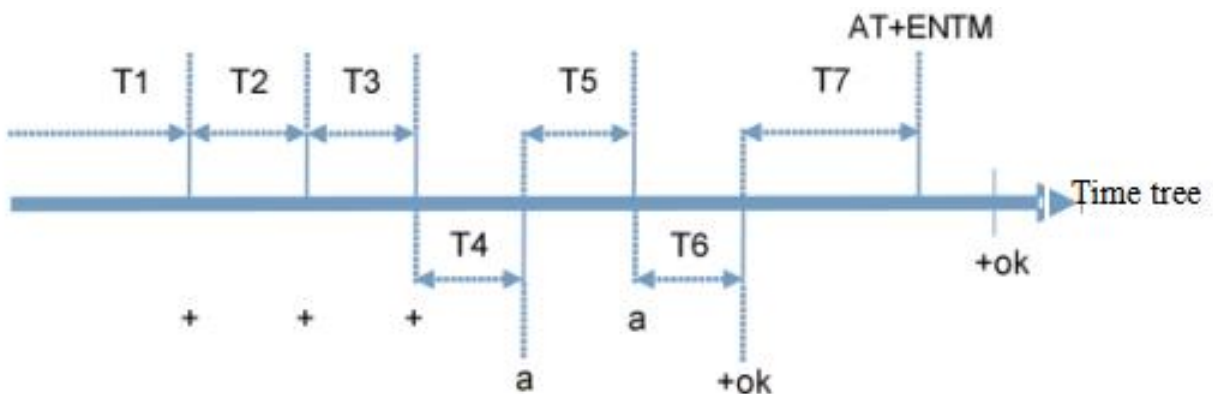


Diagram 5.3.1-2 Time Tree

Time requirement:

T1>the interval of serial port package

T2<300ms

T3<300ms

T5<3s

The order change into temporary command mode from transparent transport mode:

1. Serial mode device send “+++”to module continuously. The module receive and send “a” back. Before sending“+++”is the packaging time and can not send any data.
2. After receive “a” feedback a “a”in 3s.
3. After the module receive “a, send “ok”to the device, and enter “AT”command
4. After the device receive “+ok” and know the module enter the AT command mode, then send AT command.

The order change into net transparent transport from AT command mode:

- 1.Serial device send “AT+ENTM”to module.
- 2.After the module receive the command, feedback “+ok”, then back to the previous working mode.

5.3.3. Error AT Command

Error code	Instr
-1	Invalid format
-2	Invalid order
-3	Invalid operator
-4	Invalid parameter
-5	Not allow

Form 5.3.3-1 Error Code List

5.3.4. AT Command

Num	command	Instr
1	E	Enable/disable the echo function
2	Z	restart module
3	VER	Query the version
4	ENTM	Exit AT command mode and enter the transparent transmission
5	MAC	Query module MAC address
6	RELD	Reset default settings
7	WANN	Setting/ query WAN port parameters
8	DNS	Setting/ query DNS server address
7	USERMAC	Setting customize MAC
9	WEBU	Setting/ query username and password
10	WEBPORT	Setting/ query webpage port
11	SEARCH	Setting/query search key word
12	PLANG	Setting/query webpage language
13	UARTN	Setting/ query serial port N parameters
14	UARTTLN	Setting/ query serial port N packing parameters
15	SOCKMN	Setting/ query N serial port socket M parameters
16	SOCKLMN	Query the connection status
17	WEBSOCKET1	Setting/ query websocket port number
18	REGENN	Setting/ query registration package N type

19	REGTCPN	Setting/ query registration package N position
20	REGUSRN	Setting/ query the content of registration package that customized, support ASCII
21	REGCLOUDN	Setting/ query USR-cloud parameters
22	HTPTPN	Setting/ query in httpd client mode, the asking way of the http
23	HTPURLN	Setting/ query the URL in httpd client mode
24	HTPHEADN	Setting/ query the package head in httpd client
25	HTPCHDN	Setting/ query HTP remove the package head
26	HEARTENN	Setting/ query heartbeat package enable
27	HEARTTPN	Setting/ query method of the heartbeat package send
28	HEARTTMN	Setting/ query the heartbeat package time
29	HEARTDTN	Setting/ query customize heartbeat package, supports ASCII
30	PDTIME	Query the product time
31	MID	Setting/ query module name
32	USERMAC	Setting customize MAC
33	RECENN	Setting/ query RFC2217 enable
34	SOCKSLN	Setting/ query short connection function
35	SHORTON	Setting/ query short connection time
36	RSTIM	Setting/ query timeout reset time
37	UARTCLBUF	Setting/ query clear serial port cache before module build connection function enable/disable
38	SOCKTONN	Setting/query timeout reconnection time

39	MODTCPN	Setting/query modbus TCP function
40	MODPOLLN	Setting/query modbus polling function
41	MODTON	Setting/query modbus polling time
42	NETPRN	Setting/query net printing function
43	UDPONN	Setting/query not detect the remote IP and port under UDP mode
44	CFGTF	Setting current parameters saved to be the default parameters
45	PINGN	Setting ping function remote IP and have a ping
46	HEARTUSERN	Setting/query port N customize heartbeat package, supports ASCII and HEX
47	REGUSERN	Setting/query port N customize registration package, supports ASCII and HEX

Form 5.3.4-1 AT Command

5.3.5. AT Command Details

1. AT+E

- Function: setting/query module AT command echo setting

- Format:

- ◆ query

AT+E <CR>

<CR><LF>+OK=<on/off><CR><LF>

- ◆ setting

AT+E=<on/off><CR>

<CR><LF>+OK<CR><LF>

- Parameters:

- ◆ On: enable echo, echo the enter command under AT command
- ◆ Off: under the AT command, enter command do not echo

E.g. : AT+E=ON

2. AT+Z

- Function: restart module
- Format:
 - ◆ setting

AT+Z<CR>

<CR><LF>+OK<CR><LF>

Parameters: none

Note: perform this function, module restart

3. AT+VER

- Function: setting/query module firmware version
- Format:
 - ◆ query

AT+VER<CR>

<CR><LF>+OK=<ver><CR><LF>

- Parameters:
 - ◆ ver:setting/query module firmware version

4. AT+ENTM

- Function: exit AT command mode and enter the transparent transmission
- Format:

- ◆ setting

AT+ENTM<CR>

<CR><LF>+OK<CR><LF>

- Parameters: none

Perform this function, module enter the transparent transmission from AT command mode

5. AT+MAC

- Function: query module MAC

- Format:

- ◆ query

AT+MAC<CR>

<CR><LF>+OK=<mac><CR><LF>

- Parameters:

- ◆ mac: MAC of the module(for example 01020304050A);

6. AT+RELD

- Function: restore module setting to default factory setting

- Format:

- ◆ setting

AT+RELD<CR>

<CR><LF>+OK<CR><LF>

- Parameters: none

7. AT+WANN

- Function: setting/query IP(DHCP/STATIC)of the WAN that module accessed;

➤ Format:

◆ query

```
AT+WANN<CR>
```

```
<CR><LF>+OK=<mode,address,mask,gateway><CR><LF>
```

◆ setting

```
AT+WANN=<mode,address,mask,gateway><CR>
```

```
<CR><LF>+OK<CR><LF>
```

➤ Parameters:

◆ mode: mode of the net IP

- static: static IP
- DHCP: automatically IP(address,mask,gateway please ignore them)

◆ address: IP address

◆ mask: subnet masks

◆ gateway: gateway address

E.g. : AT+WANN=static,192.168.0.7,255.255.255.0,192.168.0.1

8. AT+DNS

➤ Function: setting/query the server address of the DNS

➤ Format:

◆ query

```
AT+DNS<CR>
```

```
<CR><LF>+OK=< address ><CR><LF>
```

◆ setting

AT+DNS=< address ><CR>

<CR><LF>+OK<CR><LF>

➤ Parameters:

- ◆ address: DNS server address

E.g. : AT+DNS=208.67.222.222

9. AT+WEBU

➤ Function: setting/query login username and password

➤ Format:

- ◆ query

AT+WEBU<CR>

<CR><LF>+OK=<username,password><CR><LF>

- ◆ setting

AT+WEBU<CR>

<CR><LF>+OK =<username,password><CR><LF>

➤ Parameters:

- ◆ username: username, at most for 5 bytes, please be sure no black
- ◆ password: pass word, at most for 5 bytes

E.g. : AT+WEBU=admin,admin

10. AT+WEBPORT

➤ Function: setting/query the port of the module Web Server ;

➤ Format:

- ◆ query

AT+WEBPORT<CR>

<CR><LF>+OK=<port><CR><LF>

- ◆ setting

AT+WEBPORT<CR>

<CR><LF>+OK =<port><CR><LF>

- Parameters:

- ◆ port: the port of the build-in webserver of module, default is 80.

E.g. : AT+WEBPORT=80

11. AT+SEARCH

- Function: setting/query the searching port and keyword of the module in LAN

- Format:

- ◆ query

AT+SEARCH<CR>

<CR><LF>+OK=<port,keywords><CR><LF>

- ◆ setting

AT+SEARCH =<port,keywords><CR><LF>

<CR><LF>+OK<CR><LF>

- Parameters:

- ◆ port: search port of the module; default: 48899
- ◆ keywords: searching keyword of the module.default: www.usr.cn (at most for 20 bytes length)

E.g. : AT+SEARCH=48899, www.usr.cn

12. AT+PLANG

➤ Function: setting/query module net language version for login webpage.

➤ Format:

◆ query

```
AT+ PLANG <CR>
```

```
<CR><LF>+OK=<language><CR><LF>
```

◆ setting

```
AT+PLANG =<language><CR>
```

```
<CR><LF>+OK<CR><LF>
```

➤ Parameters:

◆ language:

- cn: default for Chinese
- en: default for English

E.g. : AT+PLANG=CN

13. AT+UARTN

➤ (N: the number of the port, 1~8. for single port socket, ignore the N)

➤ Function: setting/query UARTN interface parameters

➤ Format:

◆ query :

```
AT+UARTN<CR>
```

```
<CR><LF>+OK=<baudrate,data_bits,stop_bit,parity,flowctrl ><CR><LF>
```

◆ setting :

```
AT+UARTN=<baudrate,data_bits,stop_bit,parity,flowctrl ><CR><LF>
```

```
<CR><LF>+OK<CR><LF>
```

➤ Parameters:

- ◆ baudrate: baud rate
 - 9600,19200,38400,57600,115200,230400,380400,460800(details according to module customize, module can supports random baud rate.)
- ◆ data_bits: data: 5、 6、 7、 8
- ◆ stop_bits: stop 1、 2(details refer to the module supporting
- ◆ parity: parity
 - NONE
 - EVEN
 - ODD
 - MARK
 - SPACE
- ◆ flowctrl: hardware flow control(CTS RTS)
 - NFC: no hardware flow control
 - FCH: hardware flow control
 - FCR: software flow control

E.g. : AT+UART=115200,8,1,NONE,NFC

14. AT+UARTLN

- (N: the number of the port, 1~8. for single port socket, ignore the N)
- Function: setting/query the customize Packaging mechanism
- Format:

◆ query

```
AT+ UARTTLN<CR>
```

```
<CR><LF>+OK=<time,length><CR><LF>
```

◆ setting

```
AT+ UARTTLN=<time,length> <CR>
```

```
<CR><LF>+OK<CR><LF>
```

➤ Parameters:

◆ time: bytes interval: 0~255 ms; .

◆ length: longest bytes for data package:0~1460 byte.

E.g. : AT+UARTTL1=0,0

15. AT+SOCKMN

➤ (M: the port number of the socket, A~H. N: serial port number, 1~8. single socket please ignore the MN)

➤ Function: setting/query web protocol parameters

➤ Format:

◆ query

```
AT+SOCKMN<CR>
```

```
<CR><LF>+OK=<protocol,IP,port ><CR><LF>
```

◆ setting

```
AT+SOCKMN=< protocol,IP,port ><CR>
```

```
<CR><LF>+OK<CR><LF>
```

➤ Parameters:

◆ Protocol: protocol type

- TCPS TCP server
 - TCPC TCP Client
 - UDPS UDP server
 - UDPC UDP client
 - HTPC Httpd client
- ◆ IP: if the module work in client mode, the IP address is server IP.
 - ◆ Port: protocol port, The decimal system, less than 65535

E.g. : AT+SOCKA1=TCPC,192.168.0.201,8234

16. AT+SOCKLKMN

- (M: the port number of the socket, A~H. N: serial port number, 1~8. single socket please ignore the MN)
- Function: query if there is TCP connection
 - ◆ query

```
AT+ SOCKLKMN<CR>  
  
<CR><LF>+OK=<sta><CR><LF>
```

- Parameters:
 - ◆ sta.: please refer to [2.2.3 Web Server](#)

17. AT+WEBSOCKPORT1

- Function: setting/query port number Websocket
- Format:
 - ◆ query

```
AT+ WEBSOCKPORT1<CR>  
  
<CR><LF>+OK=<port><CR><LF>
```

- ◆ setting

AT+WEBSOCKET1=<port> <CR>

<CR><LF>+OK<CR><LF>

- Parameters:

- ◆ Port: the port listened by Websocket

E.g. : AT+WEBSOCKET1=123

18. AT+REGENN

- (N: the number of the port, 1~8. for single port socket, ignore the N)

- Function: setting query registration package mechanism

- Format:

- ◆ query

AT+REGENN <CR>

<CR><LF>+OK=<status><CR><LF>

- ◆ setting

AT+REGENN =<status><CR>

<CR><LF>+OK<CR><LF>

- Parameters:

- ◆ status:

- USR: user defined registration package, at most for 20 bytes
- MAC: MAC do as a registration package
- CLOUD: disable registration function
- OFF: disable registration function

E.g. : AT+REGEN1=USR

19. AT+REGTCPN

- (N: the number of the port, 1~8. for single port socket, ignore the N)
- Function: setting query under TCP client mode, registration package perform mechanism

➤ Format:

- ◆ query

```
AT+REGTCPN<CR>  
  
<CR><LF>+OK=< status><CR><LF>
```

- ◆ setting

```
AT+REGTCPN =< status><CR>  
  
<CR><LF>+OK<CR><LF>
```

➤ Parameters:

- ◆ status:

- First: send registration st first time
- Every: data carry registration package
- ALL: both

E.g. : AT+REGTCP1=all

20. AT+REGUSRN

- (N: the number of the port, 1~8. for single port socket, ignore the N)
- Function: setting/query content of the defined registration package

➤ Format:

- ◆ query

AT+ REGUSRN<CR>

<CR><LF>+OK=<data><CR><LF>

- ◆ setting

AT+ REGUSRN =<data><CR>

<CR><LF>+OK<CR><LF>

- Parameters:

- ◆ data: registration content, at most for 40 bytes

E.g. : AT+REGUSR1=12345

21. AT+REGCLOUDN

- (N: the number of the port, 1~8. for single port socket, ignore the N)
- Function: setting/query the device ID and password of the USR-cloud
- Format:

- ◆ query

AT+REGCLOUDN<CR>

<CR><LF>+OK=<ID,CODE><CR><LF>

- ◆ setting

AT+REGCLOUDN=<ID,CODE><CR>

<CR><LF>+OK<CR><LF>

- Parameters:

- ◆ ID: device ID
- ◆ CODE: communication password

E.g. : AT+REGCLOUD1=12345678901234567890, 12345786

22. AT+HTPTPN

- (N: the number of the port, 1~8. for single port socket, ignore the N)
- Function: setting/query the questing way under the HTTPD Client mode
- Format:

- ◆ query

```
AT+HTPTPN<CR>
```

```
<CR><LF>+OK=< status><CR><LF>
```

- ◆ setting

```
AT+HTPTPN=< status><CR>
```

```
<CR><LF>+OK<CR><LF>
```

- Parameters:

- ◆ status:

- GET
- POST

E.g. : AT+HTPTP1=GET

23. AT+HTPURLN

- (N: the number of the port, 1~8. for single port socket, ignore the N)
- Function: setting/query HTTPD Client 的 URL.
- Format:

- ◆ query

```
AT+HTPURLN<CR>
```

```
<CR><LF>+OK=<URL><CR><LF>
```


- ◆ setting

AT+HTPURLN =<URL><CR>

<CR><LF>+OK<CR><LF>

- Parameters:

- ◆ URL: under the HTTPD Client, URL of the GET or POST

E.g. : AT+HTPURL1=1/PHP

24. AT+HTPHEADN

- (N: the number of the port, 1~8. for single port socket, ignore the N)

- Function: setting/query the header of the HTTP protocol

- Format:

- ◆ query

AT+HTPHEADN<CR>

<CR><LF>+OK =<string><CR><LF>

- ◆ setting

AT+HTPHEADN =<string><CR>

<CR><LF>+OK<CR><LF>

- Parameters:

- ◆ string: the defined header information, at most for 180 bytes

Note: every enter using the <<CRLR>> to instead

There is a <<CRLF>> fellow the HTTPD, how many HTTPD and how many <<CRLF>>.

E.g. : AT+HTPHEAD=Accept:text<<CRLF>>

25. AT+HTPCHDN

- (N: the number of the port, 1~8. for single port socket, ignore the N)
- Function: setting/query filter the header of the HTTP return information.
- Format:

- ◆ query :

```
AT+ HTPCHDN <CR>  
  
<CR><LF>+OK=<sta><CR><LF>
```

- ◆ setting :

```
AT+ HTPCHDN =<sta><CR>  
  
<CR><LF>+OK<CR><LF>
```

- Parameters: Sta:

- ◆ ON: enable
- ◆ OFF: disable

E.g. :AT+HTPCHD1=ON

26. AT+HEARTENN

- (N: the number of the port, 1~8. for single port socket, ignore the N)
- Function: setting/query enable heartbeat package or not
- Format:

- ◆ query :

```
AT+ HEARTENN <CR>  
  
<CR><LF>+OK=< status><CR><LF>
```

- ◆ setting :

AT+ HEARTENN =< status><CR>

<CR><LF>+OK<CR><LF>

➤ Parameters:

◆ status:

- ON:enable heartbeat package
- Off: disable heartbeat package

E.g. : AT+HEARTEN1=ON

27. AT+HEARTTPN

➤ (N: the number of the port, 1~8. for single port socket, ignore the N)

➤ Function: setting/query heartbeat package send method

➤ Format:

◆ query :

AT+ HEARTTP <CR>

<CR><LF>+OK=< type><CR><LF>

◆ setting :

AT+ HEARTTP =< type ><CR>

<CR><LF>+OK<CR><LF>

➤ Parameters:

➤ status:

- NET: send heartbeat package to net
- COM: send heartbeat package to serial

E.g. : AT+HEARTTP=NET

28. AT+HEARTTMN

- (N: the number of the port, 1~8. for single port socket, ignore the N)
- Function: setting/query heartbeat package time
- Format:

- ◆ query :

```
AT+ HEARTTM <CR>  
  
<CR><LF>+OK=< time><CR><LF>
```

- ◆ setting :

```
AT+ HEARTTM =< time><CR>  
  
<CR><LF>+OK<CR><LF>
```

- Parameters:

- ◆ Time: default 30s, range from 1 to 65535s.

E.g. : AT+HEARTTM=30

29. AT+HEARTDTN

- (N: the number of the port, 1~8. for single port socket, ignore the N)
- Function: setting query the content of the defined heartbeat package
- Format:

- ◆ query :

```
AT+ HEARTDT <CR>  
  
<CR><LF>+OK=< data><CR><LF>
```

- ◆ setting :

```
AT+ HEARTDT =< data><CR>
```

<CR><LF>+OK<CR><LF>

➤ Parameters:

- ◆ data: ASCII code in 40 bytes

E.g. :AT+HEARTDT=www.usr.cn.

30. AT+PDTIME

➤ Function: query product time

➤ Format:

- ◆ query :

AT+PDTIME<CR>

<CR><LF>+OK=<time><CR><LF>

➤ Parameters:

- ◆ Time: product time, e.g. 2016-10-18 11:20:02

31. AT+MID

➤ Function: setting/query module name

➤ Format:

- ◆ query :

AT+ MID <CR>

<CR><LF>+OK=< name ><CR><LF>

- ◆ setting :

AT+ MID =< name ><CR>

<CR><LF>+OK<CR><LF>

➤ Parameters:

- ◆ name: module name, at most for 15 bytes, please be not blank

E.g. :AT+ MID =USR- tcp232-410 s

32. AT+USERMAC

➤ Function: setting defined mac

➤ Format:

- ◆ setting :

AT+ USERMAC =< MAC ><CR>

<CR><LF>+OK<CR><LF>

➤ Parameters:

- ◆ MAC: MAC address of the module (e.g. 002233445566)

E.g.: AT+USERMAC=002233445566

33. AT+RFCENN

➤ (N: the number of the port, 1~8. for single port socket, ignore the N)

➤ Function: query /setting enable RFC2217

➤ Format:

- ◆ query :

AT+RFCENN<CR>

<CR><LF>+OK=<status><CR><LF>

- ◆ setting :

AT+ RFCENN =<status><CR>

<CR><LF>+OK<CR><LF>

➤ Parameters:

- ◆ ON: enable RFC2217
- ◆ OFF: disable RFC2217

E.g. : AT+RFCEN=ON

34. AT +SOCKSLN

➤ (N: the number of the port, 1~8. for single port socket, ignore the N)

➤ Function: query /setting short connection function

➤ Format:

◆ query :

AT+ SOCKSLN <CR>

<CR><LF>+OK=<sta><CR><LF>

◆ setting :

AT+ SOCKSLN =<sta><CR>

<CR><LF>+OK<CR><LF>

➤ Parameters:

- ◆ sta: status
- ◆ ON:enable the short connection function
- ◆ OFF: disable the short connection function

E.g. : AT+ SOCKSL =ON

35. AT+ SHORTON

- (N: the number of the port, 1~8. for single port socket, ignore the N)
- Function: query /setting short connection time
- Format:

- ◆ query :

```
AT+ SHORTON <CR>  
  
<CR><LF>+OK=<time><CR><LF>
```

- ◆ setting :

```
AT+ SHORTON =<time><CR>  
  
<CR><LF>+OK<CR><LF>
```

- Parameters:

- ◆ time: short connection time 2-255s

e.g.: AT+ SHORTO =3

36. AT+RSTIM

- Function: setting/query timeout restart
- Format:

- ◆ query :

```
AT+ RSTIM <CR>  
  
<CR><LF>+OK=<time><CR><LF>
```

- ◆ setting :

```
AT+ RSTIM =<time><CR>  
  
<CR><LF>+OK<CR><LF>
```


➤ Parameters:

- ◆ time: short connection time: 0, 60-65535s, less than 60s:disable

E.g. : AT+ RSTIM =3600

37. AT+UARTCLBUF

➤ Function: setting/query module clear serial port buffer

➤ Format:

- ◆ query :

```
AT+ UARTCLBUF <CR>
```

```
<CR><LF>+OK=<sta><CR><LF>
```

- ◆ setting :

```
AT+ UARTCLBUF =<sta><CR>
```

```
<CR><LF>+OK<CR><LF>
```

➤ Parameters:

- ◆ sta
- ◆ ON:clear
- ◆ OFF:disable this function

E.g.: AT+ UARTCLBUF =ON

38. AT+SOCKTONN

➤ (N: the number of the port, 1~8. for single port socket, ignore the N)

➤ Function: setting/query reconnect time

➤ Format:

- ◆ query :

AT+ SOCKTONN <CR>

<CR><LF>+OK=<time><CR><LF>

- ◆ setting :

AT+ SOCKTONN =<time><CR>

<CR><LF>+OK<CR><LF>

- Parameters:

- ◆ time: timeout reconnection time: 1~99999s, default: 86400s

E.g. :AT+ SOCKTONN =86400

39. AT+MODTCPN

- (N: the number of the port, 1~8. for single port socket, ignore the N)
- Function: query /setting Modbus TCP function
- Format:

- ◆ query :

AT+ MODTCPN <CR>

<CR><LF>+OK=<sta><CR><LF>

- ◆ setting :

AT+ MODTCPN =<sta><CR>

<CR><LF>+OK<CR><LF>

- Parameters:

- ◆ sta:
- ◆ ON: enable modbus TCP
- ◆ OFF: disable modbus TCP

E.g.: AT+ MODTCP1 =ON

40. AT+MODPOLLN

- (N: the number of the port, 1~8. for single port socket, ignore the N)

- Function: query /setting Modbus polling

- Format:

- ◆ query :

```
AT+ MODPOLLN <CR>
```

```
<CR><LF>+OK=<sta><CR><LF>
```

- ◆ setting :

```
AT+ MODPOLLN =<sta><CR>
```

```
<CR><LF>+OK<CR><LF>
```

- Parameters:

- ◆ sta

- ◆ ON: enable Modbus polling

- ◆ OFF: disable Modbus polling

E.g. : AT+ MODPOLL1 =ON

41. AT+MODTON

- (N: the number of the port, 1~8. for single port socket, ignore the N)

- Function: query /setting Modbus polling time

- Format:

- ◆ query :

AT+ MODTON <CR>

<CR><LF>+OK=<time><CR><LF>

- ◆ setting :

AT+ MODTON =<time><CR>

<CR><LF>+OK<CR><LF>

- Parameters:

- ◆ time: modbus polling time: 200~9999s, default: 200s

E.g.: AT+ MODTO1=200

42. AT+NETPRN

- (N: the number of the port, 1~8. for single port socket, ignore the N)

- Function: query /setting net printing function

- Format:

- ◆ query :

AT+ NETPRN <CR>

<CR><LF>+OK=<sta><CR><LF>

- ◆ setting :

AT+ NETPRN =<sta><CR>

<CR><LF>+OK<CR><LF>

- Parameters:

- ◆ sta
- ◆ ON: enable net printing
- ◆ OFF: disable net printing

E.g. : AT+ NETPR1=ON

43. AT+UDPONN

- (N: the number of the port, 1~8. for single port socket, ignore the N)
- Function: query /setting UDP do not detect the remote IP and port
- Format:

- ◆ query :

```
AT+ UDPONN <CR>
<CR><LF>+OK=<sta><CR><LF>
```

- ◆ setting :

```
AT+ UDPONN =<sta><CR>
<CR><LF>+OK<CR><LF>
```

- Parameters:

- ◆ Sta
- ◆ ON: enable do not detect the remote IP and port under UDP mode
- ◆ OFF: disable do not detect the remote IP and port under UDP mode

E.g. : AT+ UDPO1=ON

44. AT+CFGTF

- Function: setting to save the current parameter into default parameter
- Format:
- ◆ setting :

AT+ CFGTF <CR>

<CR><LF>+OK=<sta><CR><LF>

➤ Parameters:

- ◆ Sta: saved: have saved the parameters

E.g. : AT+ CFGTF

45. AT+PINGN

➤ Function: setting ping the remote IP and have a ping.

➤ Format:

- ◆ setting :

AT+ PINGN =<ip><CR>

<CR><LF>+OK<CR><LF>

➤ Parameters:

- ◆ ip: remote IP or domain name, at most for 30 bytes.

E.g.: AT+PING1=www.baidu.com.

46. AT+HEARTUSERN

➤ Function: query /setting the defined heartbeat package of the port N, supports ASCII and HEX

➤ Format:

- ◆ query :

AT+ HEARTUSERN <CR>

<CR><LF>+OK=< data,type ><CR><LF>

- ◆ setting :

AT+ HEARTUSERN =< data,type ><CR>

<CR><LF>+OK<CR><LF>

➤ Parameters:

- ◆ data: content of the defined heartbeat package , ASCII can be 40 bytes and HEX can be 80 bytes at most
- ◆ type: heartbeat package content enter format: ASCII or HEX

E.g.: AT+ HEARTUSERN = 01020305,HEX

47. AT+REGUSERN

➤ Function: query /setting the defined registration package of the port N, supports ASCII and HEX

➤ Format:

- ◆ query :

AT+ REGUSERN <CR>

<CR><LF>+OK=< data,type ><CR><LF>

- ◆ setting :

AT+ REGUSERN =< data,type ><CR>

<CR><LF>+OK<CR><LF>

➤ Parameters:

- ◆ data: defined registration package content,ASCII can be 40 bytes and HEX can be 80 bytes at most
- ◆ type: registration package content enter format: ASCII or HEX

E.g. :AT+ REGUSERN = 01020305,HEX

6. Contact us

Company: Jinan USR IOT Technology Co., Ltd

Address: Floor 11,Building1,No.1166 Xinluo Street,Gaoxin Distric,Jinan,Shandong,250101 China

Tel: 86-531-55507297 86-531-88826739-803

Web: <http://www.usriot.com/>

Skype: lisausr

Support: <http://h.usriot.com/index.php?c=frontTicket&m=sign>

Email: sales@usr.cn tec@usr.cn

7. Disclaimer

The document provides information about USR-TCP232-E2 module, it doesn't grant any license to the intellectual property rights. Except the responsibility declared in the product sale clause, USR does not assure any other responsibilities. In addition, USR does not make any warranties for the sale and use of this product, including the suitability of products for a particular purpose, merchant ability or fitness for any patent, copyright or other intellectual property infringement. USR may make changes to specifications and products description without notice.

8. Modified History

vision	Modify instr	Time
V1.0.1	The first one	2016-11-21
V1.1.1	Add AT command, restart timeout and short time connection	2017-05-03
V1.1.2	Upgrade the picture, add hardware watchdog	2019-05-20
V1.1.3	Add RS485 control pin	2015-05-31